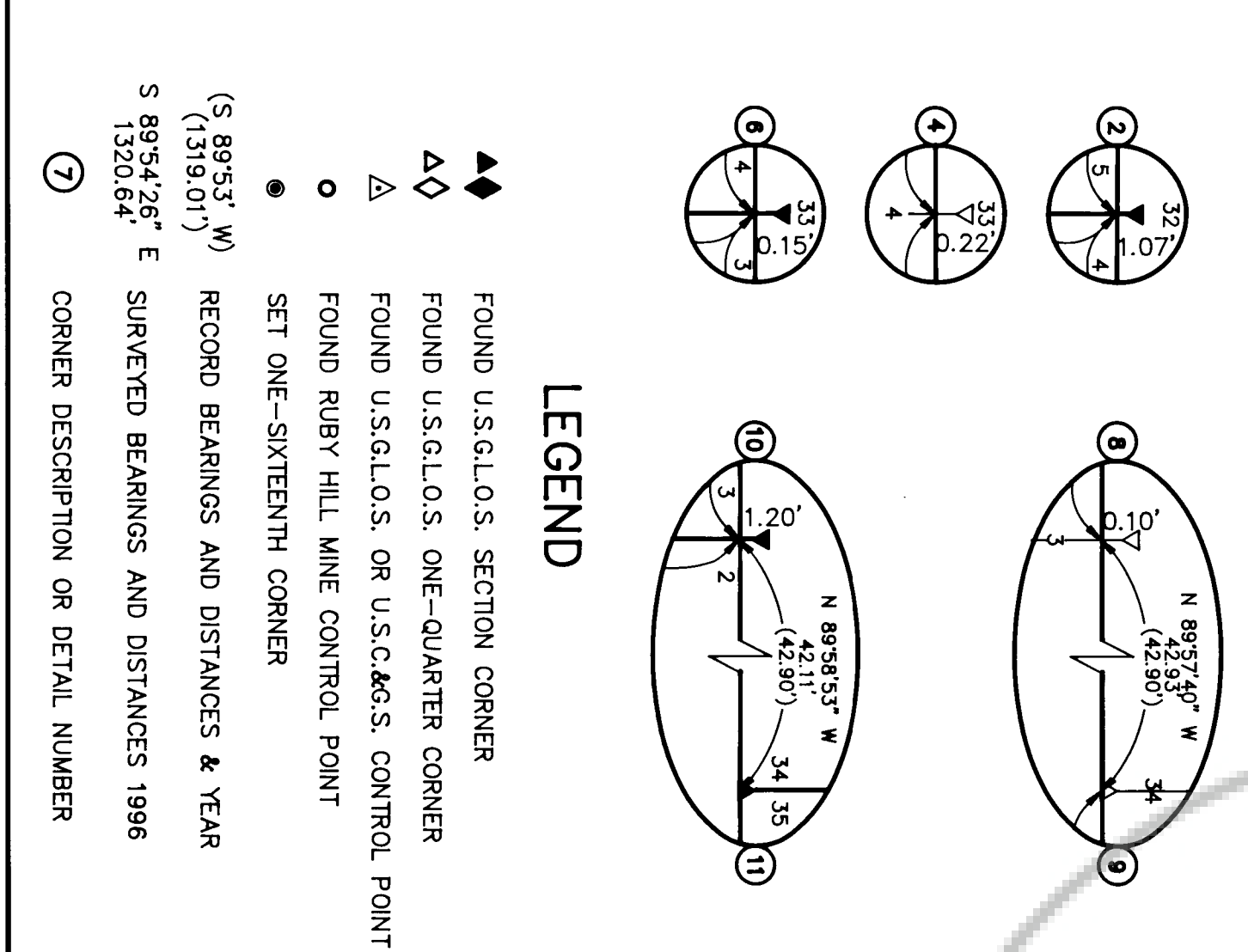


- 1 STANDARD 1/4 SECTION CORNER S.1/4 SEC. 32
FD 2-1/2 in. dia. U.S.G.L.O.S. BRASS CAP DATED 1933.
0.5 FT ABOVE GROUND IN GOOD CONDITION.
NEXT TO A WOODEN POST 6 in. dia. BY 1 FT HIGH.
- 2 CLOSING SECTION CORNER SEC. 4 & SEC. 5
FD 2-1/2 in. dia. U.S.G.L.O.S. BRASS CAP MARKED 1937 & "CC".
0.5 FT ABOVE GROUND IN GOOD CONDITION.
A ROCK MOUND 3 FT dia. BY 1 FT HIGH.
BEARS SOUTH 1.5 FT TO THE CENTER.
- 3 STANDARD SECTION CORNER SEC. 32 & SEC. 33
FD 2-1/2 in. dia. U.S.G.L.O.S. BRASS CAP DATED 1927.
0.8 FT ABOVE GROUND IN GOOD CONDITION.
A ROCK MOUND 3 FT dia. BY 1 FT HIGH.
BEARS NORTH 1.5 FT TO CENTER.
ALSO A 5 FT STEEL FENCE POST ALONG SIDE.
- 4 CLOSING 1/4 SECTION CORNER N.1/4 SEC. 4
FD 2-1/2 in. dia. U.S.G.L.O.S. BRASS CAP DATED 1937.
0.7 FT ABOVE GROUND IN GOOD CONDITION.
A ROCK MOUND 3 FT dia. BY 1.5 FT HIGH.
BEARS SOUTH 1.5 FT TO CENTER.
- 5 STANDARD 1/4 SECTION CORNER S.1/4 SEC. 33
FD 2-1/2 in. dia. U.S.G.L.O.S. BRASS CAP DATED 1927.
0.7 FT ABOVE GROUND IN GOOD CONDITION.
A ROCK MOUND 3 FT dia. BY 0.5 FT HIGH.
IN A ROCK MOUND 5 FT TO CENTER.
- 6 CLOSING SECTION CORNER SEC. 4 & SEC. 3
FD 2-1/2 in. dia. U.S.G.L.O.S. BRASS CAP MARKED 1937 & "CC".
0.8 FT ABOVE GROUND IN GOOD CONDITION.
IN A ROCK MOUND 3 FT dia. BY 1 FT HIGH.
- 7 STANDARD SECTION CORNER SEC. 33 & SEC. 34
FD 2-1/2 in. dia. U.S.G.L.O.S. BRASS CAP DATED 1927.
1.0 FT ABOVE GROUND IN GOOD CONDITION.
A ROCK MOUND 3 FT dia. BY 1 FT HIGH.
BEARS NORTH 2.5 FT TO THE CENTER.
- 8 CLOSING 1/4 SECTION CORNER N.1/4 SEC. 3
FD 2-1/2 in. dia. U.S.G.L.O.S. BRASS CAP DATED 1937.
0.8 FT ABOVE GROUND IN GOOD CONDITION.
- 9 STANDARD 1/4 SECTION CORNER S.1/4 SEC. 34
FD 2-1/2 in. dia. U.S.G.L.O.S. BRASS CAP DATED 1927.
0.8 FT ABOVE GROUND IN GOOD CONDITION.
- 10 CLOSING SECTION CORNER SEC. 3 & SEC. 2
FD 2-1/2 in. dia. U.S.G.L.O.S. BRASS CAP MARKED 1935 & "CC".
A ROCK MOUND 4 FT dia. BY 0.8 FT HIGH.
BEARS SOUTH 2 FT TO THE CENTER.
ALSO A 5 FT STEEL FENCE POST ALONG SIDE.
- 11 STANDARD SECTION CORNER SEC. 34 & SEC. 35
FD 2-1/2 in. dia. U.S.G.L.O.S. BRASS CAP DATED 1927.
0.7 FT ABOVE GROUND IN GOOD CONDITION.
IN A ROCK MOUND 3 FT dia. BY 0.5 FT HIGH.
ALSO A ROCK MOUND 4 FT dia. BY 0.5 FT HIGH
5 FT STEEL FENCE POST ALONG SIDE.
- 12 SECTION CORNER SECTIONS 4-5-8-9
FD 2-1/2 in. dia. U.S.G.L.O.S. BRASS CAP DATED 1937.
0.5 FT ABOVE GROUND IN GOOD CONDITION.
A ROCK MOUND 3 FT dia. BY 1 FT HIGH
BEARS WEST 2 FT TO CENTER.
- 13 1/4 SECTION CORNER SECTIONS 4 & 9
FD 2-1/2 in. dia. U.S.G.L.O.S. BRASS CAP DATED 1937.
BEARING ON THE GROUND MARKS A ROCK MOUND
BEARING ON THE GROUND MARKS A ROCK MOUND
MIDPOINT OF THE NORTH LINE OF SECTION 9
A ROCK MOUND 2 FT dia. BY 1 FT HIGH WAS CONSTRUCTED
AROUND THE RESET U.S.G.L.O.S. BRASS CAP.
- 14 SECTION CORNER SECTIONS 3-4-9-10
FD 2-1/2 in. dia. U.S.G.L.O.S. BRASS CAP DATED 1937.
0.4 FT ABOVE GROUND IN GOOD CONDITION.
A ROCK MOUND 3 FT dia. BY 1 FT HIGH
BEARS NORTH OF THE BRASS CAP.
- 15 1/4 SECTION CORNER SECTIONS 3 & 10
FD 2-1/2 in. dia. U.S.G.L.O.S. BRASS CAP DATED 1937.
0.7 FT ABOVE GROUND IN GOOD CONDITION.
IN A SMALL ROCK MOUND OF THREE STONES.
- 16 SECTION CORNER SECTIONS 2-3-10-11
FD 2-1/2 in. dia. U.S.G.L.O.S. BRASS CAP
DATED 1935 AND 1989.
0.6 FT ABOVE GROUND IN GOOD CONDITION.
A ROCK MOUND 3 FT dia. BY 1 FT HIGH
BEARS WEST 1.5 FT TO THE CENTER.
- 17 1/4 SECTION CORNER SECTIONS 8 & 9
FD 2-1/2 in. dia. U.S.G.L.O.S. BRASS CAP DATED 1937.
0.6 FT ABOVE GROUND IN GOOD CONDITION.
A ROCK MOUND 3 FT dia. BY 1 FT HIGH
BEARS WEST 1.5 FT TO THE CENTER.
- 18 1/4 SECTION CORNER SECTIONS 9 & 10
FD 2-1/2 in. dia. U.S.G.L.O.S. BRASS CAP DATED 1937.
0.6 FT ABOVE GROUND IN GOOD CONDITION.
A ROCK MOUND 2 FT dia. BY 1 FT HIGH
BEARS WEST 3 FT TO THE CENTER.
- 19 1/4 SECTION CORNER SECTIONS 10 & 11
FD 2-1/2 in. dia. U.S.G.L.O.S. BRASS CAP
DATED 1935 AND 1989.
1.0 FT ABOVE GROUND IN GOOD CONDITION.
IN A ROCK MOUND 5 FT dia. BY 1 FT HIGH
AND A "T" POST ALONG SIDE.
- 20 SECTION CORNER SECTIONS 9-9-16-17
FD 2-1/2 in. dia. U.S.G.L.O.S. BRASS CAP DATED 1937.
A ROCK MOUND 3 FT dia. BY 1 FT HIGH
BEARS WEST 1.5 FT TO CENTER.
- 21 1/4 SECTION CORNER SECTIONS 9 & 16
FD 2-1/2 in. dia. U.S.G.L.O.S. BRASS CAP DATED 1937.
0.7 FT ABOVE GROUND IN GOOD CONDITION.
A ROCK MOUND 3 FT dia. BY 1 FT HIGH
BEARS NORTH 3 FT TO CENTER.
- 22 SECTION CORNER SECTIONS 9-10-15-18
FD 2-1/2 in. dia. U.S.G.L.O.S. BRASS CAP DATED 1937.
0.9 FT ABOVE GROUND IN GOOD CONDITION.
WHICH IS 3/4 IN. DIA. RUBY HILL PIPE 3 FT EAST.
- 23 1/4 SECTION CORNER SECTIONS 10 & 15
FD 2-1/2 in. dia. U.S.G.L.O.S. BRASS CAP DATED 1937.
2.8 FT ABOVE GROUND LEANING, STRAIGHTENED
THE MONUMENT UP AND RE-MOUNDED THE ROCKS
OF A MOUND 6 FT dia. BY 1 FT HIGH.
- 24 SECTION CORNER SECTIONS 10-11-14-15
FD 2-1/2 in. dia. U.S.G.L.O.S. BRASS CAP
DATED 1935 AND 1989.
A ROCK MOUND 5 FT dia. BY 1 FT HIGH.
IN A ROCK MOUND 5 FT dia. BY 1 FT HIGH.
- 25 1/4 SECTION CORNER SECTIONS 11 & 14
FD 2-1/2 in. dia. U.S.G.L.O.S. BRASS CAP
DATED 1935 AND 1989.
1.5 FT ABOVE GROUND IN GOOD CONDITION.
IN A ROCK MOUND 4.5 FT dia. BY 1 FT HIGH.
ALSO A 5 FT STEEL FENCE POST ALONG SIDE.
- 26 1/4 SECTION CORNER SECTIONS 15 & 16
FD 2-1/2 in. dia. U.S.G.L.O.S. BRASS CAP DATED 1937.
IN GOOD CONDITION.
IN A ROCK MOUND 5 FT dia. BY 3 FT HIGH.
- 27 1/4 SECTION CORNER SECTIONS 14 & 15
FD 2-1/2 in. dia. U.S.G.L.O.S. BRASS CAP DATED 1935
0.8 FT ABOVE GROUND IN GOOD CONDITION.
A ROCK MOUND 4 FT dia. BY 1 FT HIGH
BEARS WEST 2.5 FT TO THE CENTER.
- 28 W. 1/8 CORNER OF SECTIONS 11 & 14
SET 3/4 IN. DIA. U.S.G.L.O.S. BRASS CAP ON 1/4 IN. DIA.
REBAR WITH AN "X" CUT IN THE TOP OF THE
REBAR AND AN ALUMINUM TAG WIRE TO THE
CAP MKD: FRONTIER SURVEYING INC.
WILLIAM F. MUELLER
PLS 3535
- 29 TAG MKD: W 1/6 1/4
FSI 12/20/96
SET A 5 FT STEEL FENCE POST 1 FT WEST.
- 30 U.S.C.G.S. STATION "TANK" G.L.O.P.
FD 2-1/2 in. dia. U.S.G.L.O.S. BRASS CAP DATED 1937.
0.9 FT ABOVE GROUND IN GOOD CONDITION.
DESIGNATED "TSC-G" (LOCALLY KNOWN AS "BULLWACKER")
N 117829.85 E 8723.97 ELEV. 6525.81 (R.H.M.C.G.)
- 31 U.S.C.G.S. STATION "TANK"
FD 3-1/2 in. dia. U.S.C.G.S. BRASS CAP DATED 1988
AND 1954. 0.5 FT ABOVE GROUND IN GOOD CONDITION.
SET IN ROCK. E 16412.40 ELEV. 6658.35 (R.H.M.C.G.)
N 113541.10 E 16412.40 ELEV. 6658.35 (R.H.M.C.G.)
- 32 R.H.M.C.G. POINT "CARBON HILL NORTH"
FD 5/8 in. dia. SPIKE 0.1 FT ABOVE GROUND
IN A ROCK OUTCROP.
(RUBY HILL MINE CONTROL POINT)
N 113557.55 E 12627.25 ELEV. 6795.71 (R.H.M.C.G.)



- LEGEND**
- ◆ FOUND U.S.G.L.O.S. SECTION CORNER
 - ▲ FOUND U.S.G.L.O.S. ONE-QUARTER CORNER
 - △ FOUND U.S.G.L.O.S. OR U.S.C.G.S. CONTROL POINT
 - FOUND RUBY HILL MINE CONTROL POINT
 - SET ONE-SIXTEENTH CORNER
 - (S 8935' W) RECORD BEARINGS AND DISTANCES & YEAR (1319.01)
 - (S 8954' 26" E) SURVEYED BEARINGS AND DISTANCES 1996 1320.64
 - (7) CORNER DESCRIPTION OR DETAIL NUMBER

NOTES

1. U.S.G.L.O.S. = UNITED STATES GENERAL LAND OFFICE SURVEY
2. U.S.C.G.S. = UNITED STATES COAST & GEODETIC SURVEY
3. ALL U.S.G.L.O.S. MONUMENTS WERE APPROPRIATELY STAMPED.
4. A 5 FT STEEL FENCE POST WAS SET AT EACH U.S.G.L.O.S. MONUMENT UNLESS OTHERWISE NOTED AS FOUND.
5. R.H.M.C.G. = RUBY HILL MINING COORDINATE GRID

SURVEY REFERENCES

1. T. 20 N., R. 53 E., M.D.M. WAS RESURVEYED BY INDEPENDENT AND DEPENDENT METHODS BY A NELSON AND G.W. RIDGWAY FROM 1927 TO 1933. THE SURVEY WAS ACCEPTED JUNE 18, 1935. THE FIELD NOTES AND PLAT OF THIS SURVEY WERE USED TO RETRACE THE STANDARD CORNERS ON THE SOUTH BOUNDARY.
2. T. 19 N., R. 53 E., M.D.M. WAS RESURVEYED BY EMIL VOGT, THEODORE DEBAMOND, AND CARL SWANHOLM BEGINNING IN APRIL 1935 AND COMPLETING IN 1937. THE SURVEY WAS FINALLY ACCEPTED ON MAY 13, 1938. THE FIELD NOTES AND PLATS OF THIS SURVEY WERE USED TO RETRACE SECTIONS 3, 4, 9, 10, 15&16.
3. SECTION 11, T. 19 N., R. 53 E., M.D.M. WAS DEPENDENTLY RESURVEYED BY NEL FORSTH IN MAY, 1989. THE SURVEY WAS ACCEPTED JANUARY 26, 1990. THE FIELD NOTES AND PLAT OF THIS SURVEY WERE USED TO RETRACE THE WEST AND SOUTH LINES OF SECTION 11.
4. MINERAL SURVEY NUMBER 5125 WAS CONDUCTED IN 1994 BY WILLIAM F. MUELLER AND APPROVED JUNE 24, 1996. THE SURVEY CONSISTED OF 26 LODGE CLAIMS SITUATED IN SECTIONS 10, 11, 14 AND 15. THE PLAT OF THIS SURVEY IS RECORDED AT FILE NUMBER 165933 OF THE OFFICIAL RECORDS OF EUREKA COUNTY, NEVADA. THE FIELD NOTES AND PLAT OF THIS MINERAL SURVEY WERE USED TO RETRACE THE SECTION LINES STATED ABOVE.

SURVEYOR'S CERTIFICATE:

I, William F. Mueller, Nevada Professional Land Surveyor No. 3535, do hereby certify that this map is an accurate representation of a survey performed under the supervision of a duly licensed and qualified land surveyor in California. The purpose of this survey is to provide a retracement of the existing land corners that may be destroyed by future mining activity and provide a basis for the restoration of any destroyed corner within this survey. I do certify that the monuments are of the character and occupy the positions indicated and are sufficient to retrace the survey.

WILLIAM F. MUELLER
PROFESSIONAL LAND SURVEYOR
NO. 3535

Filed at the request of
Wendy Marie Shynard
Date *Jan 15, 1997*
Time *2:06 P.M.*

M. N. Retzlaff
Eureka County Recorder
DRAWING PREPARATION
DATE 1/17/96

RECORD OF SURVEY
OF
SECTIONS 3, 4, 9, & 10 and
PORTIONS OF SECTIONS 14 & 15,
T. 19 N., R. 53 E., M.D.M.
FOR
FRONTIER SURVEYING, INC.
96030

293 Third Street
Eureka, Nevada 89501
Phone (702) 798-7970