

R 52 EAST

R 53 EAST

15

14

18



22

24

Lode Claims

1" = 500'

• Boundary Monuments

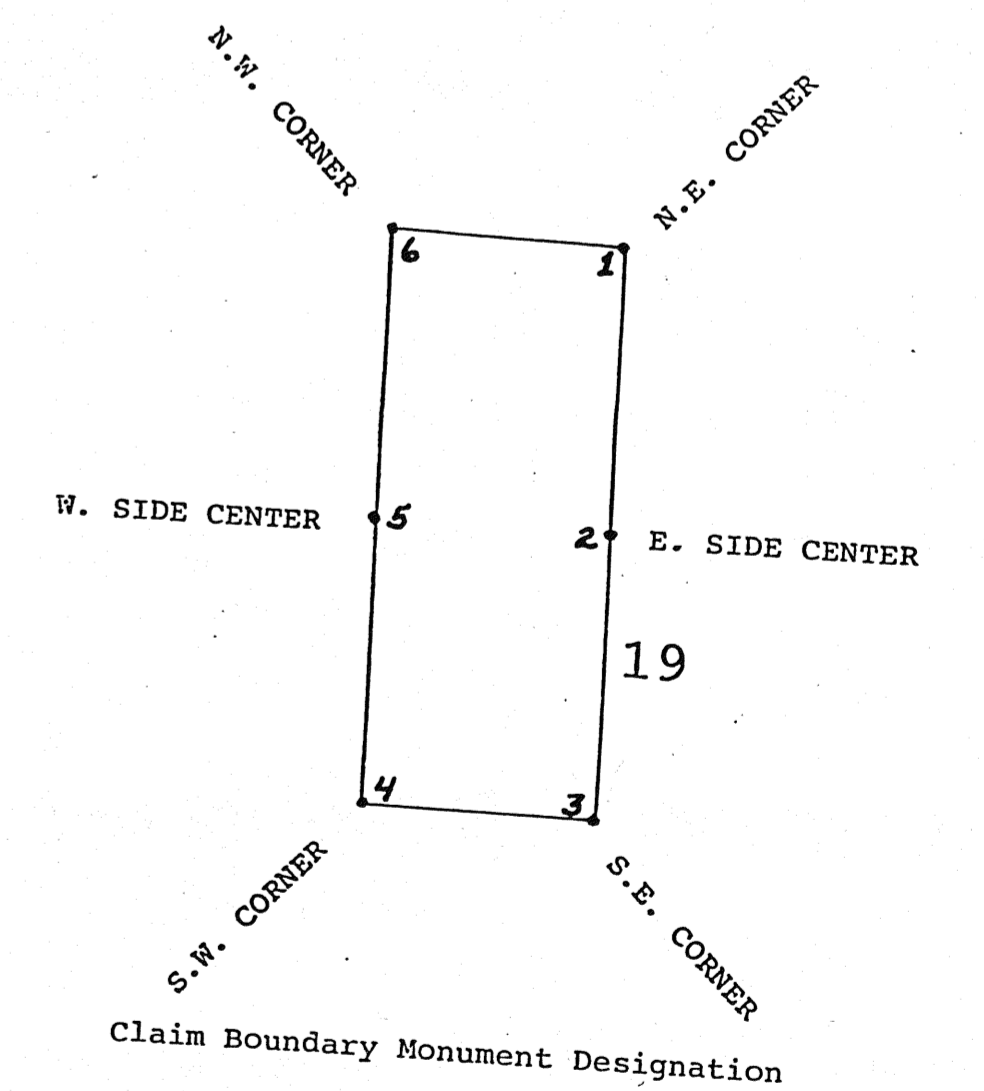
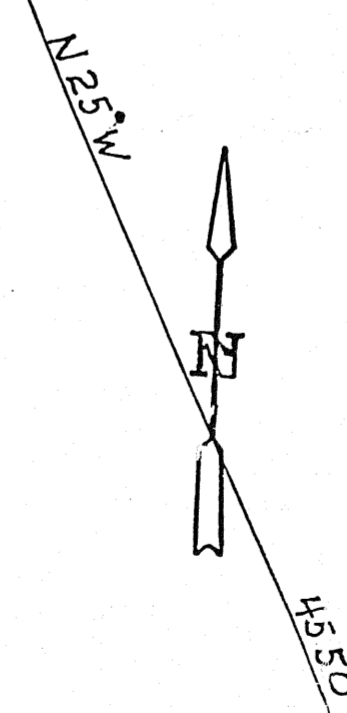
WESTERN CHEMICALS INC.
335 N. WILMOT ROAD, SUITE 400
TUCSON, ARIZONA 85711

AMENDS MAP #165773

WESTERN CHEMICALS INCORPORATED
UNKNOWN MINING DISTRICT
EUREKA COUNTY NEVADA

TOWNSHIP 18 NORTH RANGES 52 & 53
EAST

M.D.B. & M



All Monuments Are
4" x 4" Wooden Post
4' Long

SURVEYED SECTION CORNER

Amended
 FILED AT THE REQUEST OF *Western Chemicals Inc.*
 on 1/21 1997 at 5:11 p.m., past 2 P.M.
 RECORDS OF EUREKA COUNTY, NEVADA M. N. REBALEATI, Recorder
 File No. 165910 Fee \$ 7.00