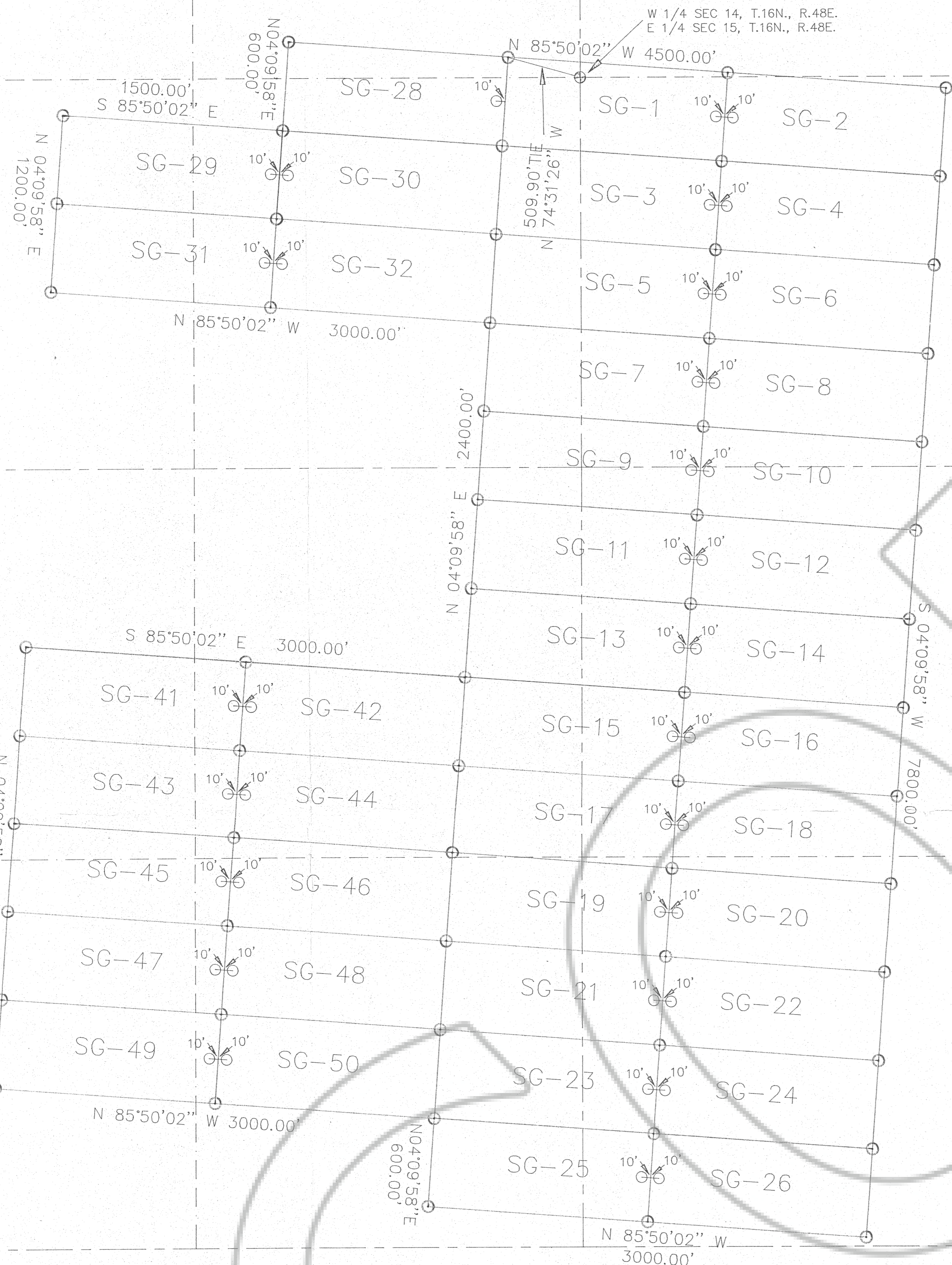


SEC 15

SEC 22

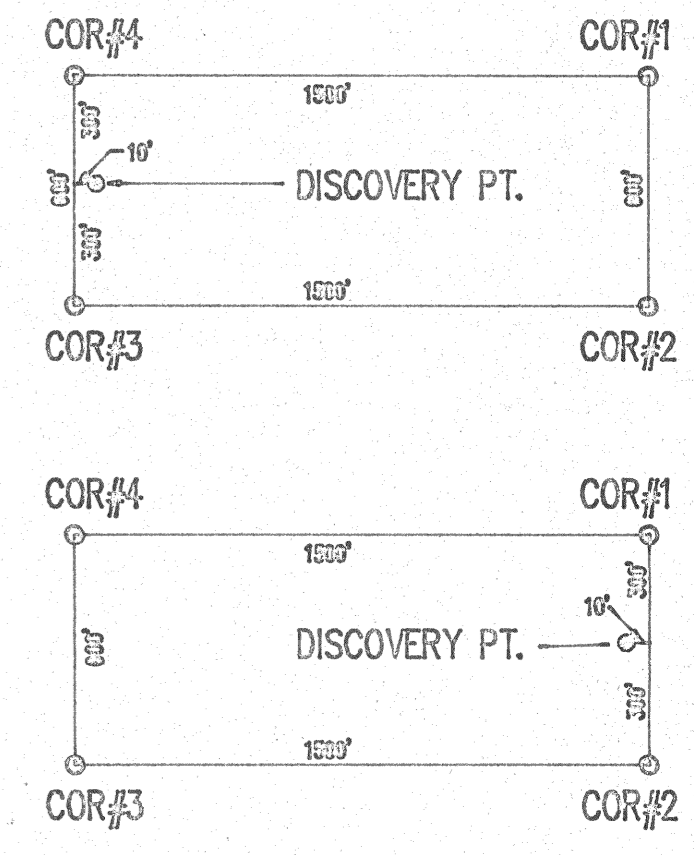
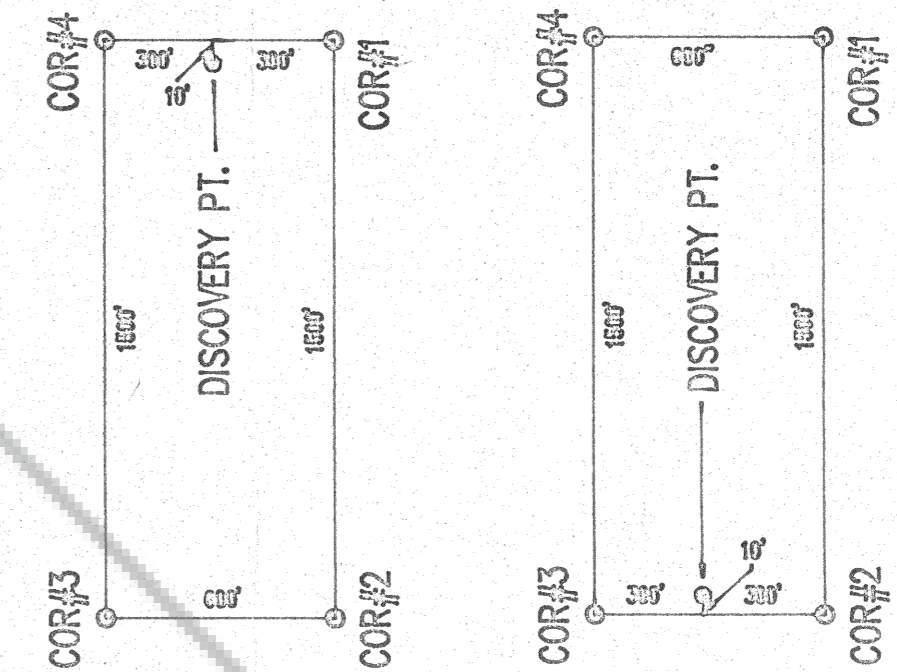
SEC 14

SEC 23



166148

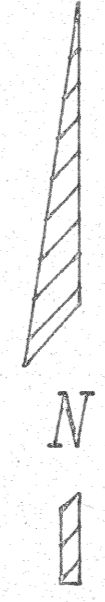
TYPICAL DETAIL



THE DISCOVERY POINTS FOR CLAIMS WERE SET AS FOLLOWS:

12-11-96	SG-1 THRU SG-8
12-12-96	SG-9 THRU SG-14
12-13-96	SG-15 THRU SG-24
12-17-96	SG-20 THRU SG-32
01-08-97	SG-41 THRU SG-42
01-09-97	SG-43 THRU SG-50
01-26-97	SG-25 THRU SG-26

SCALE: 1"=500'



CLD SURVEYING

WATER RIGHTS & LAND

P. O. BOX 7316
INCLINE VILLAGE, NEVADA 89452

CONN DAVIS, Surveyor

Phone 1-702-831-7539

LAND SURVEYOR'S CERTIFICATE

I, CONN DAVIS, DO HEREBY CERTIFY THAT THIS IS A TRUE AND ACCURATE MAP OF THE LAND SURVEYED UNDER MY SUPERVISION AND DIRECTION ON THE 5th DAY OF FEB., 1997, AND THAT SAID SURVEY IS FULLY AND CORRECTLY DESIGNATED HEREON, AND THAT THE MONUMENTS ARE OF THE CHARACTER AND OCCUPY THE POSITIONS INDICATED HEREON AND ARE SUFFICIENT TO ENABLE THIS SURVEY TO BE RETRACED.

Conn Davis
R.L.S. NO. 7880 (CONN DAVIS)

LEGEND

- ⊕ SECTION CORNERS FOUND
- 2"X2"X4' MINING CLAIM POST WITH ALUMINUM TAG

NOTE: THE BASE OF BEARING IS THE EAST LINE OF THE CLAIMS, BEING S04°09'58"W, DETERMINED BY A SOLAR OBSERVATION MADE ON DEC. 13, 1996.

2. ALL CLAIMS ARE 1500'X600' SURFACE SIZE.

FILING DATA \$615.00
FILE NO. 166148

FILED AT THE REQUEST OF GRANGES (US) INC.

DATE 2/10/97

TIME 9:25 AM

M. N. Rebaleati
ELUREKA COUNTY RECORDER
Eravene Stannett, Deputy

LODE MINING CLAIMS
SG-1 THRU SG-26, SG-28 THRU SG-32, AND
SG-41 THRU SG-50

FOR
GRANGES (US) INC.
350 ROCK BLVD., SUITE E
RENO, NEVADA 89502

LOCATED IN
SEC. 14, 15, 22, & 23, T.16N., R.48E., M.D.B.&M.,
EUREKA COUNTY, NEVADA

DRAWN BY CONN

DATE 2-04-97

EAGLE POINT (GRANG967)