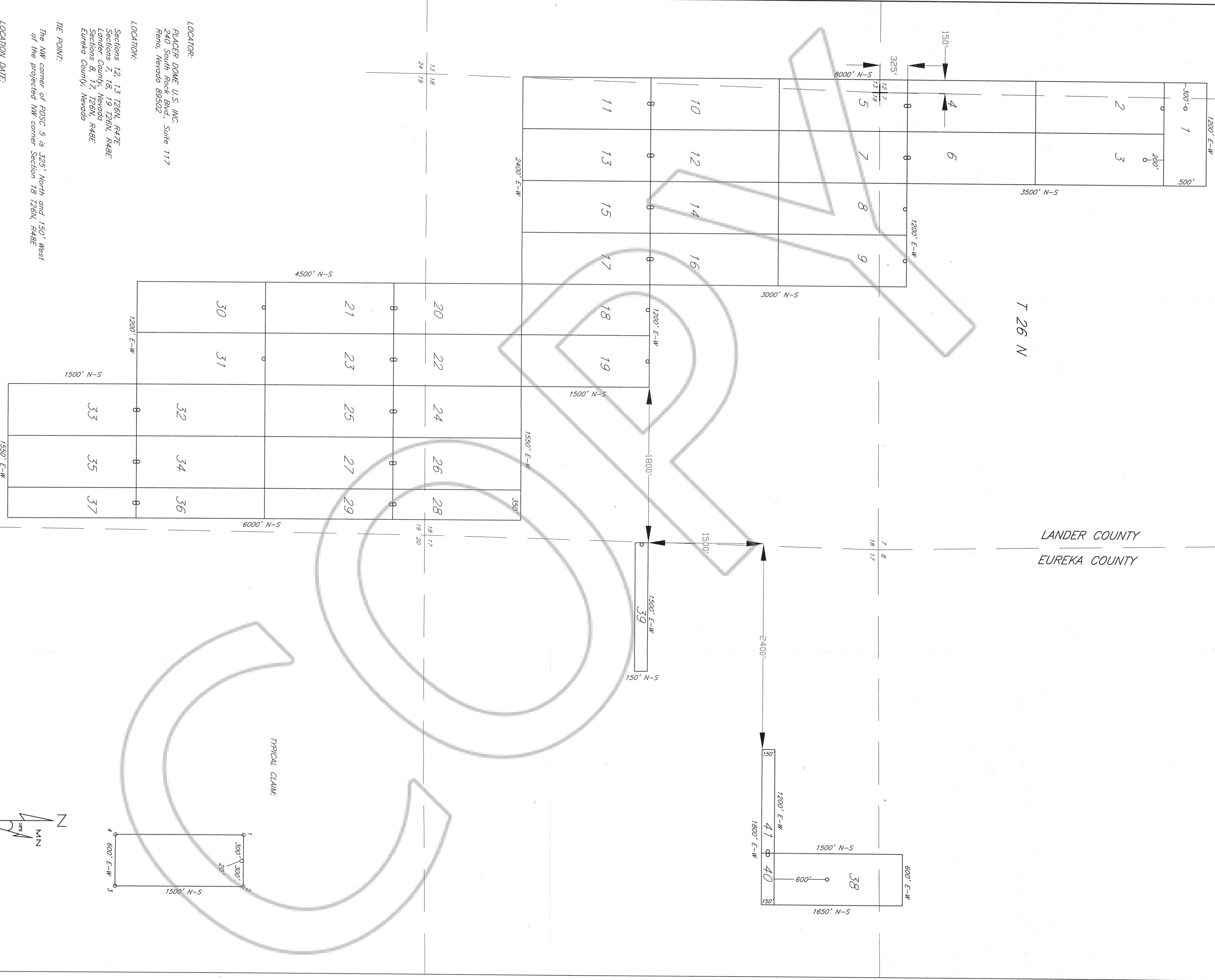
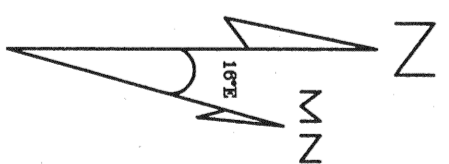
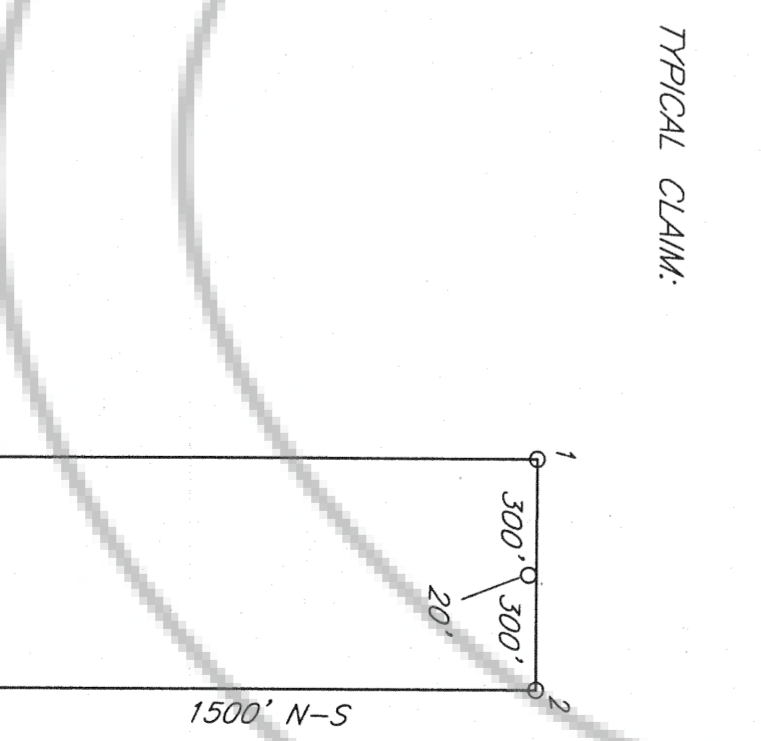


R 47 E
R 48 E



LANDER COUNTY
EUREKA COUNTY



Magnetic Declination 16°E

LOCATOR:
PLACER DOME U.S. INC.
240 South Rock Blvd., Suite 117
Reno, Nevada 89502

LOCATION:
Sections 12, 13 T26N, R47E
Sections 1, 18, 19 T26N, R48E
Lander County, Nevada
Sections 8, 17, 126N, R48E
Eureka County, Nevada

THE POINT:
The NW corner of PDSC 5 is 325' North and 150' West
of the projected NW corner Section 18 T26N, R48E

LOCATION DATE:
12-11-96 PDSC 10-37
12-13-96 PDSC 1-9, 38-41

NOTES:
All monuments are 1.5"x1.5"x4' long wooden
post with scribed metal tags.
All claims are 1500' x 600' with location
monuments 20' in from end line, except:
PDSC 1 is 1200'x500' with LM 300' in from
PDSC 3 LM is 200' in from North end
PDSC 28, 29, 36 & 37 are 1500'x350'
PDSC 38 LM is 600' from South end center
PDSC 39 is 1500'x150'
PDSC 40 is 600'x150'
PDSC 41 is 1200'x150'

FILED AT THE REQUEST OF Placer Dome U.S. Inc.
on Dec 19 1996 at 5:22 pm, past L.P.M.
RECORDS OF EUREKA COUNTY, NEVADA. H.L. REEBLENT, Recorder
File No. 166154 Fee \$ 100.00

PDSC 1-41	
LODE MINING CLAIMS	
Scale: 1"=500'	Located: 12-11&13-96
December 23, 1996	Completed: 12-13-96
By:	Drawn By: GH
PACIFIC RIM EXPLORATION INC.	
Map 1 of 1	