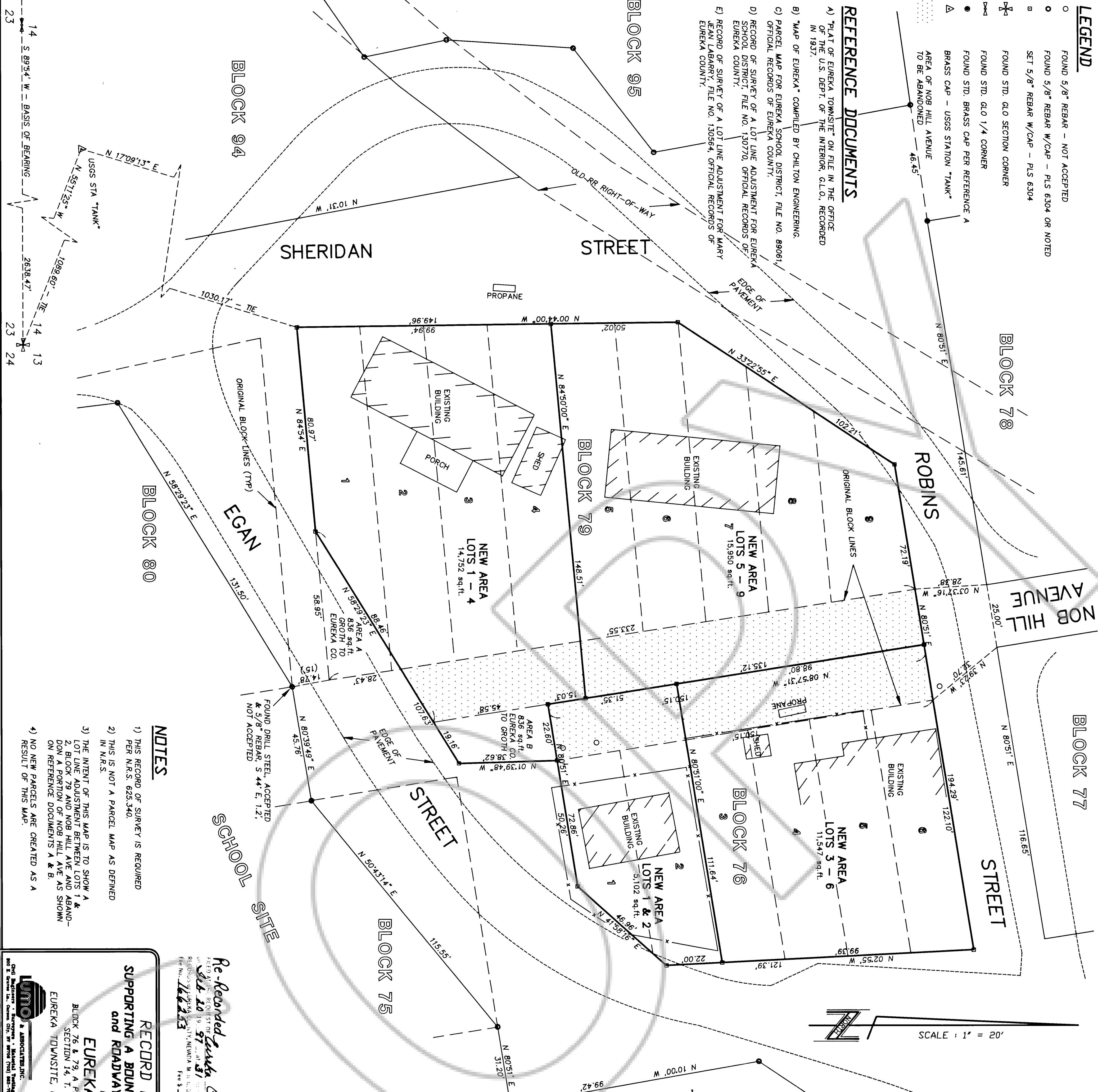


LEGEND

- FOUND 5/8" REBAR - NOT ACCEPTED
- FOUND 5/8" REBAR W/CAP - PLUS 6304 OR NOTED
- SET 5/8" REBAR W/CAP - PLUS 6304
- ✱ FOUND STD. GLO SECTION CORNER
- ✱ FOUND STD. GLO 1/4 CORNER
- FOUND STD. BRASS CAP PER REFERENCE A
- ▲ BRASS CAP - USGS STATION "TANK"
- AREA OF NOB HILL AVENUE TO BE ABANDONED

REFERENCE DOCUMENTS

- A) "PLAT OF EUREKA TOWNSITE" ON FILE IN THE OFFICE OF THE U.S. DEPT. OF THE INTERIOR, G.L.O., RECORDED IN 1937.
- B) "MAP OF EUREKA" COMPILED BY CHILTON ENGINEERING.
- C) "PARCEL MAP FOR EUREKA SCHOOL DISTRICT, FILE NO. 89061"
- D) "RECORD OF SURVEY OF A LOT LINE ADJUSTMENT FOR EUREKA SCHOOL DISTRICT, FILE NO. 130770, OFFICIAL RECORDS OF EUREKA COUNTY."
- E) "RECORD OF SURVEY OF A LOT LINE ADJUSTMENT FOR MARY JEAN LABRARY, FILE NO. 130564, OFFICIAL RECORDS OF EUREKA COUNTY."



BLOCK 77

NOB HILL AVENUE

STREET

ROBINS

ORIGINAL BLOCK LINES

NEW AREA
LOTS 5 - 9
15,950 sq.ft.

BLOCK 76

NEW AREA
LOTS 3 - 6
11,547 sq.ft.

BLOCK 79

NEW AREA
LOTS 1 - 4
14,752 sq.ft.

STREET

BLOCK 75

EGAN

SCHOOL SITE

BLOCK 94

BLOCK 95

BLOCK 80

NOTES

- 1) THIS RECORD OF SURVEY IS REQUIRED PER N.R.S. 625.340.
- 2) THIS IS NOT A PARCEL MAP AS DEFINED IN N.R.S.
- 3) THE INTENT OF THIS MAP IS TO SHOW A LOT LINE ADJUSTMENT BETWEEN LOTS 1 & 2, BLOCK 79 AND NOB HILL AVE AND ABANDON A PORTION OF NOB HILL AVE AS SHOWN ON REFERENCE DOCUMENTS A & B.
- 4) NO NEW PARCELS ARE CREATED AS A RESULT OF THIS MAP.

OWNER'S CERTIFICATE

WE THE UNDERSIGNED OWNERS OF THE AFFECTED PARCELS AS SHOWN ON THIS PLAT DO HEREBY STATE:
1) WE HAVE EXAMINED THIS PLAT AND APPROVE AND AUTHORIZE ITS RECORDING.
2) ALL PROPERTY TAXES ON THE LAND FOR THE FISCAL YEAR HAVE BEEN PAID.
3) ANY LENDER WITH AN AMOUNT ACCOUNT FOR THE PAYMENT OF TAXES HAS BEEN NOTIFIED OF THE ADJUSTMENT OF THE BOUNDARY LINE OR THE TRANSFER OF LAND.

DAVID EDGAR GROTH
LOTS 1-4, BLOCK 79
EUREKA TOWNSITE
EUREKA COUNTY, NEVADA

CHAIKMAN, EUREKA COUNTY COMMISSION
LOT 2, BLOCK 55
EUREKA TOWNSITE
EUREKA COUNTY, NEVADA

ATTEST, EUREKA COUNTY CLERK

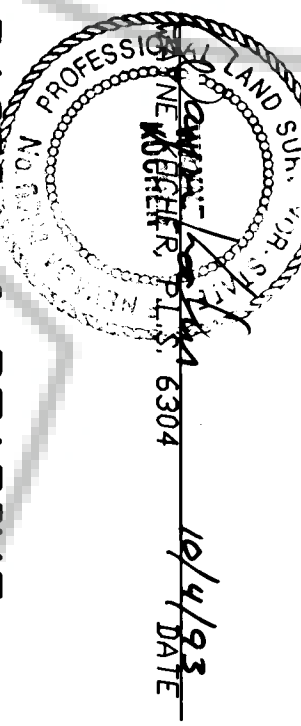
STATE OF NEVADA }
COUNTY OF EUREKA }
ON THIS 19th DAY OF February, 1994, DAVID EDGAR GROTH, DAVID EDGAR GROTH DID DEPOSE AND SAY THAT THEY EXECUTED THE FOREGOING CERTIFICATE FREELY AND VOLUNTARILY FOR THE USES AND PURPOSES STATED THEREIN.

NOTARY PUBLIC IN AND FOR THE STATE

BLOCK 58

SURVEYOR'S CERTIFICATE

- I, WAYNE KOEHLER, A PROFESSIONAL LAND SURVEYOR IN THE STATE OF NEVADA, DO HEREBY STATE THAT:
- 1) I HAVE PERFORMED A FIELD SURVEY OF THE BOUNDARIES OF THE AFFECTED PARCELS AT THE INSTANCE OF THE EUREKA COUNTY COMMISSIONERS.
 - 2) THE LANDS SURVEYED LIE WITHIN SECTION 14, TOWNSHIP 19 NORTH, RANGE 59 EAST, 12TH, AND THE SURVEY WAS COMPLETED ON JUNE 26, 1993.
 - 3) ALL CORNERS AND ANGLE POINTS OF THE ADJUSTED BOUNDARY HAVE BEEN SET.
 - 4) THE MONUMENTS ARE OF THE CHARACTER SHOWN AND OCCUPY THE POSITIONS INDICATED.
 - 5) THIS MAP IS NOT IN CONFLICT WITH THE PROVISIONS OF N.R.S. 278.010 TO 278.630, INCLUSIVE AND SECTIONS 2 AND 3 OF CHAPTER 479 OF THE SIXTY-SIXTH LEGISLATIVE SESSION.



BASIS OF BEARING
THE BASIS OF BEARING FOR THIS SURVEY IS THE NORTH LINE OF THE NORTHEAST 1/4 OF SECTION 23, T. 19 N., R. 53 E., MD.M., AS SHOWN ON REFERENCE DOCUMENTS A & B. THE BEARING OF SAID LINE BEING S 89°54' W.

GOVERNING AGENCY CERTIFICATE

EUREKA COUNTY HAS REVIEWED AND APPROVED THIS MAP AT THEIR MEETING HELD ON THE 19th DAY OF February 1994.

APPROVED BY: [Signature] CHAIRMAN, EUREKA COUNTY COMMISSION

ATTEST: EUREKA COUNTY CLERK

DATE: 2-20-92

RECORD OF SURVEY
SUPPORTING A BOUNDARY LINE ADJUSTMENT
AND ROADWAY ABANDONMENT

EUREKA COUNTY

FOR
BLOCK 76 & 79, A PORTION OF THE SE 1/4 OF SECTION 14, T. 19 N., R. 53 E., MD.M., EUREKA TOWNSITE, EUREKA COUNTY, NEVADA

DATE: JUNE 25, 1993
JOB NO. 2641-5
SHEET 1 OF 1

RECORDER'S CERTIFICATE

FILED AT THE REQUEST OF
EUREKA COUNTY COMMISSION

ON THE 24th DAY OF April, 1994
AT 3:00 MIN. PAST 11 A.M. IN THE
OFFICIAL RECORDS OF EUREKA COUNTY,
NEVADA.

FILE NUMBER: 152144
FEE: \$10 Fee