

OWNERS CERTIFICATE

KNOWN OF ALL MEN BY THESE PRESENTS THAT THE UNDERSIGNED, DAVID E. GROTH & SARA L. GROTH, BEING THE OWNERS OF THOSE PARCELS AS SHOWN ON THIS MAP, DO HEREBY CONSENT TO THE PREPARATION AND FILING OF THIS MAP AND OFFER FOR DEDICATION ALL OF THE STREETS AND EASEMENTS FOR PUBLIC ACCESS AND PUBLIC UTILITY PURPOSES AS DESIGNATED HEREON. IN WITNESS WE, THE OWNERS, SET OUR HANDS ON THE DATE SHOWN.

DATE 12-15-95 DAVID E. GROTH  
12-15-95 SARA L. GROTH  
SARA L. GROTH

STATE OF NEVADA }  
COUNTY OF EUREKA } SS

THIS INSTRUMENT WAS ACKNOWLEDGED BEFORE ME ON THE 15th DAY OF December, 1995, BY DAVID E. GROTH AND SARA L. GROTH.

NOTARY PUBLIC IN AND FOR EUREKA COUNTY, NEVADA  
DAVID E. GROTH  
SARA L. GROTH

SURVEYOR'S CERTIFICATE

I, ROBERT E. WORLEY, A PROFESSIONAL LAND SURVEYOR IN THE STATE OF NEVADA, CERTIFY THAT:  
1. THIS PLAT REPRESENTS THE RESULTS OF A SURVEY CONDUCTED UNDER MY DIRECT SUPERVISION AT THE INSTANCE OF DAVID E. GROTH AND SARA L. GROTH.  
2. THE LANDS SURVEYED LIE WITHIN SECTION 29, T20N - R35E, MDB & M. AND THE SURVEY WAS COMPLETED ON NOVEMBER 6, 1995.  
3. THIS PLAT COMPLES WITH THE APPLICABLE STATE STATUTES AND ANY LOCAL ORDINANCES IN EFFECT ON THE DATE THAT THE GOVERNING BODY GAVE ITS FINAL APPROVAL.  
4. THE MONUMENTS DEPICTED ON THE PLAT ARE OF THE CHARACTER SHOWN TO COPY THE POSITIONS INDICATED AND ARE OF SUFFICIENT NUMBER AND DURABILITY.

ROBERT E. WORLEY, P.L.S. 6203  
PLANNING COMMISSION APPROVAL  
AT A REGULAR MEETING OF THE EUREKA COUNTY REGIONAL PLANNING COMMISSION, STATE OF NEVADA, HELD ON THE 22nd DAY OF December, 1995, THIS MAP WAS DULY APPROVED.

COUNTY COMMISSIONERS APPROVAL

AT A REGULAR MEETING OF THE EUREKA COUNTY COMMISSIONERS HELD ON the 22nd DAY OF December, 1995, THIS MAP, CONSISTING OF ONE SHEET WAS PRESENTED AS A PROPOSED PARCEL MAP IN SECTION 29, T20N - R35E, MDB & M. EUREKA COUNTY HEREBY ACCEPTS THE OFFER OF DEDICATION FOR PUBLIC PURPOSES OF THE STREETS AND ROAD RIGHTS OF WAY AND PUBLIC UTILITY RIGHTS OF WAY SHOWN ON THIS MAP. STREETS AND ROAD RIGHTS OF WAY ARE NOT ACCEPTED BY THE COUNTY UNTIL THEY ARE IMPROVED TO COUNTY STANDARDS, APPROVED BY THE EUREKA COUNTY DEPARTMENT OF PUBLIC WORKS, AND EXPRESSLY ACCEPTED BY RESOLUTION OF THE BOARD OF EUREKA COUNTY COMMISSIONERS.

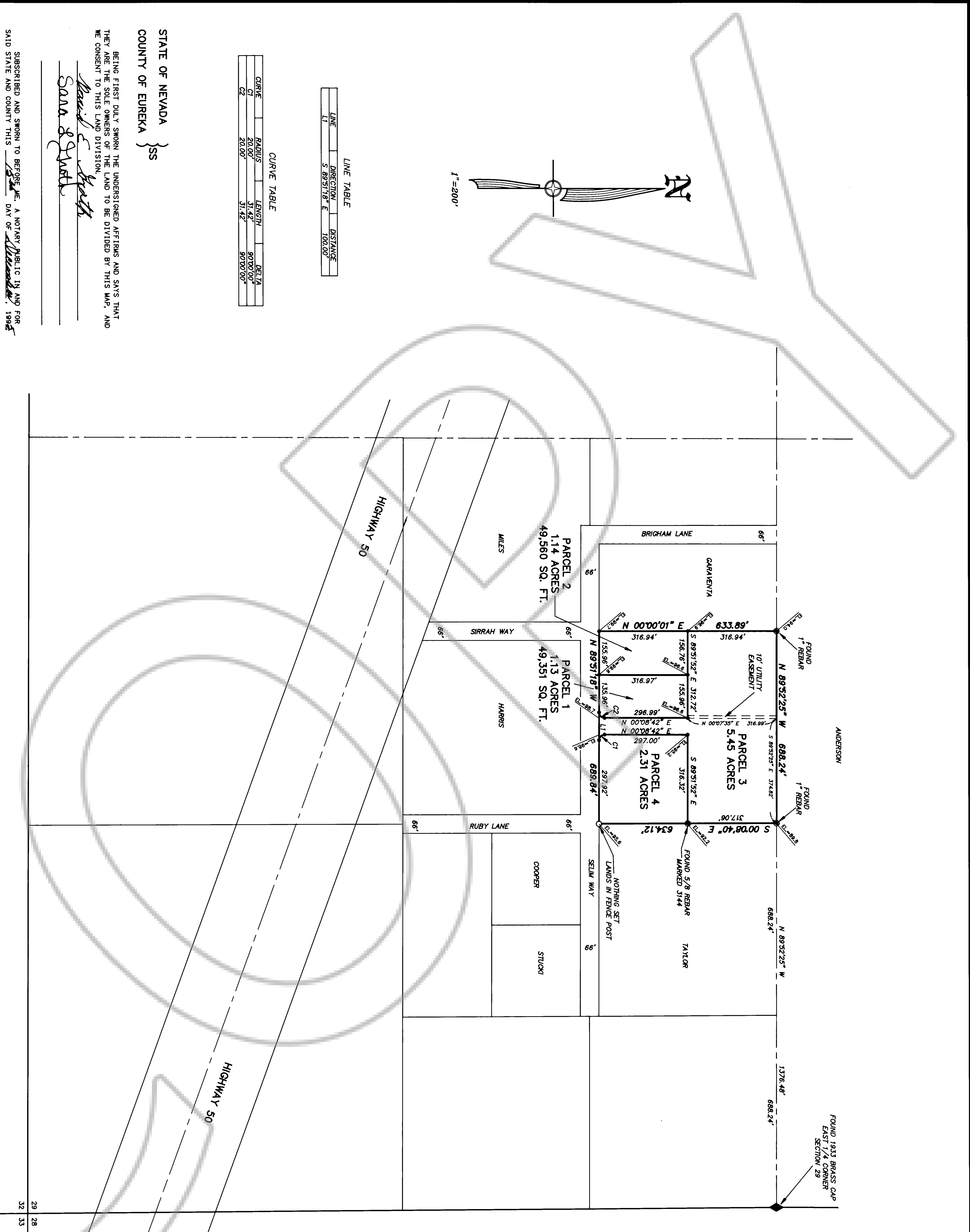
ACCEPTANCE OF THIS PARCEL MAP BY EUREKA COUNTY DOES NOT CONSTITUTE A GUARANTEE THAT EACH OR ANY LOT SHOWN HEREON CONTAINS A LAWFUL BUILDING SITE.  
FURTHER REPARCELLING OF ANY PARCEL CREATED BY THIS MAP MAY BE SUBJECT TO THE PROVISIONS OF NRS 278.482.3 PERMITTING IMPOSITION OF REASONABLE IMPROVEMENT STANDARDS, BUT NOT GREATER IMPROVEMENTS THAN REQUIRED FOR SUBDIVISIONS.  
ALL REQUIREMENTS OF GOVERNMENTAL AGENCIES WITH PERMIT AUTHORITY MUST BE MET.

THIRD DIVISION OF LAND  
SCALE: 1"=200'  
0 200 400 600 800

PARCEL MAP

FOR  
DAVID E. AND SARA L. GROTH  
IN  
SECTION 29, T.20 N., R.53 E., M.D.B. & M.  
EUREKA COUNTY, NEVADA

HIGH DESERT ENGINEERING  
640 DAKOTA STREET  
EKO, NEVADA 89901  
(702) 798-4033  
95166

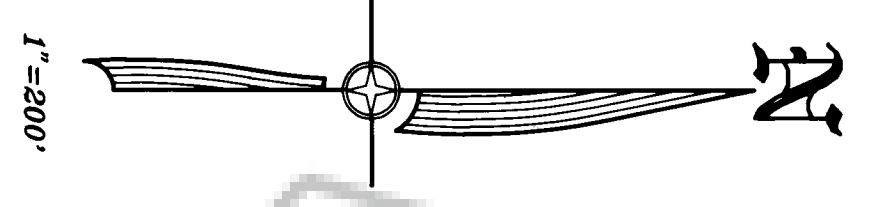


CURVE TABLE

CURVE	RADIUS	LENGTH	DELTA
C1	20.00'	31.42'	90°00'00"
C2	20.00'	31.42'	90°00'00"

LINE TABLE

LINE	DIRECTION	DISTANCE
L1	S 89°51'18" E	100.00'



STATE OF NEVADA }  
COUNTY OF EUREKA } SS

BEING FIRST DULY SWORN THE UNDERSIGNED AFFIRMS AND SAYS THAT THEY ARE THE SOLE OWNERS OF THE LAND TO BE DIVIDED BY THIS MAP, AND WE CONSENT TO THIS LAND DIVISION.  
David E. Groth  
Sara L. Groth

SUBSCRIBED AND SWORN TO BEFORE ME, A NOTARY PUBLIC IN AND FOR SAID STATE AND COUNTY THIS DAY OF December, 1995.  
NOTARY PUBLIC  
David E. Groth

NOTES:

- 1) THE TOTAL SUBDIVIDED AREA OF THIS MAP EQUALS 10.03 ACRES.
- 2) THE PARCELS SHOWN ON THIS MAP DO NOT LIE IN A FLOOD PLAIN.
- 3) BASIS OF BEARINGS: THE PARCEL MAP FOR BYRON HARRIS ON FILE IN THE OFFICE OF THE EUREKA COUNTY RECORDER, EUREKA NEVADA, AS FILE NO. 89399.
- 4) IN ADDITION TO ANY EASEMENTS SHOWN, THE PARCELS SHOWN ARE SUBJECT TO 5.00 FOOT DRAINAGE AND UTILITY EASEMENTS ALONG ALL BOUNDARY LINES.
- 5) THIS MAP SUBDIVIDES PARCEL NO. 3 AS SHOWN ON THE PARCEL MAP FOR BYRON HARRIS ON FILE IN THE OFFICE OF THE EUREKA COUNTY RECORDER, EUREKA, NEVADA, AS FILE NO. 89399.

LEGEND

- ◆ FOUND EAST 1/4 CORNER
- SET 5/8" REBAR WITH CAP MARKED PLS 6203
- FOUND REBAR AS NOTED
- NOTHING SET AS NOTED

COUNTY TREASURER'S CERTIFICATE

THIS IS TO CERTIFY THAT PARCEL NO. 07-380-40 HAS NO DELINQUENCIES AND THAT TAXES ARE PAID THROUGH 6-30-96  
DATE 12-15-95  
EUREKA COUNTY TREASURER  
David E. Groth

FILING DATA

FILE NO. 116258  
FILED AT THE REQUEST OF HIGH DESERT ENGINEERING.  
DATE 12-15-95  
TIME 10:34 AM  
M. N. Rebalachy  
EUREKA COUNTY RECORDER  
Dianne Stewart Deputy