

SLAGOWSKI RANCHES, Inc.
Eureka County Ranch lands
April 1997

SUMMARY PARCEL # 05-670-43
TOTAL ACRES: 4,771.89
HWR R ACRES: 26.23

PARCEL # LEGAL DESCRIPTION ACRES

5-670-21 T28N,R52E Section 10 SE4NW4;NE4SW4;NW4SE4 120.00

5-670-22 T28N,R52E Section 10 SE4NE4 40.00

5-670-33 T28N,R52E Section 3 S2S2 160.00

5-670-37 T28N,R52E Section 7 SE4SW4 40.00

5-670-43 *Summary Parcel T28N,R52E Section 8 W2;S2SE4 SE4SE4SE4

Section 9 S2SW4;SW4SE4;W2SE4SE4; SE4SE4SE4

Section 10 SW4SW4

Section 14 S2NW4

Section 15 S2NE4;E2NW4;NW4NW4

Section 16 W2;SW4SE4

Section 17 E2;NE4SW4;NW4 (-2.72Ac HWR R) 1,750.00

T28N,R52E Section 20 NE4NE4

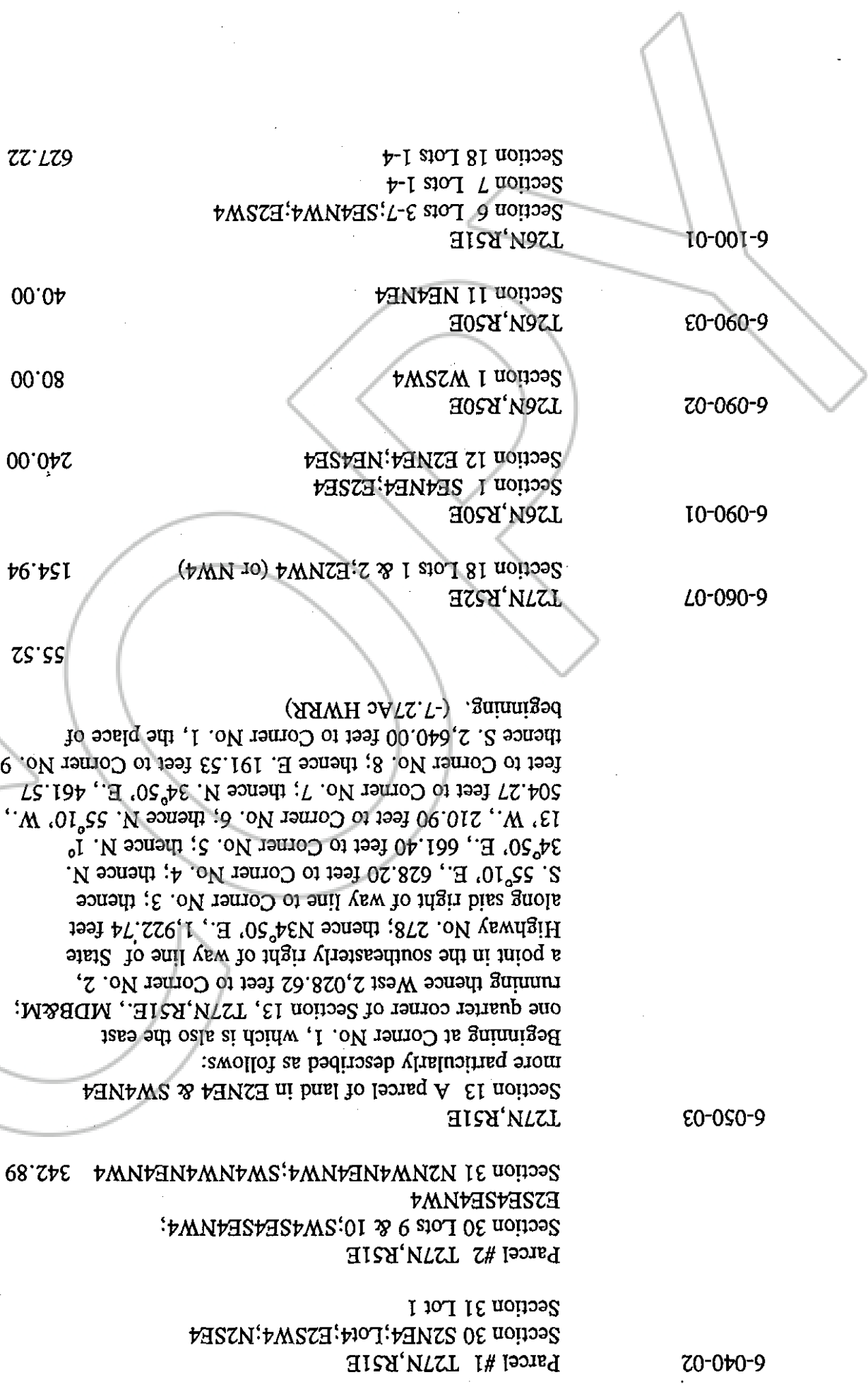
Section 21 NW4;W2NE4;SE4NE4;N2SE4

Section 22 N2SW4;SE4

Section 23 Lots 6, 7 & 8; N2SW4;SE4SW4 W2SE4 (or S2)

Section 24 N2SW4;Lots 7 & 8 (or SW4) (-16.24Ac HWR R)

1,121.32



6-040-02

Parcel #1 T27N,R51E
 Section 30 S2NE4;Lot4;E2SW4;N2SE4
 Section 31 Lot 1

6-050-03

Parcel #2 T27N,R51E
 Section 30 Lots 9 & 10;SW4SE4SE4NW4;
 E2SE4SE4NW4
 Section 31 N2NW4NE4NW4;SW4NW4NE4NW4 342.89
 Section 13 A parcel of land in E2NE4 & SW4NE4
 more particularly described as follows:
 Beginning at Corner No. 1, which is also the east
 one quarter corner of Section 13, T27N,R51E, MDB&M;
 running thence West 2,028.62 feet to Corner No. 2,
 a point in the southeasterly right of way line of State
 Highway No. 278; thence N34°50' E., 1,922.74 feet
 along said right of way line to Corner No. 3; thence
 S. 55°10' E., 628.20 feet to Corner No. 4; thence N.
 34°50' E., 661.40 feet to Corner No. 5; thence N. 1°
 13' W., 210.90 feet to Corner No. 6; thence N. 55°10' W.,
 504.27 feet to Corner No. 7; thence N. 34°50' E., 461.57
 feet to Corner No. 8; thence E. 191.53 feet to Corner No. 9;
 thence S. 2,640.00 feet to Corner No. 1, the place of
 beginning. (-7.27Ac HWRR)

6-060-07

T27N,R52E
 Section 18 Lots 1 & 2;E2NW4 (or NW4)

6-090-01

T26N,R50E
 Section 1 SE4NE4;E2SE4
 Section 12 E2NE4;NE4SE4

6-090-02

T26N,R50E
 Section 1 W2SW4

6-090-03

T26N,R50E
 Section 11 NE4NE4

6-100-01

T26N,R51E
 Section 6 Lots 3-7;SE4NW4;E2SW4
 Section 7 Lots 1-4
 Section 18 Lots 1-4

627.22

40.00

80.00

240.00

154.94

55.52