

9000' E-W

BKV 1	2	31	32	61	62
3	4	33	34	63	64
5	6	35	36	65	66
7	8	37	38	67	68
9	10	39	40	69	70
11	12	41	42	71	72
13	14	43	44	73	74
15	16	45	46	75	76
17	18	47	48	77	78
19	20	49	50	79	80
21	22	51	52	81	82
23	24	53	54	83	84
25	26	55	56	85	86
27	28	57	58	87	88
29	30	59	60	89	90

9000' E-W

R 51 E R 52 E

T 21 N

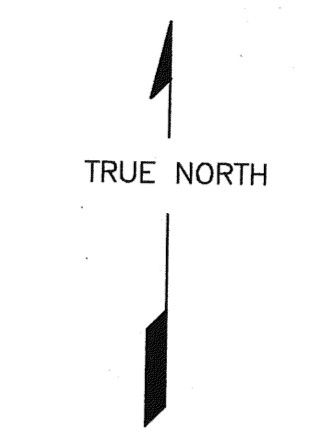
2060'

24 19
25 30

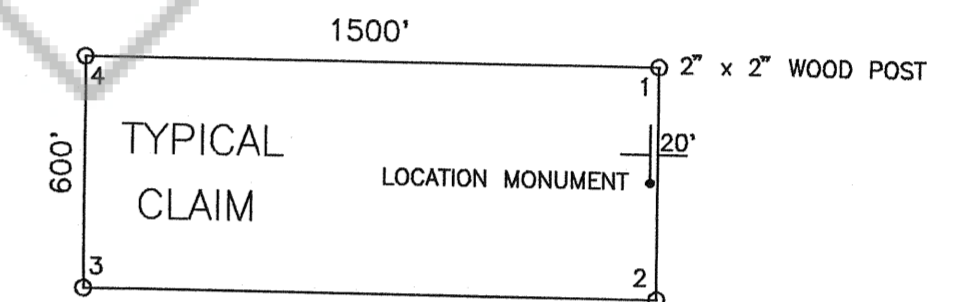
NOTE: THE NW CORNER BKV 11 IS APPROXIMATELY
136 FEET NORTH AND 2060 FEET EAST OF THE
NW CORNER SECTION 30 T 21 N, R 52 E.

9000' N-S

9000' N-S



0 500'
SCALE 1"=500'



ALL CLAIMS ARE 1500' x 600'
UNLESS OTHERWISE NOTED.

BARRICK GOLD EXPLORATION, INC.
293 SPRUCE ROAD
ELKO, NEVADA 89801-4491

LODE CLAIMS BKV 1-90
EUREKA COUNTY, NEVADA
PROJECTED SECTIONS: 19,20,21,28,29,30,31,32,33
T 21 N, R 52 E M.D.B.M.

LOCATED: APRIL 30, 1997 BKV 1-90

PREPARED BY: OLSON LAND SURVEYING &
MINERAL EXPLORATION, INC.
200 RAPID CANYON DRIVE
EVANSTON, WYOMING 82930

FILED AT THE REQUEST OF *Barrick Gold Exploration*
on *July 7* 19*97*, at *39* mins. past *11* A.M.
RECORDS OF EUREKA COUNTY, NEVADA M. N. REBELETT Recorder
Fee \$ *1350.00*
File No. **167488**