

167542

NOTES

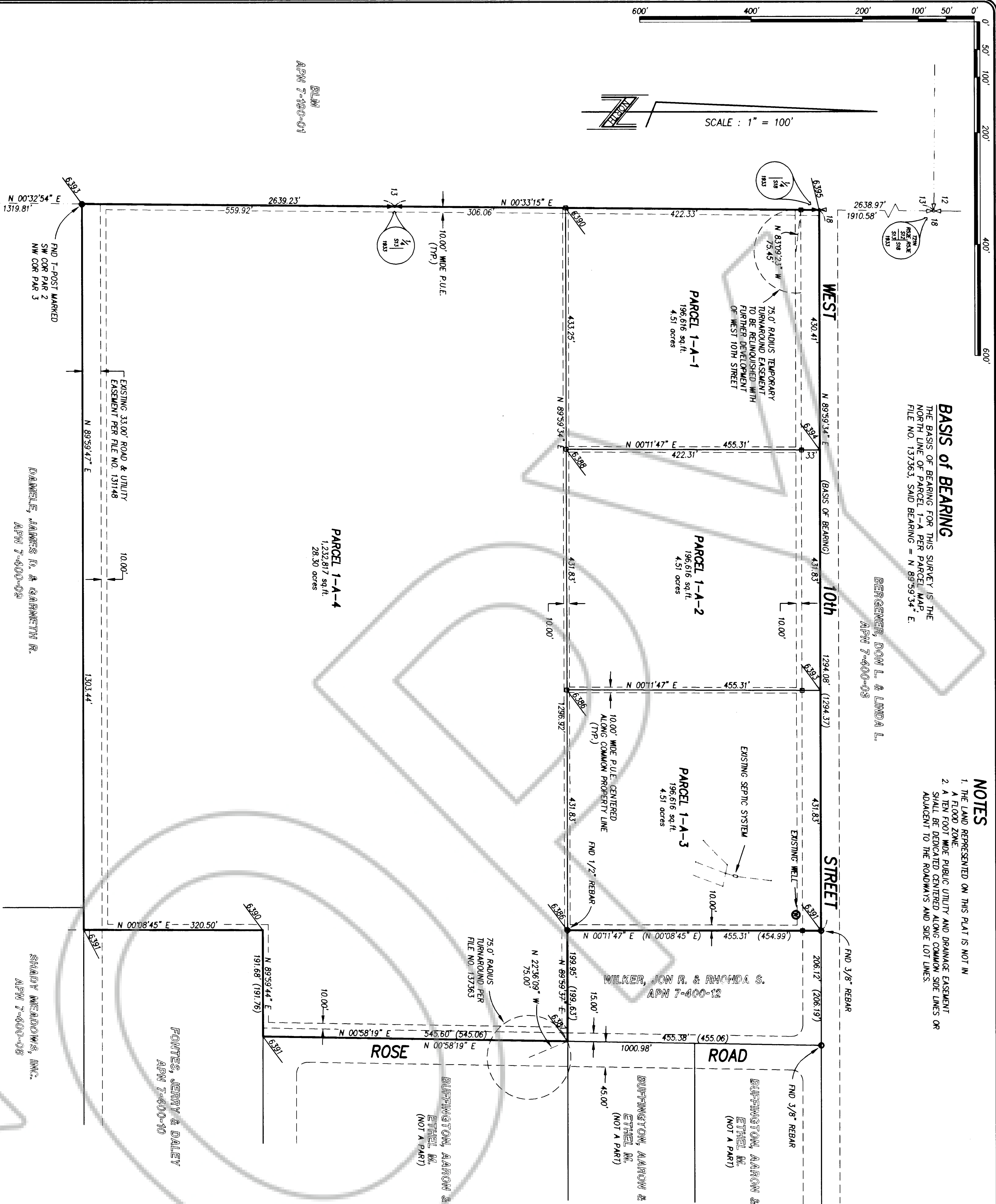
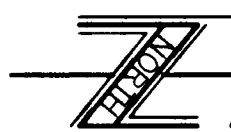
1. THE LAND REPRESENTED ON THIS PLAT IS NOT IN A FLOOD ZONE.
2. A TEN FOOT WIDE PUBLIC UTILITY AND DRAINAGE EASEMENT SHALL BE DEDICATED CENTERED ALONG COMMON SIDE LINES OR ADJACENT TO THE ROADWAYS AND SIDE LOT LINES.

BASIS of BEARING

THE BASIS OF BEARING FOR THIS SURVEY IS THE NORTH LINE OF PARCEL 1-A PER PARCEL MAP FILE NO. 137363, SAID BEARING = N 89°59'34" E.

BERGEMER, DON L. & LINDA L.
APN 7-400-03

SCALE : 1" = 100'



SURVEYOR'S CERTIFICATE

I, WAYNE KOOPER, A PROFESSIONAL LAND SURVEYOR REGISTERED IN THE STATE OF NEVADA, CERTIFY THAT:

- 1) THIS PLAT REPRESENTS THE RESULTS OF A SURVEY CONDUCTED UNDER MY DIRECT SUPERVISION AT THE INSTANCE OF AARON BUFFINGTON.
- 2) THE LANDS SURVEYED LIE WITHIN SECTION 18, TOWNSHIP 21 NORTH, RANGE 53 EAST, M.D.M., AND THE SURVEY WAS COMPLETED ON 7/11/97.
- 3) THIS PLAT COMPLIES WITH THE APPLICABLE STATE STATUTES AND ANY LOCAL ORDINANCES IN EFFECT ON THE DATE THAT THE GOVERNING BODY GAVE ITS FINAL APPROVAL.
- 4) THE MONUMENTS DEPICTED ON THE PLAT ARE OF THE CHARACTER SHOWN, OCCUPY THE POSITIONS INDICATED AND ARE OF SUFFICIENT NUMBER AND DURABILITY.

Wayne Kooper
7/11/97
DATE

OWNER'S CERTIFICATE

STATE OF NEVADA
COUNTY OF EUREKA }

BEING FIRST DULY SWORN, THE UNDERSIGNED, AARON AND ETHEL M. BUFFINGTON, AFFIRM THAT THEY ARE THE SOLE OWNERS OF THE LAND TO BE DIVIDED BY THIS MAP, AND WE CONSENT TO THIS LAND DIVISION.

Aaron Buffington
Ethel M. Buffington
SUBMITTED AND SWORN TO BEFORE ME, A NOTARY PUBLIC IN AND FOR SAID STATE AND COUNTY, THIS 11th DAY OF July, 1997.

Deey Duvvichek
NOTARY PUBLIC
GLADY GONCOCHEA
Notary Public, State of Nevada
My Commission Expires Oct. 28, 1998

COUNTY TREASURER'S CERTIFICATE

THIS IS TO CERTIFY THAT ASSESSOR'S PARCEL NO. 07-400-11 HAS NO DELINQUENCIES AND THAT TAXES ARE PAID THROUGH 02-30-97.

Deey Duvvichek
COUNTY TREASURER
July 14, 1997

PLANNING COMMISSION APPROVAL

AT A REGULAR MEETING OF THE EUREKA COUNTY REGIONAL PLANNING COMMISSION, STATE OF NEVADA, HELD ON THE 17th DAY OF July, 1997, THIS MAP WAS DULY APPROVED.

Charles G. Gentry
CHAIRPERSON

COUNTY COMMISSION APPROVAL

AT A REGULAR MEETING OF THE EUREKA COUNTY COMMISSIONERS HELD ON THE 11th DAY OF July, 1997 THIS MAP, CONSISTING OF ONE SHEET WAS PRESENTED AS A PROPOSED PARCEL MAP OF PARCEL 1-A, PARCEL MAP FILE NO. 137363.

EUREKA COUNTY HEREBY ACCEPTS THE GREEK OF DEDICATION FOR PUBLIC PURPOSES OF THE STREET AND ROAD RIGHTS OF WAY AND PUBLIC UTILITY RIGHTS OF WAY SHOWN ON THIS MAP. STREETS AND ROAD RIGHTS OF WAY ARE NOT ACCEPTED BY THE COUNTY UNTIL THEY ARE IMPROVED TO COUNTY STANDARDS, APPROVED BY THE EUREKA COUNTY DEPARTMENT OF PUBLIC WORKS, AND EXPRESSLY ACCEPTED BY RESOLUTION OF THE BOARD OF EUREKA COUNTY COMMISSIONERS.

Charles G. Gentry
CHAIRMAN, EUREKA COUNTY COMMISSIONERS

Deey Duvvichek
COUNTY CLERK

ACCEPTANCE OF THIS PARCEL MAP BY EUREKA COUNTY DOES NOT CONSTITUTE A GUARANTEE THAT EACH OR ANY LOT SHOWN THEREON CONTAINS A LAWFUL BUILDING SITE. FURTHER REPARCELING OF ANY PARCEL CREATED BY THIS MAP MAY BE SUBJECT TO THE PROVISIONS OF NRS 278.462.3 PERMITTING IMPOSITION OF REASONABLE IMPROVEMENT STANDARDS, BUT NOT GREATER IMPROVEMENTS THAN REQUIRED FOR SUBDIVISIONS.

RECORDER'S CERTIFICATE

PARCEL MAP
FOR

AARON BUFFINGTON

A REDUCTION OF PARCEL 1-A, PARCEL MAP FILE NO. 137363, THE THIRD DIVISION OF PARCEL 2, SHADY MEADOWS ESTATES, A PORTION OF THE SW 1/4, SECTION 18, TOWNSHIP 21 NORTH, RANGE 53 EAST, M.D.M., EUREKA COUNTY, NEVADA

DATE: July 11, 1997
JOB NO.: 3891-000
SHEET 1 OF 1

FILED AT THE REQUEST OF
AARON BUFFINGTON
ON THE 23rd DAY OF July, 1997,
AT 59 MIN. PAST 1:00 P.M. IN THE
OFFICIAL RECORDS OF EUREKA COUNTY,
NEVADA.
FILE NUMBER: 167542
FEE: \$ 17.00

LEGEND

- o FOUND 5/8" REBAR OR AS NOTED
- SET 5/8" REBAR W/CAP - PLS 6304
- ⊕ FOUND STD. BLM SECTION CORNER
- ⊕ FOUND STD. BLM 1/4 CORNER
- 542.25' MEASURED
- (542.25') RECORD PER REFERENCE DOCUMENT "B"
- x — WIRE FENCE
- o — CHAIN LINK FENCE

TOTAL AREA DIVIDED

1,022,844 sq. ft.

41.84 acres

REFERENCE DOCUMENTS

- A) PARCEL MAP FOR TOM BUFFINGTON, FILE NO. 134148, OFFICIAL RECORDS OF EUREKA COUNTY.
- B) PARCEL MAP FOR AARON BUFFINGTON, FILE NO. 137363, OFFICIAL RECORDS OF EUREKA COUNTY.

DAWLEY, JAMES D. & GARNETT R.
APN 7-400-09

SHADY MEADOWS, INC.
APN 7-400-08

FONTES, JERRY & DALEY
APN 7-400-10

BUFFINGTON, AARON &
ETHEL M.
(NOT A PART)

BUFFINGTON, AARON &
ETHEL M.
(NOT A PART)

BUFFINGTON, AARON &
ETHEL M.
(NOT A PART)

WILKER, JON R. & RHONDA G.
APN 7-400-12

75' RADIUS
TURNAROUND PER
FILE NO. 137363

PARCEL 1-A-4
1,232,817 sq. ft.
28.30 acres

PARCEL 1-A-1
196,616 sq. ft.
4.51 acres

PARCEL 1-A-2
196,616 sq. ft.
4.51 acres

PARCEL 1-A-3
196,616 sq. ft.
4.51 acres

BLM
APN 7-180-01

FIND 1-POST MARKED
SW COR PAR 2
NW COR PAR 3