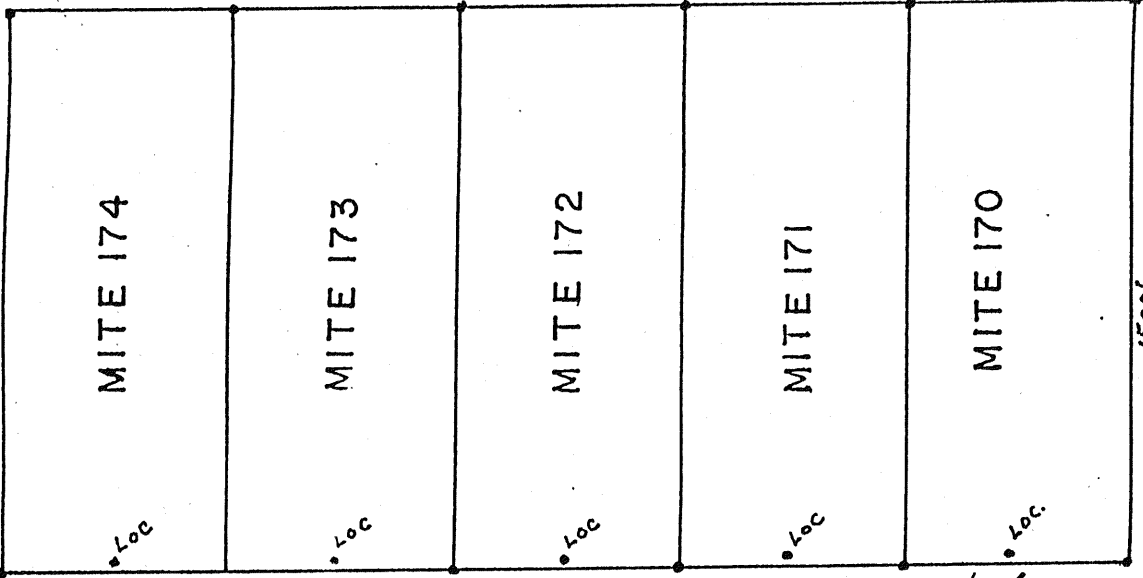


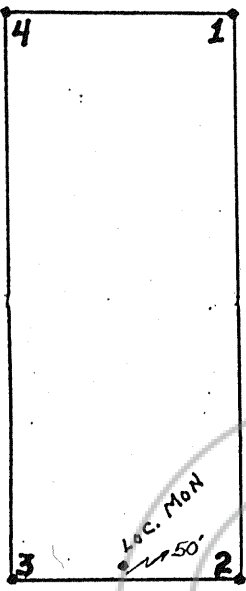
R 53 EAST
R 52 EAST

167586



N.W. CORNER

N.E. CORNER



S.W. CORNER

S.E. CORNER

Claim Boundary Monument Designation

All Monuments Are
2" x 2" Wooden Post
4' Long

Map of MITE-170-174

LODE CLAIMS

Located June 27, 1997
WESTERN CHEMICALS INC.
335 N. WILMOT ROAD, SUITE 400
TUCSON, ARIZONA 85711

1" = 500'

● Boundary Monuments

WESTERN CHEMICALS INCORPORATED
UNKNOWN MINING DISTRICT
EUREKA COUNTY NEVADA

TOWNSHIP 18 NORTH RANGES 52 & 53
EAST

M.D.B. & M

FILED AT THE REQUEST OF Western Chemicals Inc
on Aug 5 19 97, at 47 mins, past 1 P. M.
RECORDS OF EUREKA COUNTY, NEVADA M. N. RESALEATI, Recorder
File No. 167586 Fee \$ 75.00

N 06° W

8625'



SURVEYED SECTION CORNER

13 18

24 19