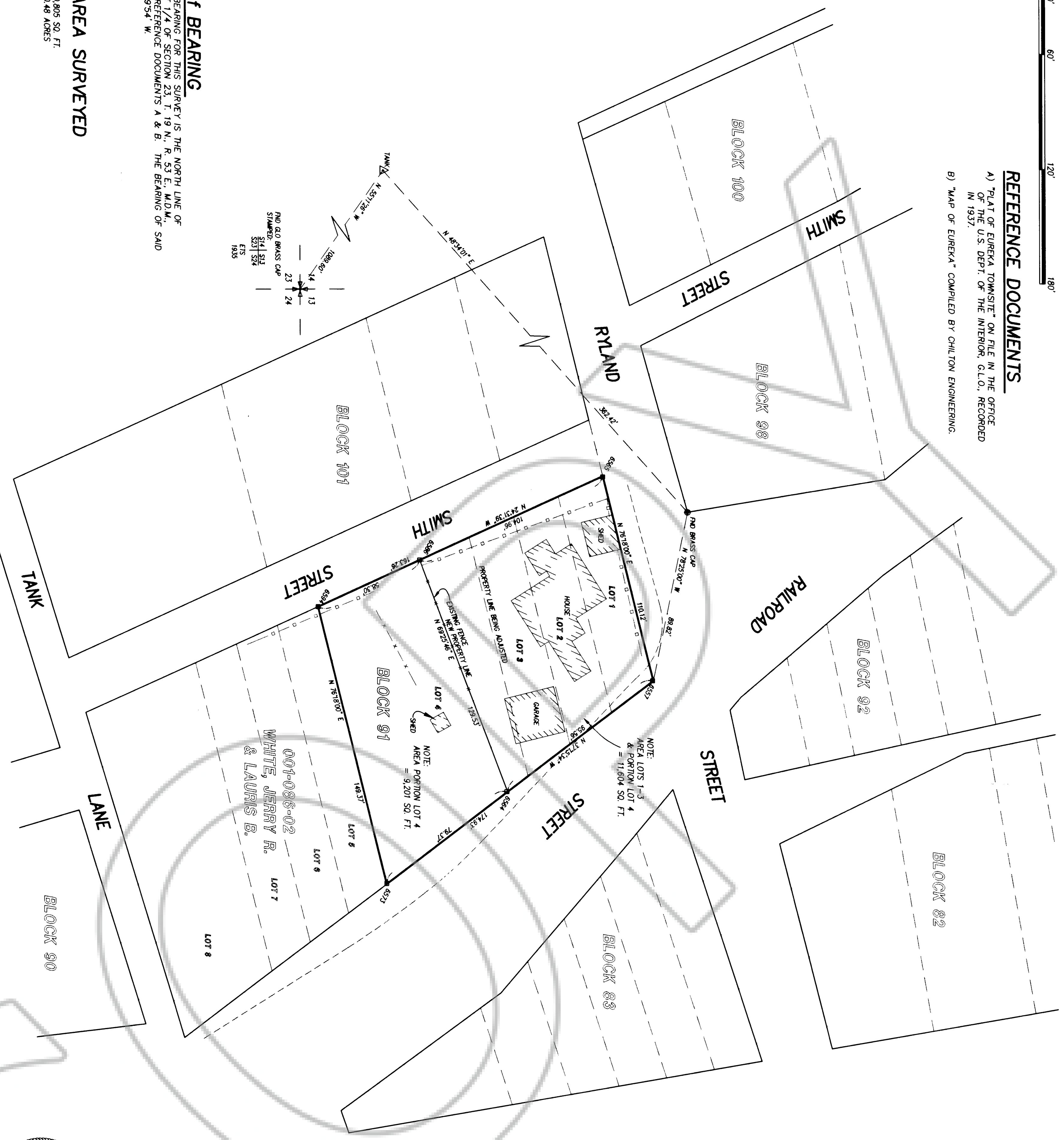
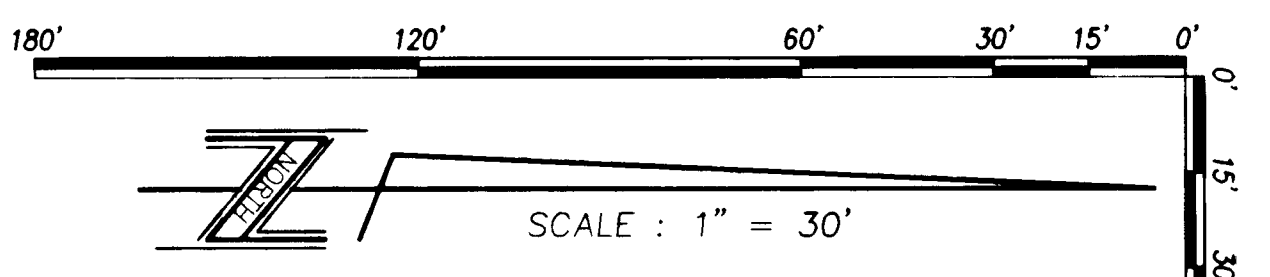


REFERENCE DOCUMENTS

- A) "PLAT OF EUREKA TOWNSITE" ON FILE IN THE OFFICE OF THE U.S. DEPT. OF THE INTERIOR, G.L.O., RECORDED IN 1937.
- B) "MAP OF EUREKA" COMPILED BY CHILTON ENGINEERING.



BASIS of BEARING
 THE BASIS OF BEARING FOR THIS SURVEY IS THE NORTH LINE OF THE NORTHWEST 1/4 OF SECTION 23, T. 19 N., R. 53 E., M.D.M., AS SHOWN ON REFERENCE DOCUMENTS A & B. THE BEARING OF SAID LINE BEING S 89°54' W.

TOTAL AREA SURVEYED
 20,885 SQ. FT.
 0.48 ACRES

- LEGEND**
- 6513 GROUND ELEVATION AT PROPERTY CORNER
 - SET 5/8" REBAR W/CAP - PLS 6304
 - ✕ FOUND STD. GLO SECTION CORNER
 - ⊙ FOUND STD. GLO 1/4 CORNER
 - FOUND STD. BRASS CAP PER REFERENCE A
 - △ BRASS CAP - USGS STATION "TANK"

- NOTES**
- 1) THIS RECORD OF SURVEY IS REQUIRED PER N.R.S. 625.340.
 - 2) THIS IS NOT A PARCEL MAP AS DEFINED IN N.R.S.
 - 3) NO NEW PARCELS ARE CREATED AS A RESULT OF THIS MAP.
 - 4) THE INTENT OF THIS MAP IS TO SHOW A LOT LINE ADJUSTMENT BETWEEN LOTS 1-3 AND LOT 4, BLOCK 91, EUREKA TOWNSITE.
 - 5) THE LAND REPRESENTED ON THIS PLAT IS NOT IN A FLOOD ZONE.

GOVERNING AGENCY CERTIFICATE

EUREKA COUNTY HAS REVIEWED AND APPROVED THIS MAP AT THEIR MEETING HELD ON THE 20th DAY OF August 1997.

APPROVED BY: *[Signature]*
 CHAIRMAN, EUREKA COUNTY COMMISSION

[Signature]
 CLERK, EUREKA COUNTY

DATE: July 20, 1997

OWNER'S CERTIFICATE

WE THE UNDERSIGNED OWNERS OF THE AFFECTED PARCELS AS SHOWN ON THIS PLAT DO HEREBY STATE:
 1) WE HAVE EXAMINED THIS PLAT AND APPROVE AND AUTHORIZE ITS RECORDING.
 2) ALL PROPERTY TAXES ON THE LAND FOR THE FISCAL YEAR HAVE BEEN PAID.
 3) I, AS LENDER WITH AN AMOUNT ACCOUNT FOR THE PAYMENT OF TAXES HAVE BEEN ADVISED OF THE ADJUSTMENT OF THE BOUNDARY LINE OR THE TRANSFER OF LAND.

[Signature]
 ELIA I. MCKAY
 LOTS 1 - 4, BLOCK 91,
 EUREKA TOWNSITE
 EUREKA COUNTY, NEVADA

[Signature]
 SUSAN DUNT
 LOTS 1 - 4, BLOCK 91,
 EUREKA TOWNSITE
 EUREKA COUNTY, NEVADA

[Signature]
 STATE OF NEVADA
 COUNTY OF WASHOE
 SIGNED BEFORE ME ON THIS 23 DAY OF July 1997,
 BY ELIA I. MCKAY.

[Signature]
 STATE OF NEVADA
 COUNTY OF WASHOE
 SIGNED BEFORE ME ON THIS 23 DAY OF July 1997,
 BY ELIA I. MCKAY.

[Signature]
 STATE OF NEVADA
 COUNTY OF WASHOE
 SIGNED BEFORE ME ON THIS 23 DAY OF August 1997,
 BY ROBERT D. MCKAY.

[Signature]
 STATE OF NEVADA
 COUNTY OF WASHOE
 SIGNED BEFORE ME ON THIS 23 DAY OF July 1997,
 BY DOUGLAS G. MCKAY.

[Signature]
 STATE OF NEVADA
 COUNTY OF WASHOE
 SIGNED BEFORE ME ON THIS 23 DAY OF July 1997,
 BY DOUGLAS G. MCKAY.

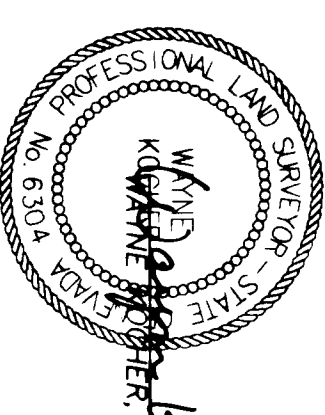
[Signature]
 STATE OF NEVADA
 COUNTY OF WASHOE
 SIGNED BEFORE ME ON THIS 3 DAY OF July 1997,
 BY SUSAN DUNT.

[Signature]
 STATE OF NEVADA
 COUNTY OF WASHOE
 SIGNED BEFORE ME ON THIS 3 DAY OF July 1997,
 BY SUSAN DUNT.

[Signature]
 STATE OF NEVADA
 COUNTY OF WASHOE
 SIGNED BEFORE ME ON THIS 3 DAY OF July 1997,
 BY SUSAN DUNT.

SURVEYOR'S CERTIFICATE

I, WYNNE KOOPER, A PROFESSIONAL LAND SURVEYOR IN THE STATE OF NEVADA, DO HEREBY STATE THAT:
 1) I HAVE PERFORMED A FIELD SURVEY SUFFICIENT TO LOCATE AND IDENTIFY PROPERLY THE PROPOSED BOUNDARY LINE ADJUSTMENT.
 2) THE SURVEY WAS CONDUCTED AT THE INSTANCE OF ELLA I. MCKAY, ET AL.
 3) THE LANDS SURVEYED LIE WITHIN THE SE 1/4 OF SECTION 14, TOWNSHIP 19 NORTH, RANGE 53 EAST, MERIDIAN, AND THE SURVEY WAS COMPLETED ON JUNE 10, 1997.
 4) ALL CORNERS AND ANGLE POINTS OF THE ADJUSTED BOUNDARY HAVE BEEN DEFINED BY MONUMENTS OR WILL BE OTHERWISE DEFINED ON A DOCUMENT OF RECORD AS REQUIRED BY NRS 625.340, AND THIS MAP IS NOT IN CONFLICT WITH THE PROVISIONS OF NRS 625 AND ALL LOCAL ORDINANCES.
 5) THIS MAP IS NOT IN CONFLICT WITH THE PROVISIONS OF NRS 625 AND ALL LOCAL ORDINANCES.



[Signature]
 WYNNE KOOPER, PLS 6304
 DATE: 7/20/97

RECORD OF SURVEY

SUPPORTING A BOUNDARY LINE ADJUSTMENT

FOR
 ELLA I. MCKAY, ET AL

LOTS 1 - 4, BLOCK 91, A PORTION OF THE SE 1/4 OF SECTION 14, T. 19 N., R. 53 E., M.D.M., EUREKA TOWNSITE, EUREKA COUNTY, NEVADA

DATE: JULY 3, 1997
 JOB NO: 3968/000
 SHEET 1 OF 1

RECORDER'S CERTIFICATE

FILED AT THE REQUEST OF

ROBERT D. MCKAY
 ON THE 22nd DAY OF August 1997,
 AT 3:15 P.M. PAST 8 A.M. IN THE OFFICIAL RECORDS OF EUREKA COUNTY, NEVADA.

FILE NUMBER: 167885
 L7700