

T 24 N
T 23.5 N

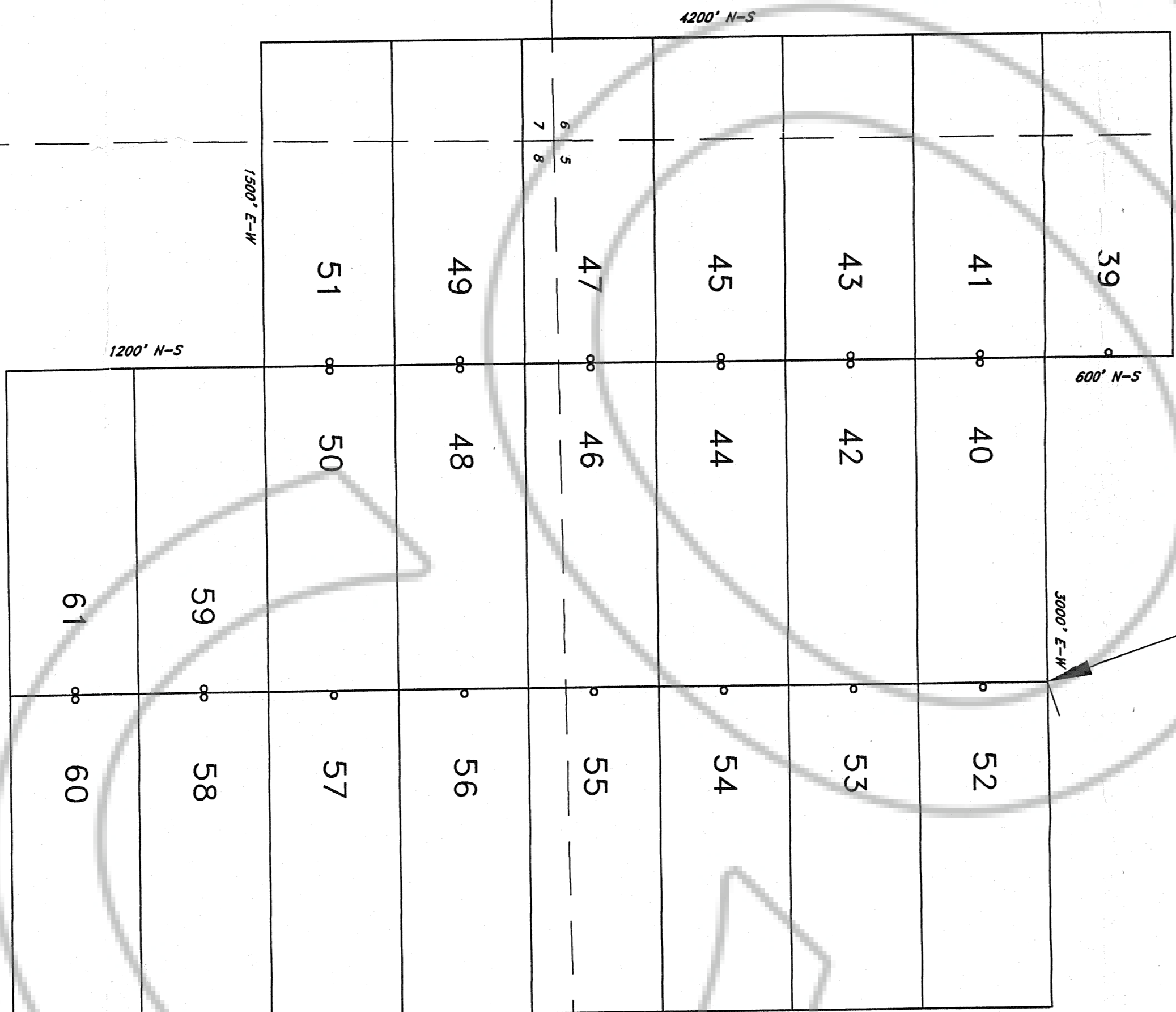
R 49 E

R 50 E

T 23.5 N
T 23 N

8722.4'
S18°58'E

EXISTING IMPERIAL CLAIMS



LOCATOR:

WHITE KNIGHT GOLD (U.S.), INC.
1020 West Main Street, Suite 312
Boise, Idaho 83702

NOTES:

All claims measure 1500' x 600'
All monuments are 1 1/2" x 1 1/2" x 4' wood posts
All with metal tags.
All location monuments shown as "o", one set 20' into claims.

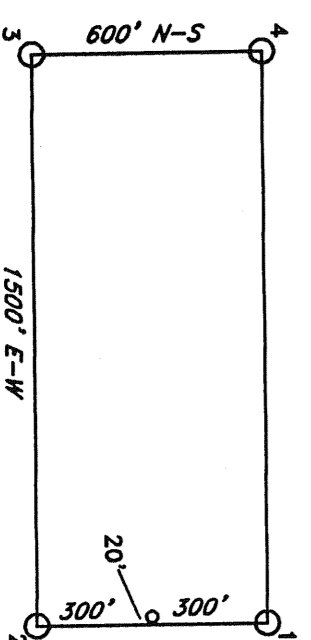
TIE:

The NW corner of IMPERIAL 52 bears S18°58'E 8722.4'
from the SW corner of Section 31 T24N, R50E

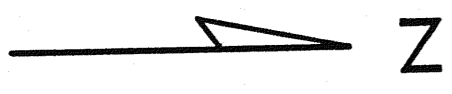
LOCATION DATE:

IMPERIAL 39-51 5-29-97
IMPERIAL 52-61 5-30-97

TYPICAL CLAIM:



500 0 500 1000 FEET



FILED AT THE REQUEST OF *White Knight Gold*
of *Boise, Idaho* on *7/19/97* at *7:22 AM*
RECORD # **168090** FEE \$ **12.00**

prepared by: T and T EXPLORATION SERVICES, INC.

IMPERIAL (39-61)
LODE MINING CLAIMS
Sections 5-8, T23N, R50E (unsurveyed)
Eureka County, Nevada
Map 1 of 1