

LOCATOR:
 WHITE KNIGHT GOLD (U.S.) INC.
 1020 West Main Street, Suite 312
 Boise, Idaho 83702

NOTES:
 All claims measure 1500' x 600' except for,
 P 205 which is 1200' x 400'

All monuments are 1 1/2" x 1 1/2" x 4' wood posts
 with metal tags.
 All location monuments shown as "o", are set 20' into claims except,
 P 162 which is set 5' into claim,
 P 179 & P 205 which are set 300' into claim.

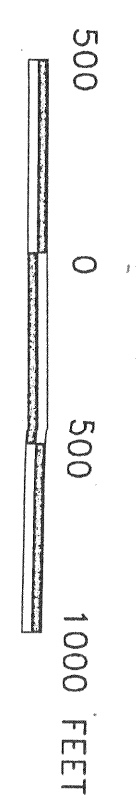
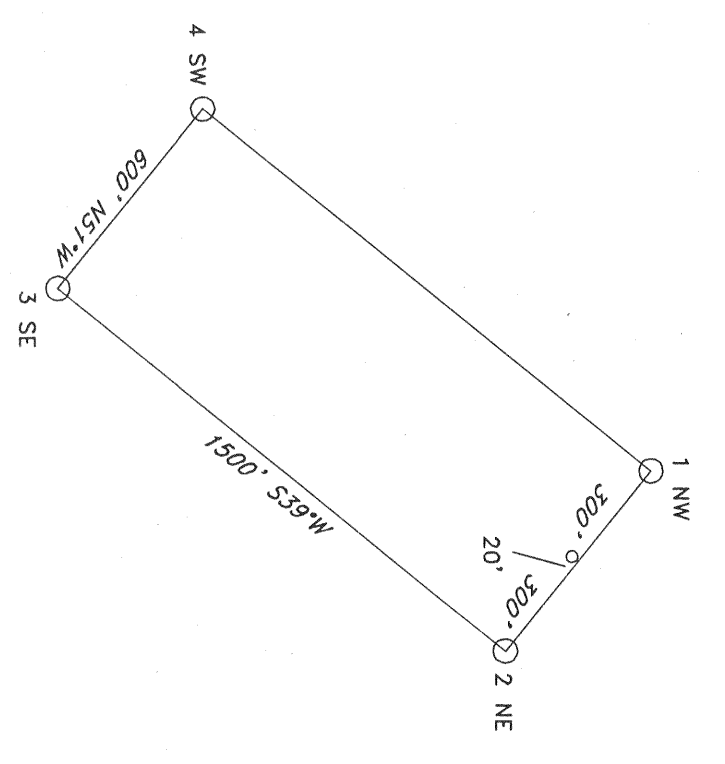
TIE:

The NE corner of P 162 bears S48°13'E, 321' from
 the 1/4 corner between sections 4 & 9, T24N, R49E

LOCATION DATE:

- 5-30-97 P 154-166
- 5-31-97 P 179, 181-194, 207-208
- 6-1-97 P 167-178, 195-205, 209-212

TYPICAL CLAIM:



prepared by: T and T EXPLORATION SERVICES, INC.

FILED AT THE REQUEST OF *White Knight Gold*
 on *June 26 19 97* At *10* A.M. REC. CASE # *5 PM*
 RECORDS OF CLERK COUNTY, NEVADA M. N. RICHMOND, JR.
 File No. **168148** Fee \$ **855.00**

P 154-179, 181-205, 207-212
 LODGE MINING CLAIMS
 Sections 4, 5, 8-10, 15-17
 T24N, R49E
 Eureka County, Nevada
 August 21, 1997 - DBA
 Map 1 of 1