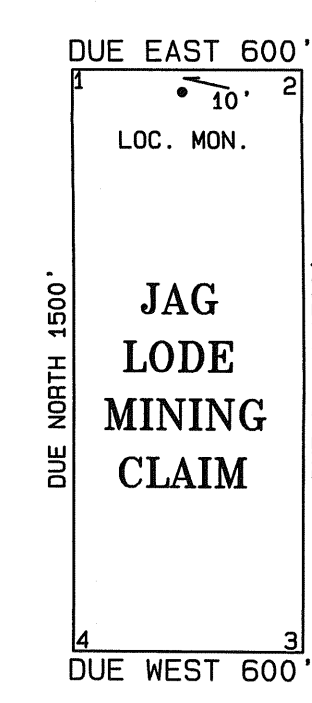


SCALE 1" = 500'
M.D.B. & M.

TYPICAL CLAIM & CORNER NUMBERS



ALL CLAIMS ARE 1500' X 600' UNLESS NOTED.
ALL LOCATION MONUMENTS ARE 10' IN FROM THE END CENTER
ALL CLAIM CORNERS & LOCATION MONUMENTS ARE 2"X2"X4' WOOD POST
TIE:
FROM THE SE CORNER OR SECTION 36, T17N, R51E, M.D.B. & M.,
BEAR N 6°47'57"E, 23473.5 FEET, TO THE SW CORNER OF JAG 208.
SECTION LINES ARE PROJECTED

LOCATION DATE:

OCTOBER 3, 1997 -----(200-215).

SHEET 1 of 1

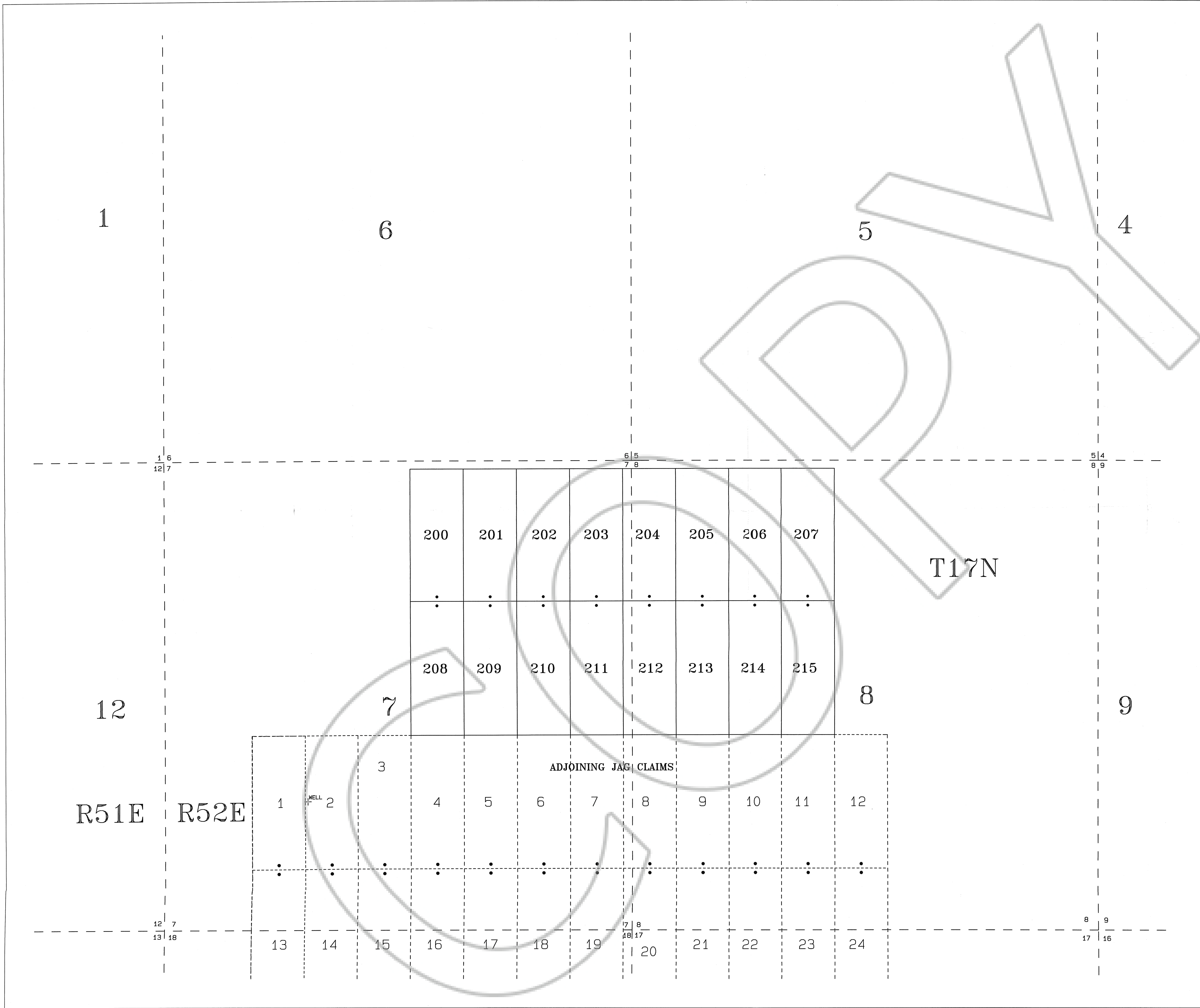
OWNER:

INDEPENDENCE MINING CO., INC.
ONE DTC, 5251 DTC PARKWAY, SUITE 700
ENGLEWOOD, CO. 80111

JAG LODE MINING CLAIMS
NO'S 200-215

SECS. 7&8, T17N, R52E, M.D.B. & M.
FILED AT THE REQUEST OF *Independence Mining Co*
on *Oct 21 1997* at *10:47* AM, DIST. *68*
RECORDS OF EUREKA COUNTY, NEVADA, BY *REBEKAH* RECORDER
File No. **168810** Fee \$ *225.00*

EUREKA COUNTY, NEVADA



1 6
12 7

6 5
7 8

5 4
8 9

T17N

200 201 202 203 204 205 206 207

⋮ ⋮ ⋮ ⋮ ⋮ ⋮ ⋮ ⋮

208 209 210 211 212 213 214 215

7

8

9

ADJOINING JAG CLAIMS

R51E R52E

1 2 3 4 5 6 7 8 9 10 11 12

⋮ ⋮ ⋮ ⋮ ⋮ ⋮ ⋮ ⋮ ⋮ ⋮ ⋮ ⋮

12 7
13 18

7 8
18 17

8 9
17 16

13 14 15 16 17 18 19 20 21 22 23 24