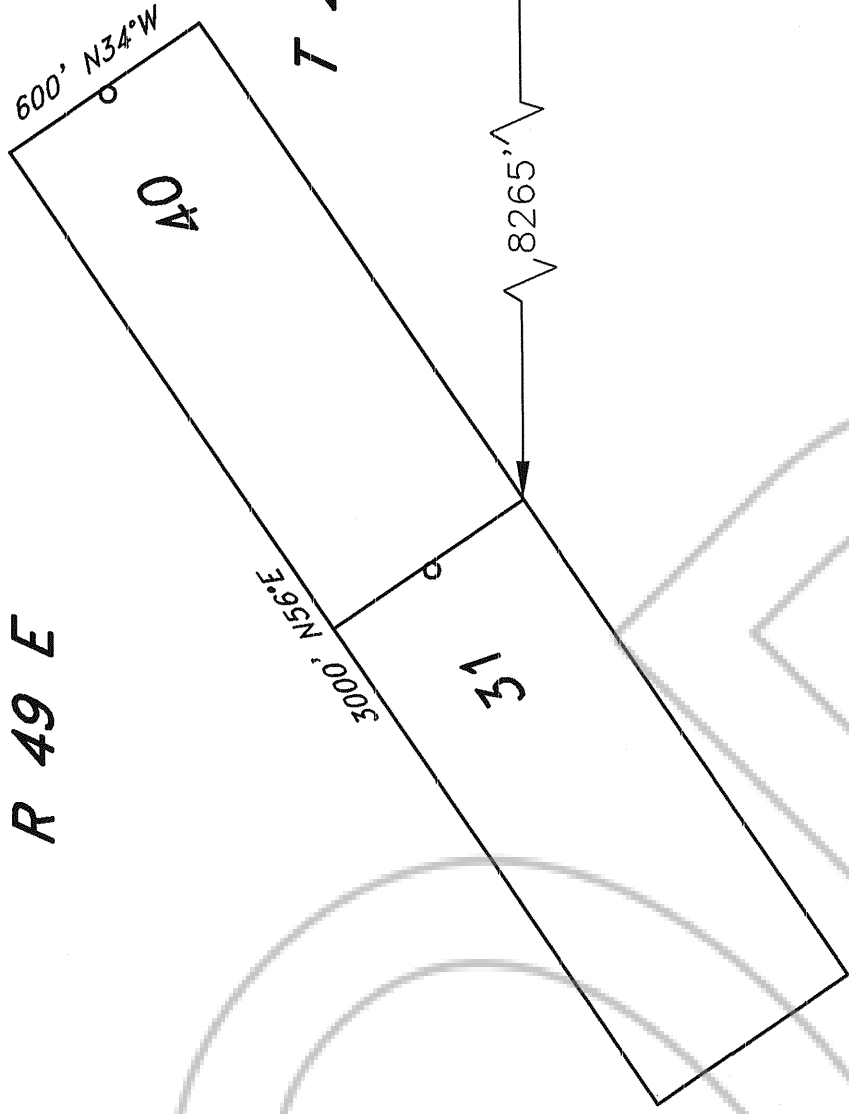


168983

9 10
16 15

R 49 E

T 24 N



LOCATOR:

WHITE KNIGHT GOLD (US) INC.
922-510 West Hastings Street
Vancouver, B.C. V6B1L8

LOCATION:

Sections 10, 15 T24N, R49E, M.D.B.M.
Eureka County, Nevada

LOCATION DATE:

Sept. 1, 1997

CC 31, 40

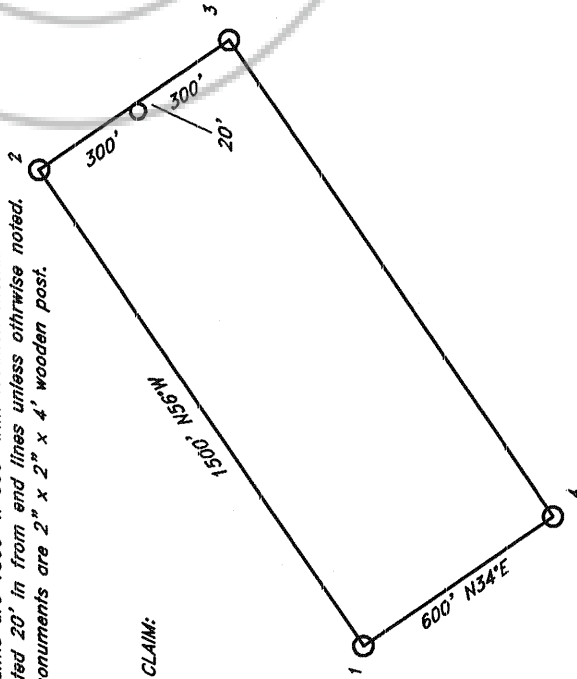
TIE POINT:

The SE corner of CC 31 is approximately located 14,380'
North and 8,265' West of the SE corner of Section 26,
T24N, R49E, M.D.B.M. Eureka County, Nevada

NOTES:

All claims are 1500' x 600' with location monuments
located 20' in from end lines unless otherwise noted.
All monuments are 2" x 2" x 4' wooden post.

TYPICAL CLAIM:



CC 31, 40 LODE MINING CLAIMS

Scale: 1"=500'	Located: Sept. 1, 1997	Drawn By: GH
Nov. 8, 1997		Revised:
By: NORTH AMERICAN EXPLORATION, INC.		
1315 Greg St., Suite 107, Sparks, Nevada 89431		
		Map 1 of 1



Magnetic Declination 15.25°E

500 0 500 1000 FEET

FILED AT THE REQUEST OF *White Knight Gold (US) Inc*
 on *Dec. 1* 19 *97*, at *30* mins, past *9* A.M.
 RECORDS OF EUREKA COUNTY, NEVADA **168983** M. N. REBALEATI, Recorder
 File No. Fee \$ *30.00*

CHAMBERS