

S Corner 1/4 Sec 4

R 49 E

169004

2915'

5805'

1500' N40°E

P107

600' N50°W

T 24 N

LOCATOR:

WHITE KNIGHT GOLD (US) INC.
922-510 West Hastings Street
Vancouver, B.C. V6B1L8

LOCATION:

Section 10 T24N, R49E, M.D.B.M.
Eureka County, Nevada

LOCATION DATE:

Sept. 4, 1997 P 107

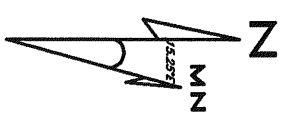
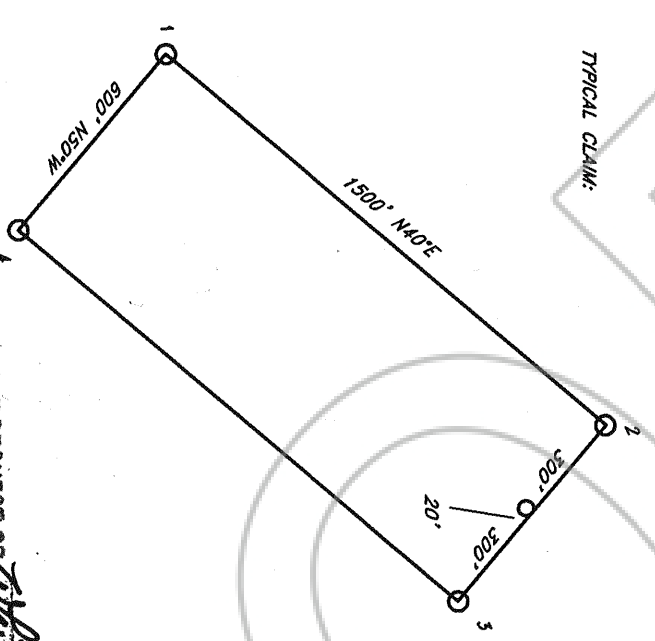
THE POINT:

The NW corner of P 107 is approximately located 2915'
South and 5805' East of the South 1/4 corner Section 4
T24N, R49E, M.D.B.M. Eureka County, Nevada

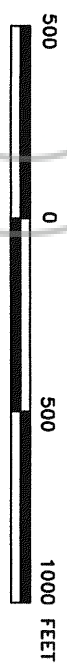
NOTES:

All claims are 1500' x 600' with location monuments
located 20' in from end lines unless otherwise noted.
All monuments are 2" x 2" x 4' wooden post.

TYPICAL CLAIM:



Magnetic Declination 15.25°E



P107 LODGE MINING CLAIM

Scale: 1"=500'	Located: Sept. 4, 1997	Drawn By: GH
Nov. 14, 1997		Revised:

NORTH AMERICAN EXPLORATION, INC.

1315 Greg St., Suite 107, Sparks, Nevada 89431 Map 1 of 1

FILED AT THE REQUEST OF *White Knight Gold*
Dec 1 1997, at 5:59 mins, post 94 M.
RECORDED BY COUNTY, NEVADA M. N. REDBURN, Recorder
Fee \$ 15.00
169004