

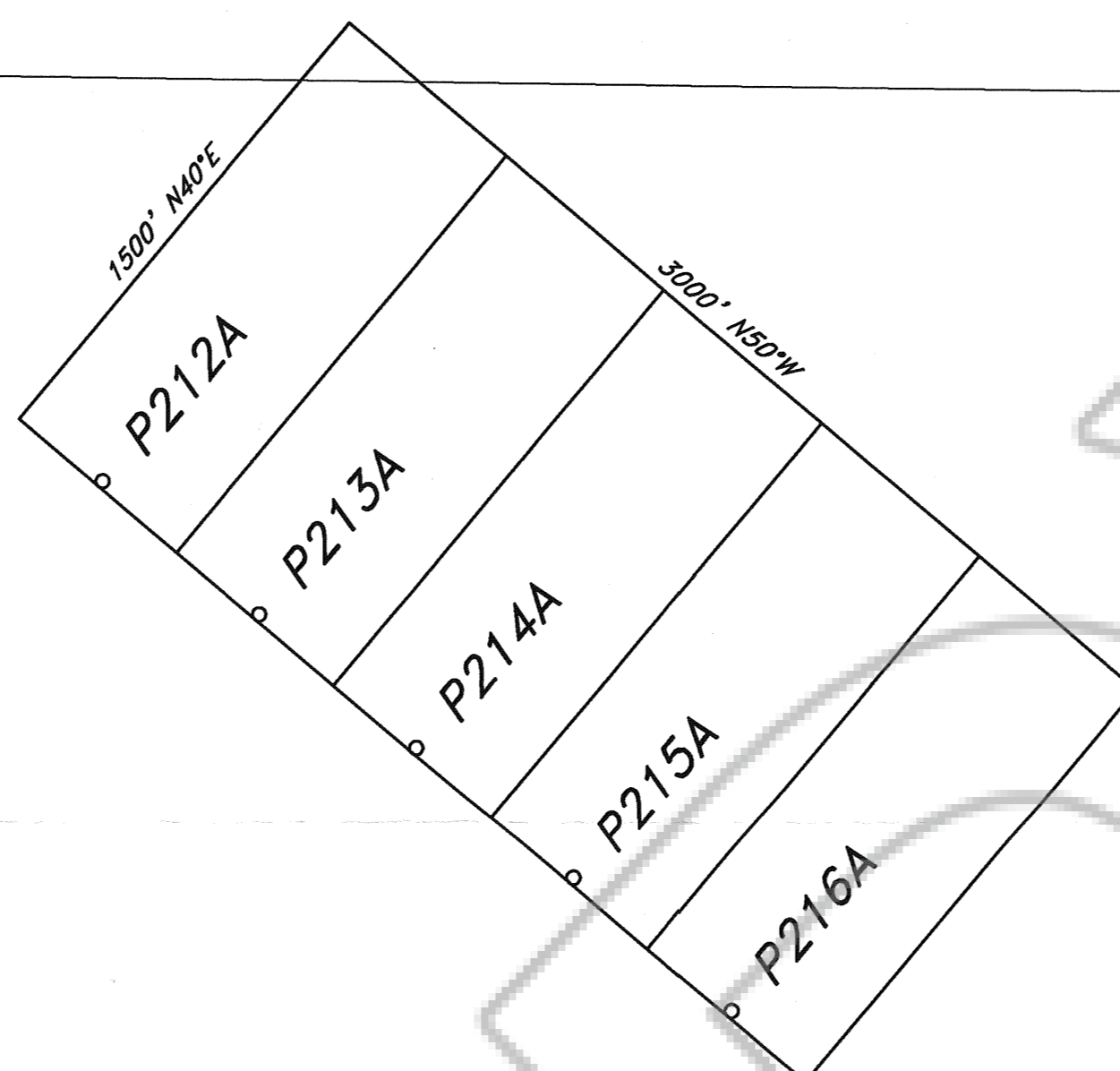
T 25 N
T 24 N

R 49 E

32 33
5 4

33 34
4 3

34 35
3 2



2100'
170'
S 1/4 Corner Sec 4

LOCATOR:

WHITE KNIGHT GOLD (US) INC.
922-510 West Hastings Street
Vancouver, B.C. V6B1L8

LOCATION:

Section 4, T24N, R49E, M.D.B.M.
Section 33, T25N, R49E, M.D.B.M.
Eureka County, Nevada

LOCATION DATE:

Nov. 11, 1997 P212A-216A

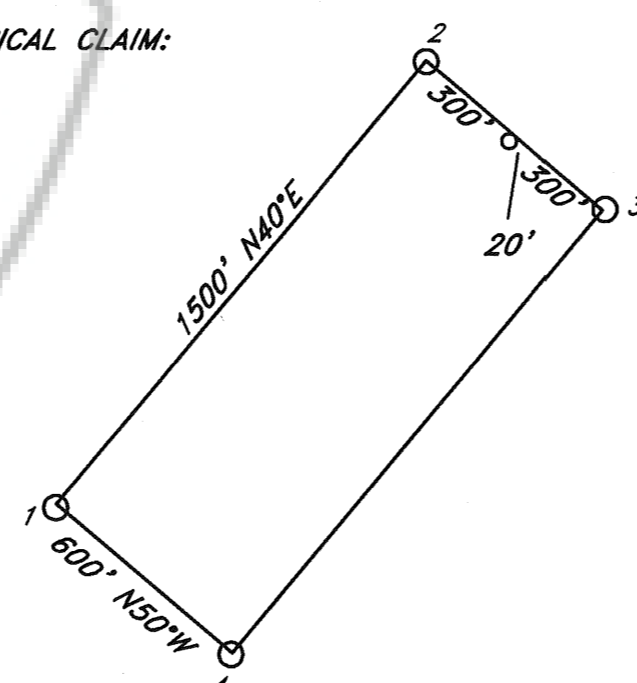
TIE POINT:

The SW corner of P216A is approximately located 2100' North and 170' West of the South 1/4 corner Section 4, T24N, R49E, M.D.B.M. Eureka County, Nevada

NOTES:

All claims are 1500' x 600' with location monuments located 20' in from end lines unless otherwise noted. All monuments are 2" x 2" x 4' wooden post.

TYPICAL CLAIM:



Magnetic Declination 15.25°E

500 0 500 1000 FEET

P212A-P216A LODE MINING CLAIMS

Scale: 1"=500'	Located: Nov. 11, 1997	Drawn By: GH
Nov. 10, 1997		Revised:

By: NORTH AMERICAN EXPLORATION, INC.

1315 Greg St., Suite 107, Sparks, Nevada 89431

Map 1 of 1

FILED AT THE REQUEST OF *White Knight Gold*
 ON *Dec 1* 19 *97* at *03* M.D.B.M.
 RECORDS OF EUREKA COUNTY, NEVADA M. N. REBALEATI, Recorder
 File No. **169010** Fee \$ *25.00*