

169012

South 1/4 corner Section 4

R 49 E

T 24 N

9 10  
16 15

1500' N40°E

P214

600' N50°W

## LOCATOR:

WHITE KNIGHT GOLD (US) INC.  
922-510 West Hastings Street  
Vancouver, B.C. V6B1L8

## LOCATION:

Sections 10, 15, 16 T24N, R49E, M.D.B.M.  
Eureka County, Nevada

## LOCATION DATE:

Sept. 1, 1997

P 214

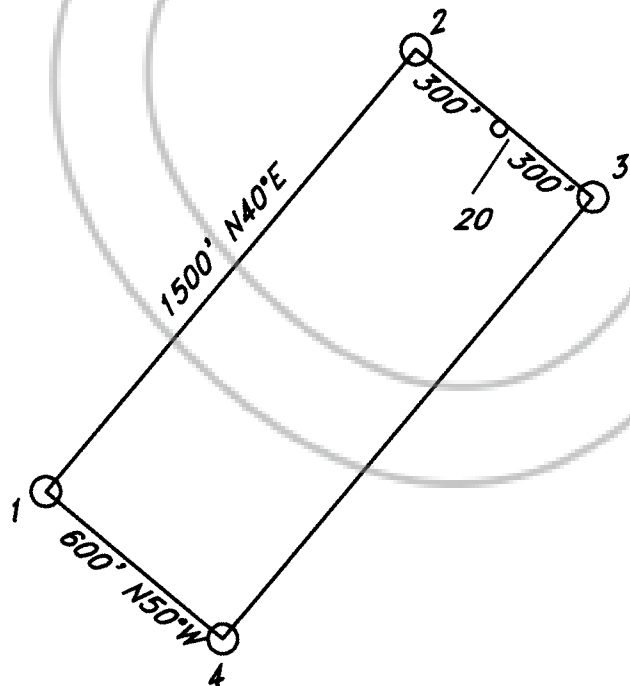
## TIE POINT:

The NW corner of P 214 is approximately located 4825'  
South and 3418' East of the South 1/4 corner Section 4  
T24N, R49E, M.D.B.M. Eureka County, Nevada

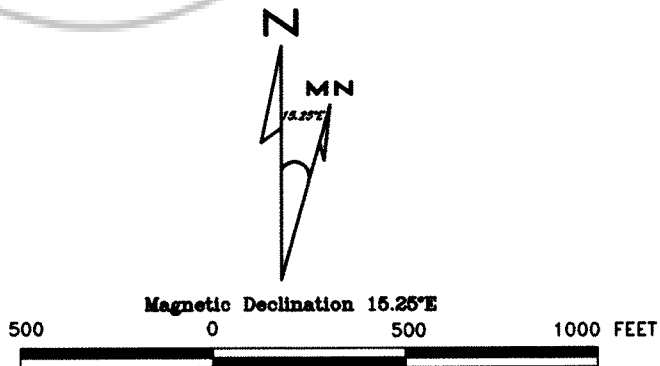
## NOTES:

All claims are 1500' x 600' with location monuments  
located 20' in from end lines unless otherwise noted.  
All monuments are 2" x 2" x 4' wooden post.

## TYPICAL CLAIM:



FILED AT THE REQUEST OF White Knight Gold  
on Dec 1 19 97, at 7 P.M., post 10 A M.  
RECORDS OF EUREKA COUNTY, NEVADA M. N. ROSALETTI, Recorder  
File No. **169012** Fee \$ 15.00



## P214 LODE MINING CLAIM

Scale: 1"=500'

Located: Sept. 1, 1997

Drawn By: GH

Nov. 25, 1997

Revised:

By:

NORTH AMERICAN EXPLORATION, INC.

1315 Greg St., Suite 107, Sparks, Nevada 89431

Map 1 of 1