

250'

24 19
25 30

530'

T 24 N

1500' N56°E

600' N34°W

74

R 49 E
R 50 E

LOCATOR:

WHITE KNIGHT GOLD (US) INC.
922-510 West Hastings Street
Vancouver, B.C. V6B1L8

LOCATION:

Section 25, T24N, R49E, M.D.B.M.
Section 30, T24N, R50E, M.D.B.M.
Eureka County, Nevada

LOCATION DATE:

Sept. 2, 1997 WIN 74

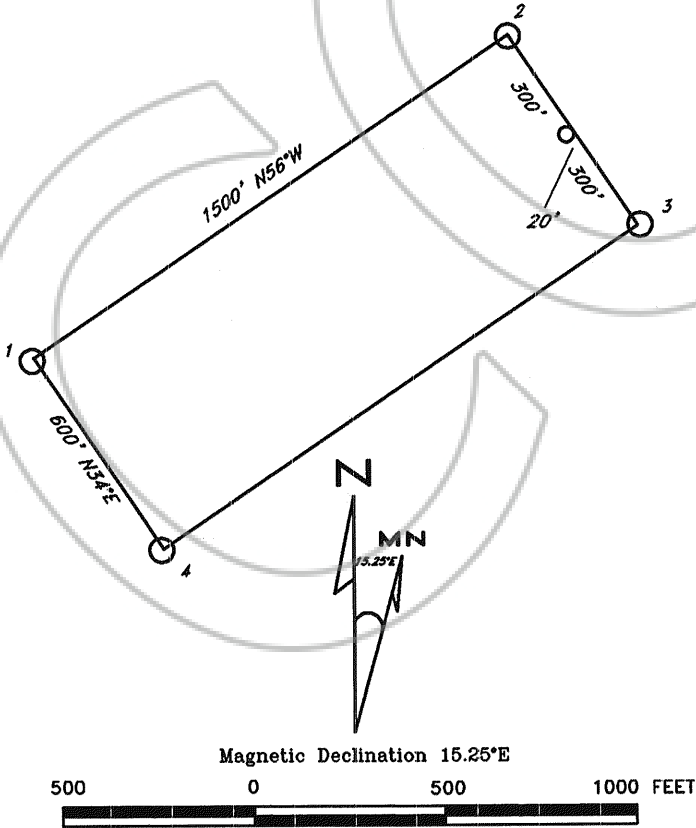
TIE POINT:

The NE corner of WIN 74 is approximately located 250' East
and 530' South of the NE corner of Section 25,
T24N, R49E, M.D.B.M. Eureka County, Nevada

NOTES:

All claims are 1500' x 600' with location monuments
located 20' in from end lines unless otherwise noted.
All monuments are 2" x 2" x 4' wooden post.

TYPICAL CLAIM:



25 30
36 31

WIN 74 LODE MINING CLAIM		
Scale: 1"=500'	Located: Sept. 2, 1997	Drawn By: GH
Nov. 8, 1997		Revised:
By: NORTH AMERICAN EXPLORATION, INC.		
1315 Greg St., Suite 107, Sparks, Nevada 89431		Map 1 of 1

FILED AT THE REQUEST OF White Knight Gold
on Dec 1 19 97, at 9 mins, past 10 AM.
RECORDS OF EUREKA COUNTY, NEVADA M. N. REBALEATI, Recorder
File No. 169014 Fee \$ 15.00