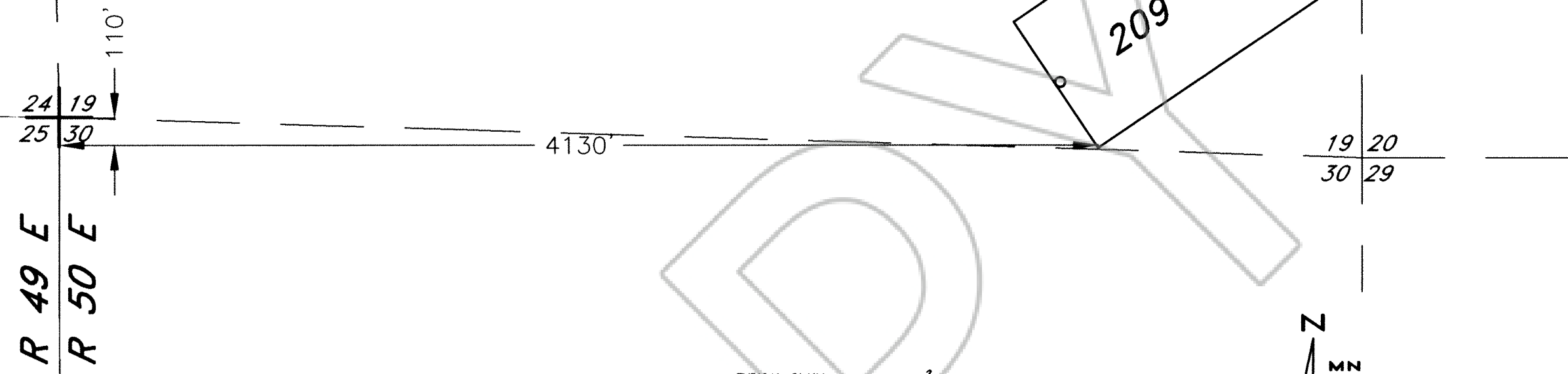


FILED AT THE REQUEST OF White Knight Gold  
 ON Dec 1 19 97, at 11 mins, past 10 A.M.  
 RECORDS OF EUREKA COUNTY, NEVADA M. N. REBALEATI, Recorder  
 File No. 169016 Fee \$ 15.00

T 24 N



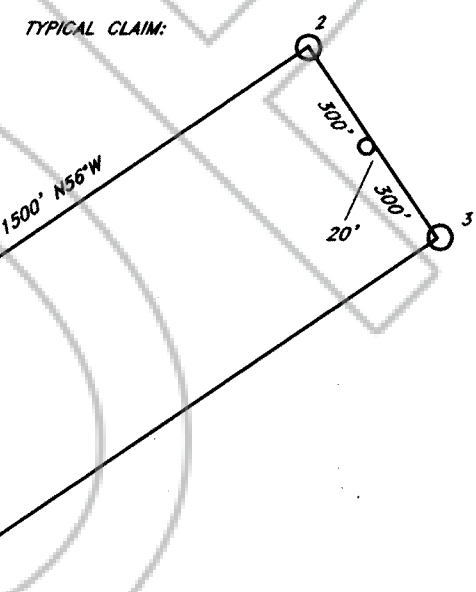
**LOCATOR:**  
 WHITE KNIGHT GOLD (US) INC.  
 922-510 West Hastings Street  
 Vancouver, B.C. V6B1L8

**LOCATION:**  
 Sections 19, 20, T24N, R50E, M.D.B.M.  
 Eureka County, Nevada

**LOCATION DATE:**  
 Sept. 4, 1997 WIN 209

**TIE POINT:**  
 The SW corner of WIN 209 is approximately located 4130' East  
 and 110' South of the NE corner of Section 25,  
 T24N, R49E, M.D.B.M. Eureka County, Nevada

**NOTES:**  
 All claims are 1500' x 600' with location monuments  
 located 20' in from and lines unless otherwise noted.  
 All monuments are 2" x 2" x 4' wooden post.



Magnetic Declination 15.25°E



169016

WIN 209 LODE MINING CLAIM		
Scale: 1"=500'	Located: Sept. 4, 1997	Drawn By: GH
Nov. 15, 1997		Revised:
By: NORTH AMERICAN EXPLORATION, INC.		
1315 Greg St., Suite 107, Sparks, Nevada 89431		Map 1 of 1