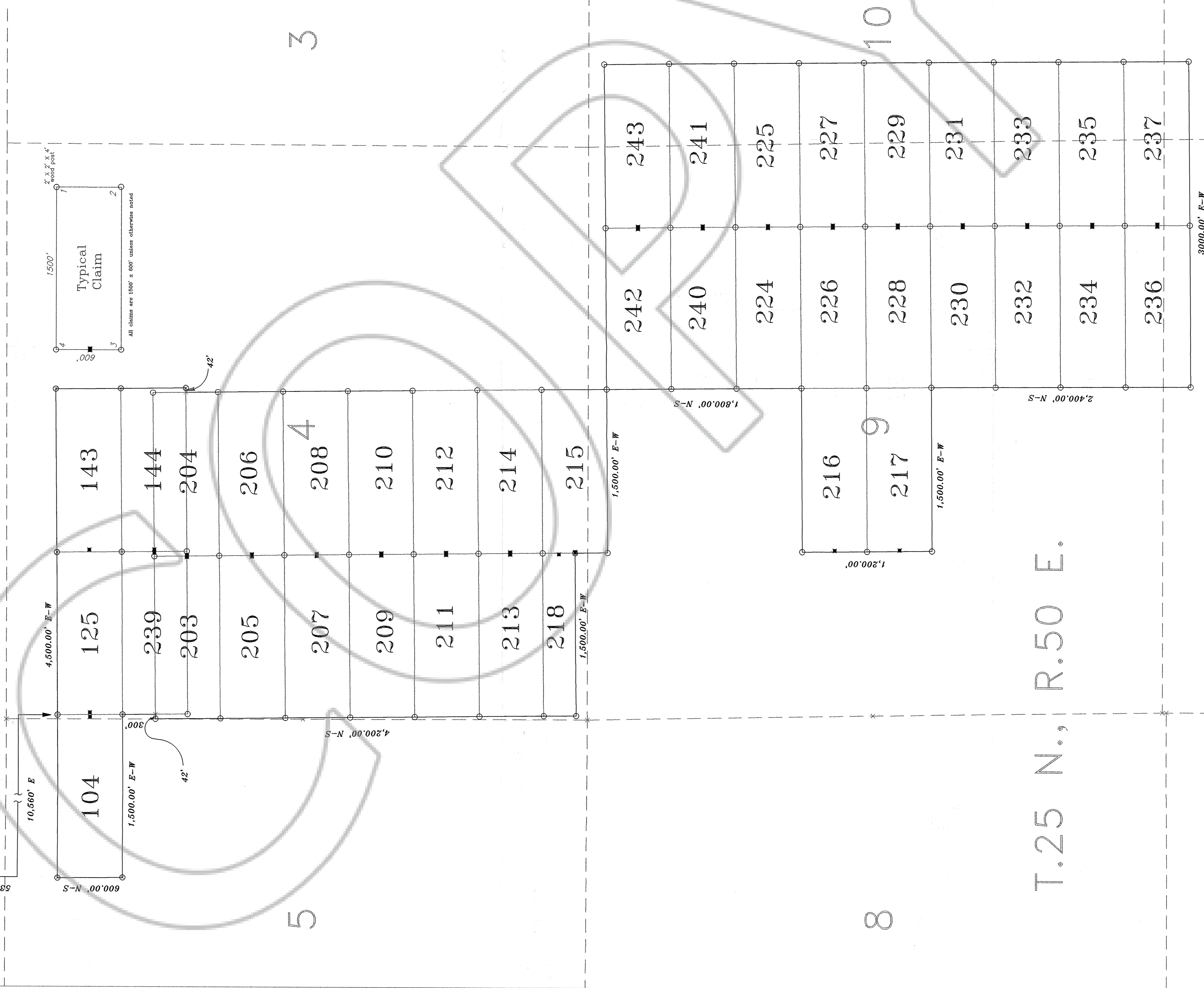


To NW Cor. Section 6
T.25N., R.50E.

Note: the NE corner of RP 104 is approximately 537 feet south and 10560 feet east from the NW corner of Section 6, Township 25 North, Range 50 East, MDB & M.

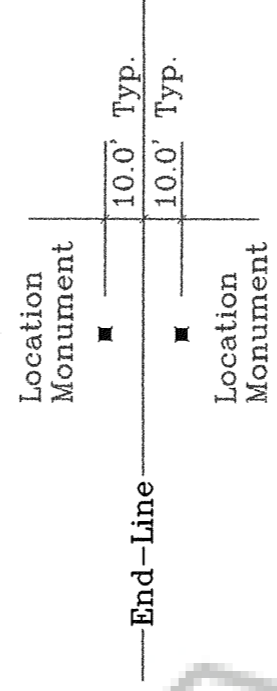


CLAIM MAP

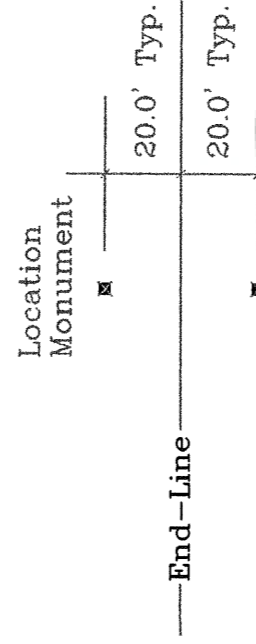
EXPLANATION

- CLAIM CORNER 2x2 WOOD POST
w/ METAL TAG
- LOCATION MONUMENT 2x2 WOOD POST
w/ METAL TAG & LOCATION NOTICE

RP Nos. 203-218, 224-237, 239-243
All Claims are 1500'x600'
Except RP-218 which is 1500'x300'
Location Monuments are Located
20' off End-Lines



RP Nos. 104,125,143, & 144
All Claims are 1500'x600'
Location Monuments are Located
20' off End-Lines



8

9

10

15

16

17



SCALE
U.S. Survey Foot

ROMARCO NEVADA Inc.

CLAIM MAP

RP CLAIMS

Nos. 104,125,143,144,
203-218 & 224-237
239-243

Located in Sections
4,9,10,15 & 16
T.25 N., R.50 E. Mt. Diablo B&M
Eureka County, Nevada

Located By:

Romarco Nevada, Inc.
5450 Riggins Court #2
Reno, Nevada 89502

Drawn By: LDO III Date: 11/20/1997

Revised: Prepared by

801-295-2807

801-295-2506



LOYAL D. OLSON III
CADASTRAL CONSULTANT

1213 N. Main Street Centerville, Utah 84014

FILED BY THE REQUEST OF Romarco Nevada
ON Dec 1 19 97 at 3:10 PM, 11A M.
RECORDS OF EUREKA COUNTY, NEVADA, B.L. RECALLED, C. 2000
R.M. NO. 585-00

169097

460691

New-Plat2.dwg