

R 49 E

169290

1500' N40°E  
500' N50°W  
218A

540'

T 25 N

33 34

T 24 N

4 3

**LOCATOR:**

WHITE KNIGHT GOLD (US) INC.  
922-510 West Hastings Street  
Vancouver, B.C. V6B1L8

**LOCATION:**

Section 33, T25N, R49E, M.D.B.M.  
Eureka County, Nevada

**LOCATION DATE:**

Oct. 31, 1997

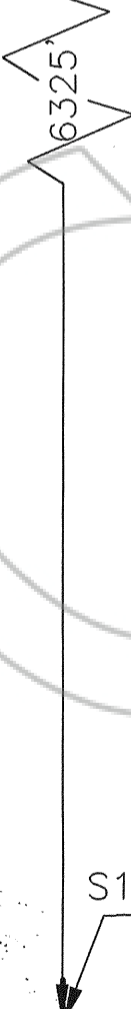
P218A

**TIE POINT:**

The SW corner of P218A is approximately located 6325'  
North and 540' West of South 1/4 corner Section 4,  
T24N, R49E, M.D.B.M. Eureka County, Nevada

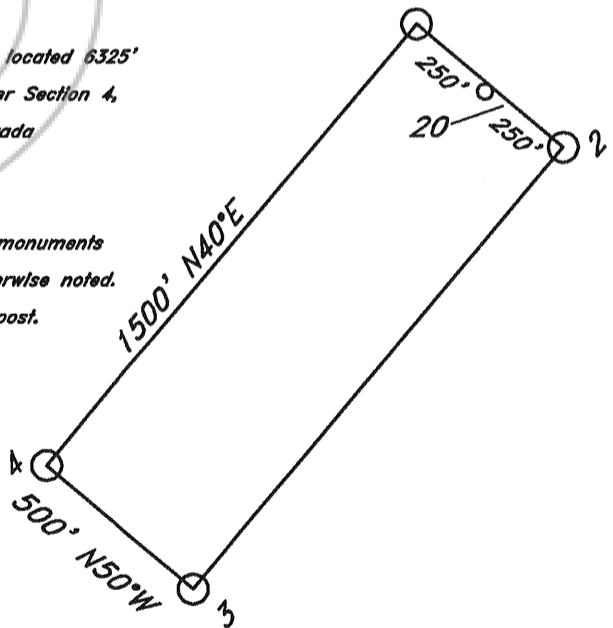
**NOTES:**

All claims are 1500' x 500' with location monuments  
located 20' in from end lines unless otherwise noted.  
All monuments are 2" x 2" x 4' wooden post.



S1/4 Corner  
of Sec. 4

**TYPICAL CLAIM:**



500 0 500 1000 FEET

**P218A LODE MINING CLAIM**

Scale: 1"=500' Located: Oct. 31, 1997 Drawn By: GH  
Dec. 4, 1997 Revised:

By: **NORTH AMERICAN EXPLORATION, INC.**

1315 Greg St., Suite 107, Sparks, Nevada 89431 Map 1 of 1

AT THE REQUEST OF *White Knight Gold*  
*Dec 16* 19 *97*, at *45* mins, past *10:15* A.M.  
RECORDERS of EUREKA COUNTY, NEVADA M. N. REBALEATI, Recorder  
**169290** Fee \$ *15.00* Magnetic Declination 15.25°E

