

BASIS OF ELEVATION: W 1/4 CORNER OF SECTION 28  
TAKEN AS 84.0 FROM U.S.G.S. QUAD MAP DEVON PEAK, NEVADA.  
ADD 5900' TO SHOW ELEVATION TO OBTAIN MEAN SEA LEVEL.

NW CORNER OF SECTION 21 NOT FOUND  
LOCATION DETERMINED FROM PARCEL MAP  
FILED BY HARLAN HILES ON SEPT. 7, 1989.

8" WATER LINE

BLM

THIRD STREET

6" WATER LINE

BLM

N 89°33'30" E 2677.00'

WELL

BLM

SECTION LINE

FROM HWY. R/W TO NW 1/4 CORNER  
OF SECTION 21  
N. 89° 33'30" E, 108.7'

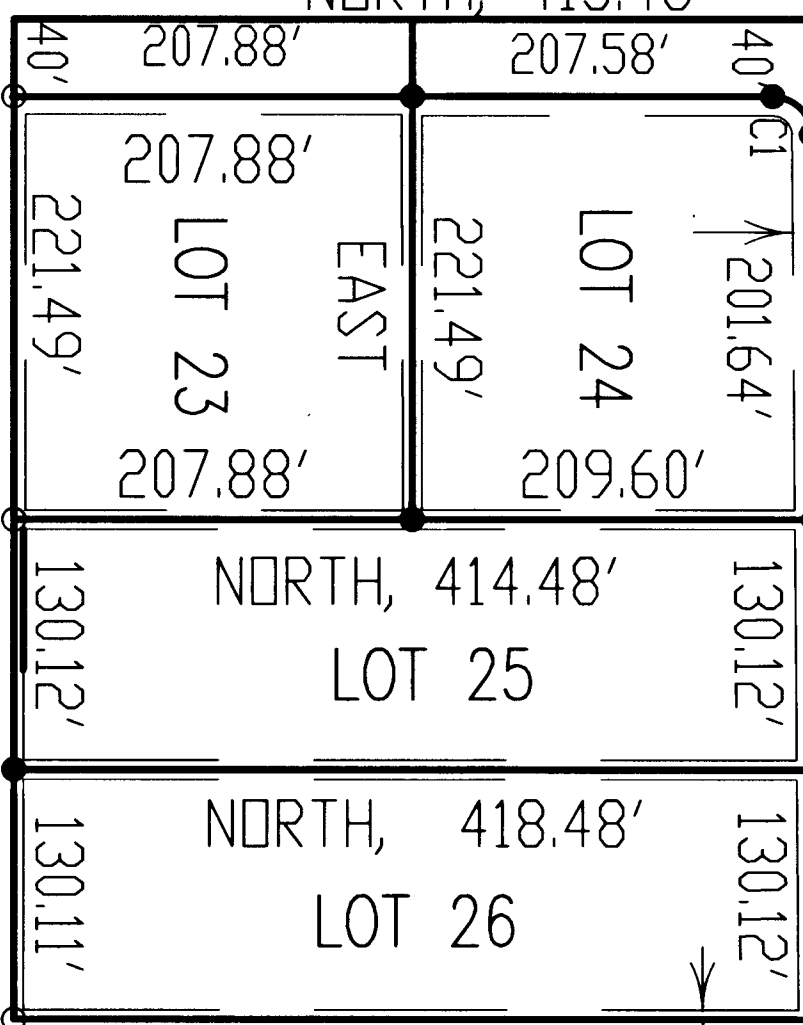
15'  
THIRD STREET

N 89°33'30" E

7 1/2'

CHEYENNE DRIVE

NORTH, 415.46'



EAST, 521.72'  
EASEMENT DETAIL  
N.T.S.

- EASEMENTS
- 1- 15' P.U. & D.E. STREET SIDE OF ALL LOTS
  - 2- 7.5' P.U. & D.E. EACH SIDE OF THE SIDE LOT LINE & REAR LOT LINES
  - 3- ALL STREETS CONTAIN PUBLIC ACCESS, PUBLIC UTILITY & DRAINAGE EASEMENTS

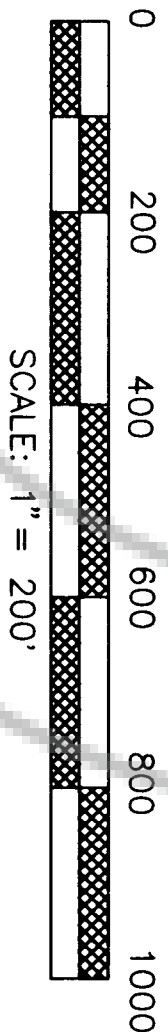
#### LEGEND

- PROPERTY CORNERS
  - FOUND 5/8" REBAR W/ P.L.S. # 2161 CAP
  - SET 5/8" REBAR W/ P.L.S. # 2161 CAP
  - × NOTHING FOUND NOTHING SET
- 59.1' ELEVATION - ADD 5900 TO OBTAIN TRUE ELEVATION ABOVE SEA LEVEL.

#### NOTE:

LOTS SHOWN ARE NOT LOCATED WITHIN THE 100 YEAR FLOOD PLAIN.  
ALL ROADWAYS CONTAIN DRAINAGE & PUBLIC UTILITY EASEMENTS  
ALL ROADWAYS SHOWN ON THIS MAP WHICH ARE NOT AT THIS TIME  
ACCEPTED AND MAINTAINED BY EUREKA COUNTY AND/OR THE STATE  
OF NEVADA WILL BE MAINTAINED BY THE DEVELOPER UNTIL SUCH  
TIME AS THESE ROADWAYS ARE ACCEPTED BY THE COUNTY.

BASIS OF BEARING: SOUTH SECTION LINE OF SECTION 21,  
T. 20 N., R. 53 E., M. D. B. & M. TAKEN AS  
N. 88°17'00" E. FROM 1933 GLO PLAT.



#### COUNTY RECORDER'S CERTIFICATE

FILE NO. 164692 FILED AT THE REQUEST OF  
Ruby Hill Ranch, LLC ON THE 19 DAY  
OF December, 1992.  
AT 47 MINUTES PAST 11 O'CLOCK A.M.  
M. N. Rebaletch, County Recorder  
EUREKA COUNTY RECORDER

#### PARCEL MAP NO. 2

FOR  
RUBY HILL RANCH, LLC  
OF THE FIRST DIVISION OF  
PARCEL MAP FILE NO. 164692  
PARCELS B1 AND B2  
EUREKA COUNTY RECORDER  
LOCATED WITHIN SECTION 21,  
T. 20 N., R. 53 E., M.D.B. & M.  
EUREKA COUNTY, NEVADA

WILBUR AND MARLENE BLACK PROPERTY

BRINKLEY  
HASTING  
PROPERTY  
4.455  
ACRES

PARCEL  
A3  
2.50 ACRES

PARCEL A2  
2.50 ACRES

PARCEL A1  
2.50 ACRES

8" WATER  
LINE

RUBY HILL RANCH, L.L.C. PROPERTY

EXISTING PARCEL A4  
32.48 ACRES  
PARCEL MAP NO. 165021  
FILED 11-6-96

EXISTING 80' PUBLIC ACCESS,  
PUBLIC UTILITY AND  
DRAINAGE EASEMENT AS  
SHOWN ON PARCEL MAP  
NO. 165021, FILED WITH THE  
EUREKA COUNTY RECORDER.  
(40' EACH SIDE OF PARCEL  
LINE)

WILLIAM A. CRANE PROPERTY

PARCEL D  
DIVISION OF LAND INTO  
LARGE PARCELS  
MAP NO. 164691  
EUREKA COUNTY RECORDER

WILLIAM A. CRANE PROPERTY

PARCEL C  
DIVISION OF LAND INTO  
LARGE PARCELS  
MAP NO. 164691  
EUREKA COUNTY RECORDER

ROADWAY EASEMENT CONNECTS  
TO FRONTIER STREET AS SHOWN  
ON THE MAP FILED IN THE EUREKA  
COUNTY RECORDER'S OFFICE  
UNDER FILE NO. 164691.

LINE	BEARING	DISTANCE
L1	N 10°00'00" E	27.79'
L2	N 89°33'30" E	50.00'
L3	N 90°00'00" E	33.00'

C1 DELTA = 89°33'30" RADIUS = 20' ARC = 3126' TAN. = 19.85'  
LONG CHORD = N 44°46'45" E, 2818'

T.20N., R.53E., M.D.B.&M.  
EUREKA COUNTY, NEVADA

#### LOT AREA DATA

LOT 23	1.25 ACRES GROSS	(54,357 SQ. FT.)
	1.25 ACRES NET	(54,357 SQ. FT.)
LOT 24	1.25 ACRES GROSS	(54,543 SQ. FT.)
	1.06 ACRES NET	(46,149 SQ. FT.)
LOT 25	1.25 ACRES GROSS	(54,385 SQ. FT.)
	1.25 ACRES NET	(54,385 SQ. FT.)
LOT 26	1.25 ACRES GROSS	(54,515 SQ. FT.)
	1.25 ACRES NET	(54,515 SQ. FT.)