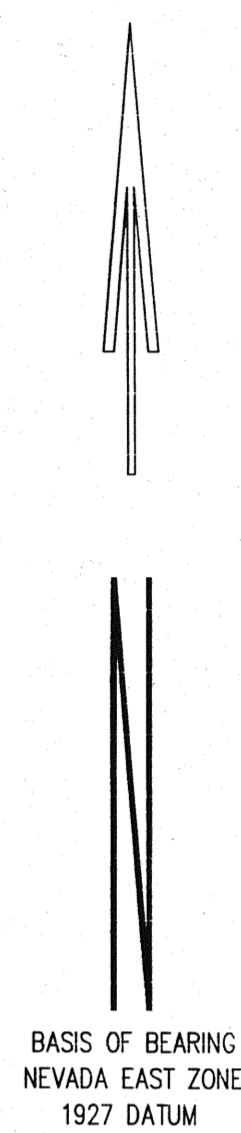
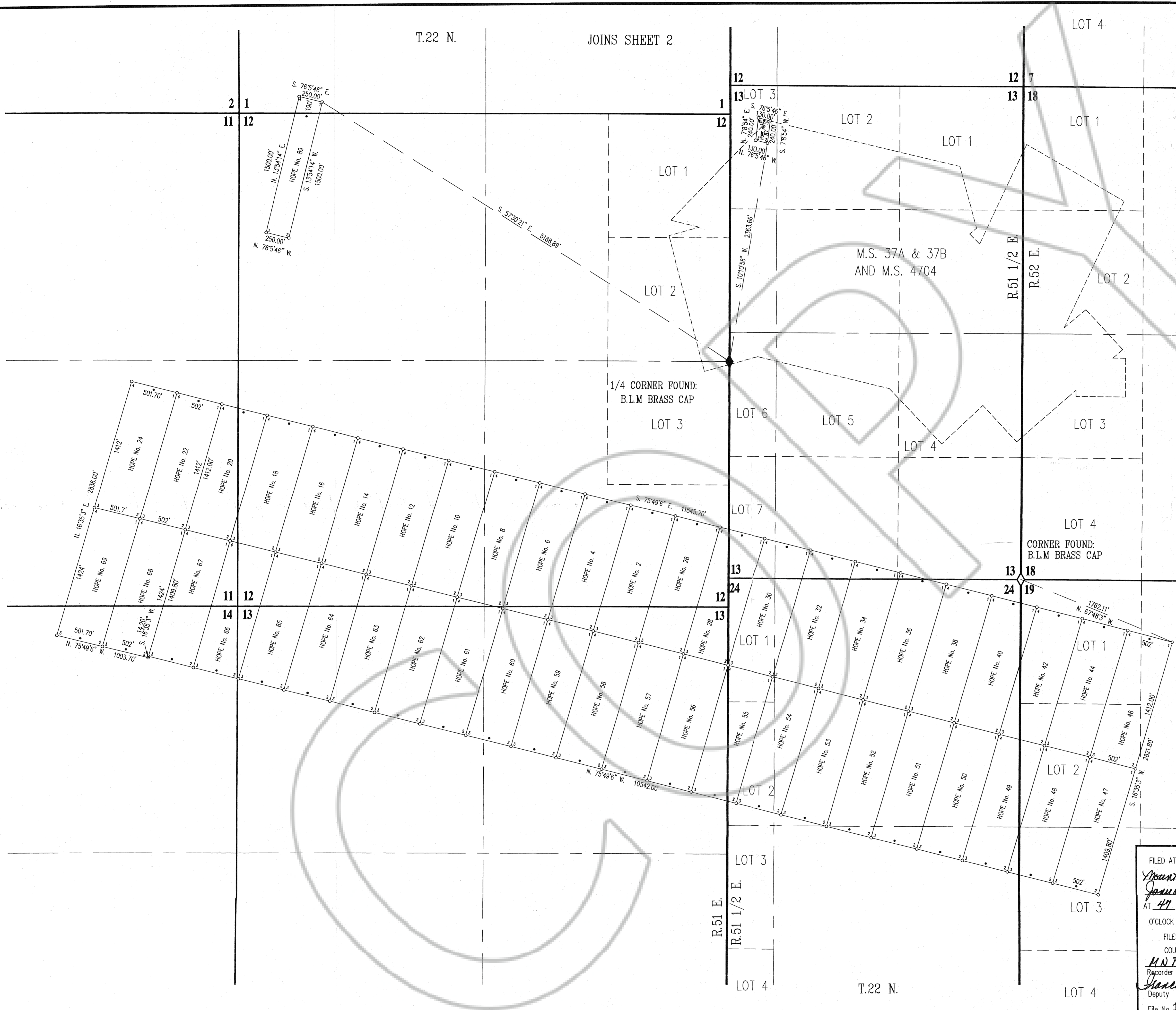
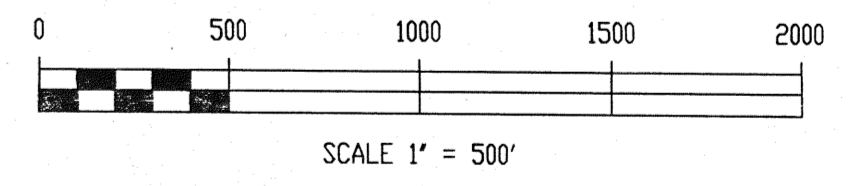


T.22 N. JOINS SHEET 2



NOTES

- All Lode claims are 600 feet by 1500 feet with Location Monuments 25 feet from the end lines on the Bowser claims and 30 feet from the end lines on the Hope claims unless otherwise noted.
- All corners and location monuments are 4" x 4" x 4 1/2" long wood posts with aluminum tags denoting their position.
- The claims were located by: MOUNT HOPE MINES, INC. 945 West Kenyon Ave., Suite 100 Englewood, CO. 80110
- Bowser Nos. 22, 24, 26, 28, 30, 46, 48, 50, 52, 54 and 56 were located on October 15th, 1997. Hope Nos. 87 and 89 were located on October 17th, 1997. Hope Nos. 2, 4, 6, 8, 10, 12, 14, 16, 18, 20, 22, 24, 26, 28, 30, 32, 34, 36, 38, 40, 42, 44 and 46-51 were located on October 22nd, 1997. Hope Nos. 52-69 were located on October 23rd, 1997.
- There are a total of 59 claims.

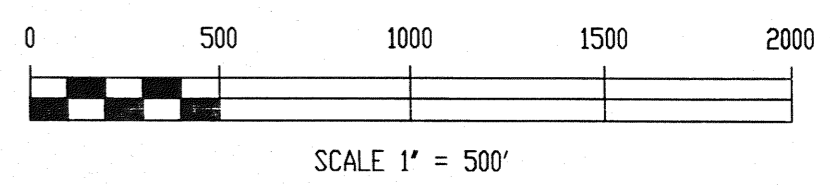
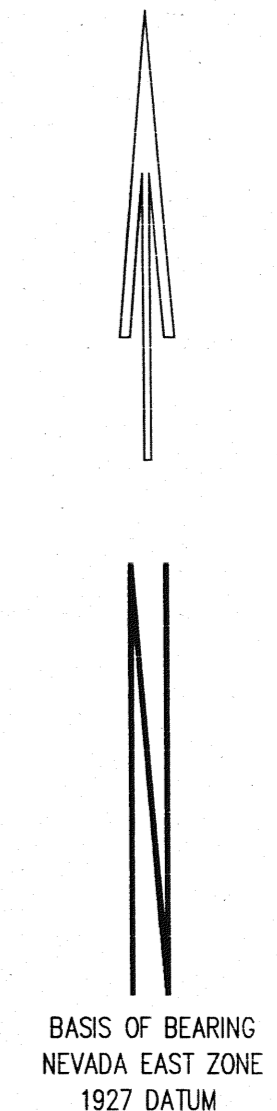
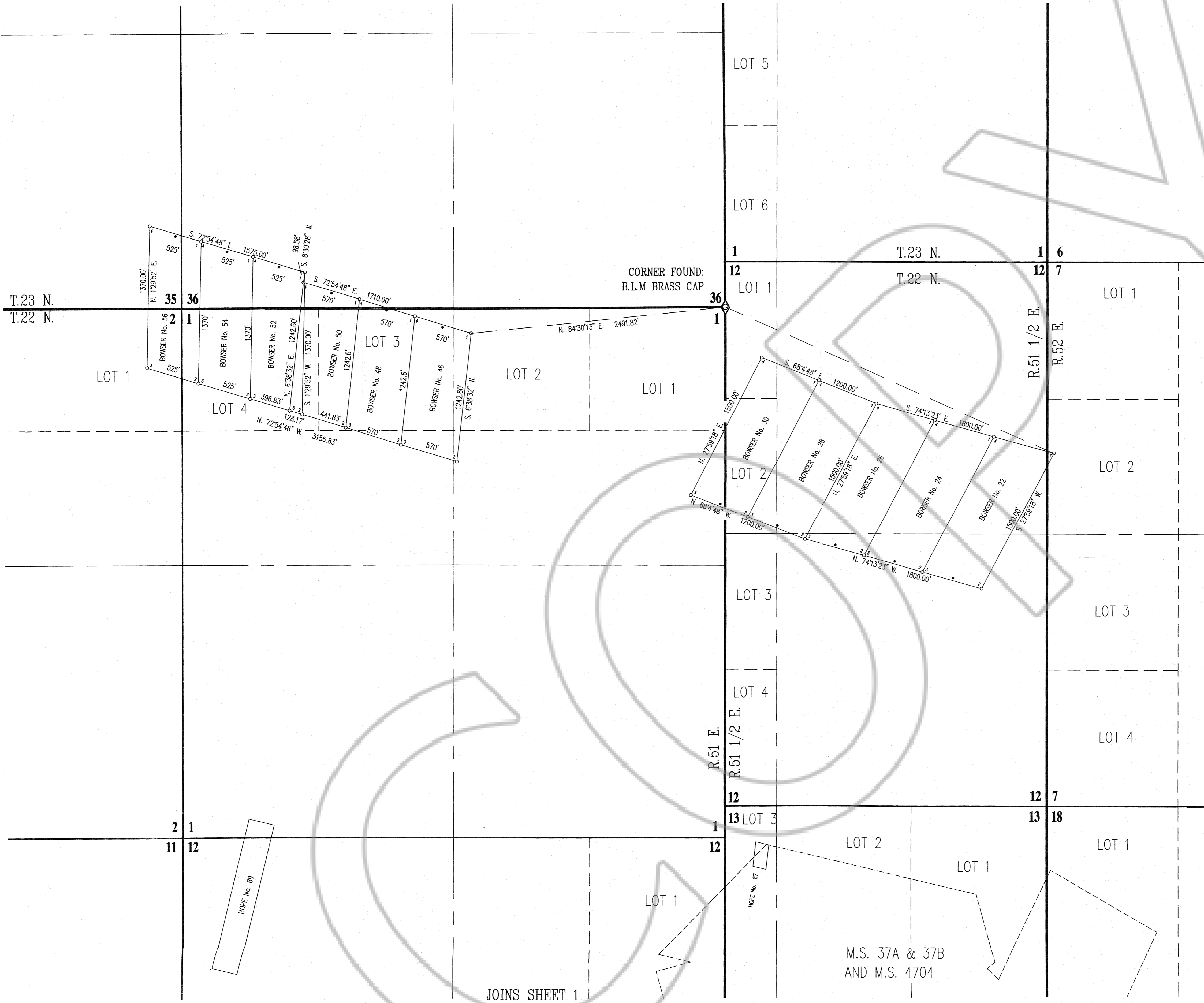


SHEET No. 1 OF 2 SHEETS JOB #9710106M

FILED AT THE REQUEST OF
Mount Hope Mines
 January 6, 1998
 AT 47 MIN PAST
 O'CLOCK 1:00
 FILES OF EUREKA
 COUNTY, NEVADA
M N Rebalet
 Recorder
Sharon Bennett
 Deputy
 File No. **169542**
 182

BFI BOUNDY & FORMAN, INC. DEC., 1997.
 P.O. Box 150, 298 E. 11th ST., ELY, NEVADA, (702)289-8835
 CIVIL ENGINEERS, LAND & WATER RIGHT SURVEYORS

MAP SHOWING
**BOWSER AND HOPE
 LODGE MINING CLAIMS**
 LOCATED BY
MOUNT HOPE MINES, INC.
 IN
 Ts.22 & 23 N., Rs.51, 51 1/2 & 52 E., M.D.B. & M.
 MT. HOPE MINING DISTRICT, EUREKA COUNTY, NEVADA



SHEET No. 2 OF 2 SHEETS JOB #9710106M

FILED AT THE REQUEST OF
Mount Hope Mines
January 6, 1992
AT 47 MIN PAST
O'CLOCK 1:00
FILES OF EUREKA
COUNTY, NEVADA
M.W. Rebeals
Recorder
Sharon Stewart
Deputy
File No. 169542
292

BFI BOUNDY & FORMAN, INC. DEC., 1997.
P.O. Box 150, 298 E. 11th ST., ELY, NEVADA, (702)289-8835
CIVIL ENGINEERS, LAND & WATER RIGHT SURVEYORS
MAP SHOWING
**BOWSER AND HOPE
LODE MINING CLAIMS**
LOCATED BY
MOUNT HOPE MINES, INC.
IN
Ts.22 & 23 N., Rs.51, 51 1/2 & 52 E., M.D.B. & M.
MT. HOPE MINING DISTRICT, EUREKA COUNTY, NEVADA

JOINS SHEET 1

M.S. 37A & 37B
AND M.S. 4704