

TRUSTEE OF EUREKA TOWNSITE CERTIFICATE

KNOW ALL MEN BY THESE PRESENTS, THAT EUREKA TOWNSITE, THE UNDERSIGNED BEING TRUSTEE OF A PORTION OF THE NE 1/4 OF SECTION 23, T. 19 N., R. 53 E., M.D.M., DOES HEREBY COME TO THE PERFECTION AND PLING OF THIS MAP, THAT I DO HEREBY OFFER WITHOUT RESERVATION FOR STREET AND PUBLIC USE ALL THE LINES DELINEATED FOR SUCH PURPOSES ON THIS MAP IN WITNESS WHEREOF I HAVE HERETO SET MY HAND AND SEAL OF OFFICE ON THIS 24th DAY OF OCTOBER, 1998.

[Signature]
 WALTER H. HOLT, DISTRICT JUDGE, 7TH DISTRICT
 TRUSTEE, EUREKA TOWNSITE

NO. 2-1/2" BRASS CAP
 1 1/4" 3/16" 1935

BASIS OF BEARING
 THE BASIS OF BEARING FOR THIS SURVEY IS THE NORTH LINE OF THE NORTHEAST 1/4 OF SECTION 23, T. 19 N., R. 53 E., M.D.M., AS SHOWN ON REFERENCE DOCUMENTS A & B. THE BEARING OF SAID LINE BEING S 89°54' W.

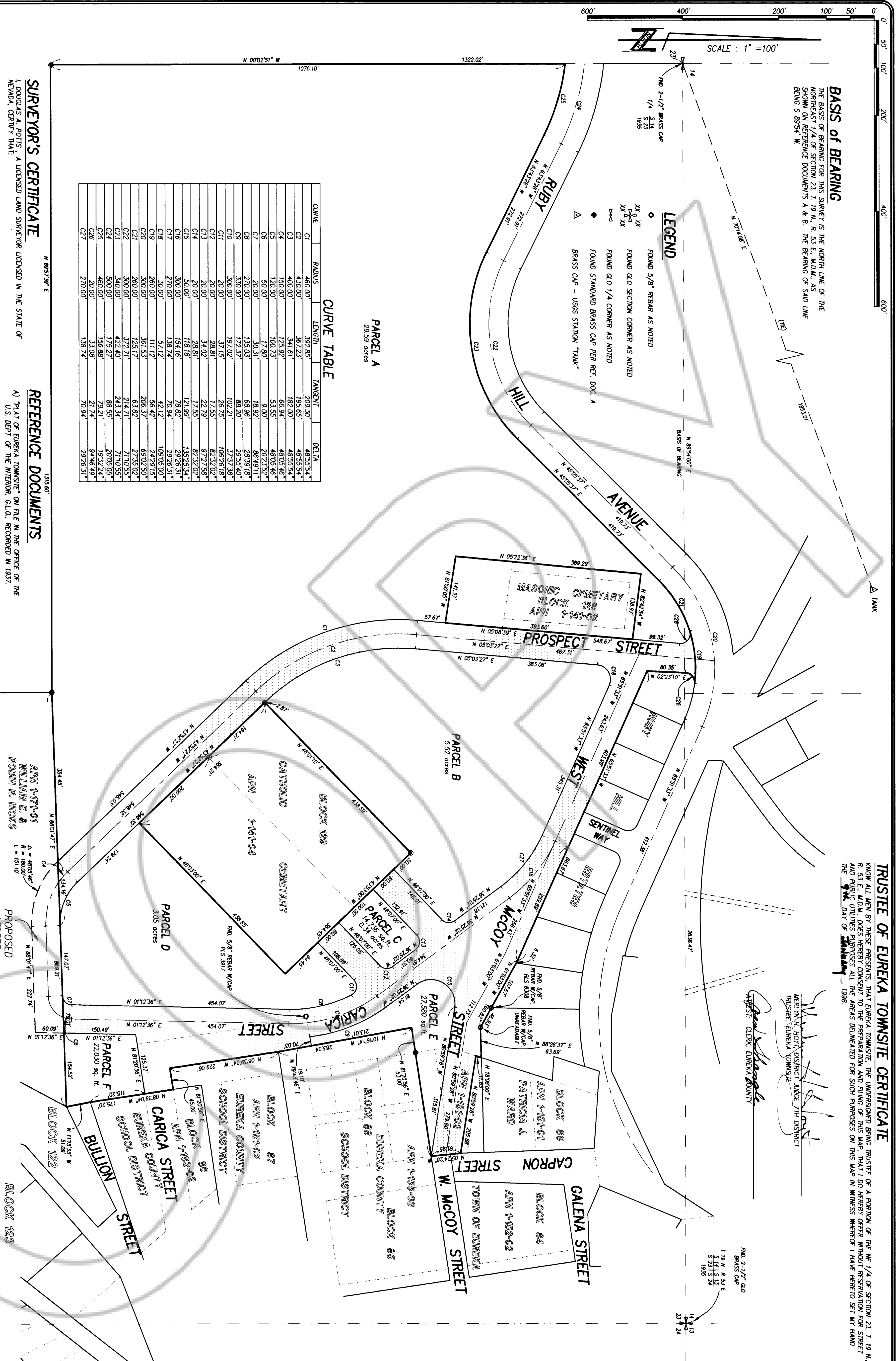
SCALE: 1" = 100'

LEGEND

- FOUND 5/8" REBAR AS NOTED
- XX, XX FOUND GLO SECTION CORNER AS NOTED
- XX, XX FOUND GLO 1/4 CORNER AS NOTED
- FOUND STANDARD BRASS CAP PER REF. DOC. A
- △ BRASS CAP - USSS STATION "TANK"

CURVE TABLE

CURVE	RADIUS	LENGTH	TANGENT	DELTA
C1	460.00'	392.85'	209.30'	48°55'54"
C2	430.00'	367.23'	195.65'	48°55'54"
C3	400.00'	341.61'	182.00'	48°55'54"
C4	350.00'	295.99'	158.35'	48°55'54"
C5	300.00'	250.37'	134.70'	48°55'54"
C6	250.00'	204.75'	111.05'	48°55'54"
C7	200.00'	159.13'	87.40'	48°55'54"
C8	150.00'	113.51'	63.75'	48°55'54"
C9	100.00'	67.89'	40.10'	48°55'54"
C10	50.00'	22.27'	13.45'	48°55'54"
C11	20.00'	8.72'	5.18'	48°55'54"
C12	10.00'	4.36'	2.59'	48°55'54"
C13	5.00'	2.18'	1.29'	48°55'54"
C14	2.00'	0.87'	0.51'	48°55'54"
C15	1.00'	0.44'	0.26'	48°55'54"
C16	0.50'	0.22'	0.13'	48°55'54"
C17	0.25'	0.11'	0.06'	48°55'54"
C18	0.125'	0.05'	0.03'	48°55'54"
C19	0.0625'	0.025'	0.015'	48°55'54"
C20	0.03125'	0.0125'	0.0075'	48°55'54"
C21	0.015625'	0.00625'	0.00375'	48°55'54"
C22	0.0078125'	0.003125'	0.001875'	48°55'54"
C23	0.00390625'	0.0015625'	0.0009375'	48°55'54"
C24	0.001953125'	0.00078125'	0.00046875'	48°55'54"
C25	0.0009765625'	0.000390625'	0.000234375'	48°55'54"
C26	0.00048828125'	0.0001953125'	0.0001171875'	48°55'54"
C27	0.000244140625'	0.00009765625'	0.00005859375'	48°55'54"



SURVEYOR'S CERTIFICATE

I, DONALD A. POTTS, A LICENSED LAND SURVEYOR LICENSED IN THE STATE OF NEVADA, CERTIFY THAT:

- 1) THIS PLAT REPRESENTS THE RESULTS OF A SURVEY CONDUCTED UNDER MY DIRECT SUPERVISION AT THE INSTANCE OF EUREKA COUNTY PUBLIC WORKS.
- 2) THE LANDS SURVEYED ARE WITHIN SECTION 23, TOWNSHIP 19 NORTH, RANGE 53 EAST, MERIDIAN, AND THE SURVEY WAS COMPLETED IN SEPTEMBER, 1997.
- 3) LOCAL ORDINANCES IN EFFECT ON THE DATE THAT THE GOVERNING BODY GAVE ITS FINAL APPROVAL, OCCUPY THE POSITIONS INDICATED AND ARE OF SUFFICIENT NUMBER AND DURABILITY.

REFERENCE DOCUMENTS

- A) PLAT OF EUREKA TOWNSITE ON FILE IN THE OFFICE OF THE U.S. DEPT. OF THE INTERIOR, G.L.O., RECORDED IN 1937.
- B) MAP OF EUREKA COMPILED BY CHILTON ENGINEERING.
- C) TANGENT MAP OF LOT 1, BLOCK 88, FILED DECEMBER 21, 1981, OFFICIAL RECORDS OF EUREKA COUNTY, FILE NO. 82889, STATE OF NEVADA.
- D) "AMENDED PLAT OF RUBY HILL, ESTATES SUBDIVISION," FILED MAY 15, 1985, OFFICIAL RECORDS OF EUREKA COUNTY, FILE NO. 98941, STATE OF NEVADA.
- E) RECORD OF SURVEY OF THE TOWNSHIP OF EUREKA, FILED OCTOBER 24, 1996, OFFICIAL RECORDS OF EUREKA COUNTY, FILE NO. 169427, STATE OF NEVADA (MAP SLOTT 125-B).
- F) RECORD OF SURVEY OF APR 1-171-01 FOR EUREKA COUNTY, FILED OCTOBER 24, 1996, OFFICIAL RECORDS OF EUREKA COUNTY, FILE NO. 164852, STATE OF NEVADA (MAP SLOTT 137-B).

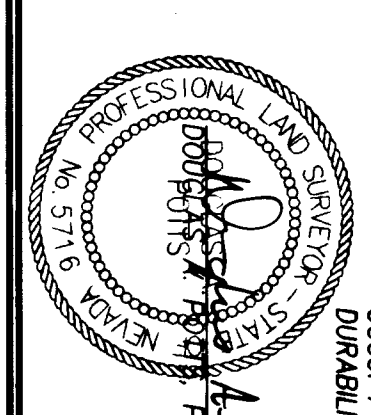
COUNTY COMMISSION APPROVAL

EUREKA COUNTY HAS REVIEWED AND APPROVED THE MAP AT THEIR MEETING HELD ON THE 20th DAY OF January, 1998, AT THE LOCATION OF THE STREETS AND ROADS AS SHOWN HEREON AND HEREBY ACCEPTED.

[Signature]
 DONALD A. POTTS, COUNTY COMMISSIONER
 EUREKA COUNTY, NEVADA

RECORDER'S CERTIFICATE

FILED AT THE REQUEST OF EUREKA COUNTY PUBLIC WORKS
 ON THE 20th DAY OF January, 1998
 AT 3:18 PM, PAST 4 P.M. IN THE
 OFFICIAL RECORDS OF EUREKA COUNTY,
 NEVADA.
 FILE NUMBER: 169594
 FEE: \$10.00



1-6-98
 DATE

[Signature]
 DATE

RECORD OF SURVEY
 RIGHT-OF-WAY DEDICATION
 FOR
EUREKA COUNTY PUBLIC WORKS
 A PORTION OF THE NE 1/4 OF SECTION 23,
 T. 19 N., R. 53 E., M.D.M.
 EUREKA TOWNSITE, EUREKA COUNTY, NEVADA
 LINDSAY AND ASSOCIATES
 DATE: January 3, 1998
 JOB NO.: 3832.015
 SHEET 1 OF 1