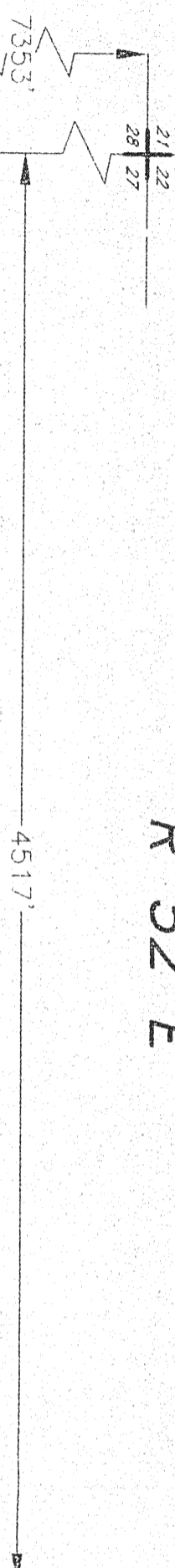


R 52 E

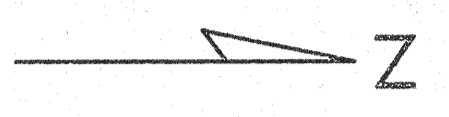
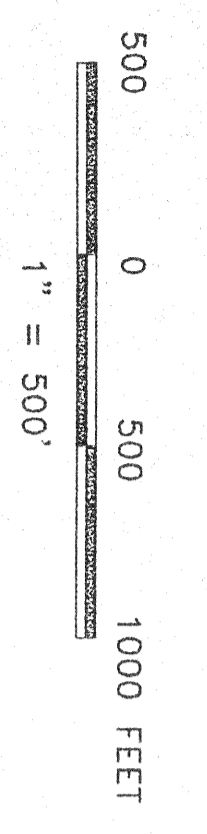
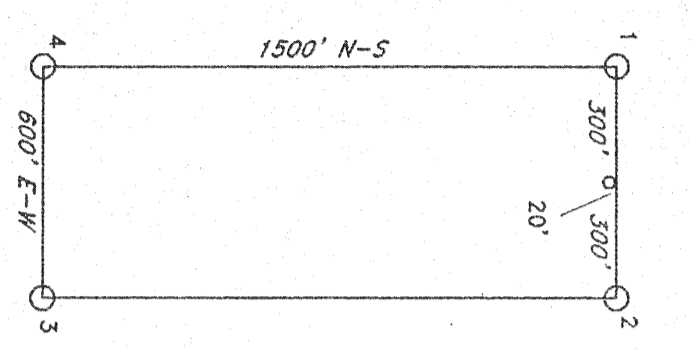


**LOCATOR:**  
WHITE KNIGHT GOLD (U.S.), INC.  
1020 West Main Street, Suite 312  
Boise, Idaho 83702

**NOTES:**  
All claims measure 1500' x 600'  
All monuments are 1 1/2" x 1 1/2" x 4' wood posts  
with metal tags.  
Section lines taken from professional diagram  
All location monuments shown as "o", are set 20' into claims.

**TIE:**  
The NE corner of YAH 118 is 5853' South and 4517' East  
from the NW corner of Section 27, T20N, R52E

**LOCATION DATES:**  
1-22-98 YAH 118, 119, 131-140  
1-23-98 YAH 120-130



**YAH (118-140)  
LODE MINING CLAIMS**

Unsurveyed Sections 2, 11, 14, T19N, R52E  
Unsurveyed Section 34 T20N, R52E  
Eureka County, Nevada

1500' N-S		2400' E-W		4500' E-W		4500' N-S		600' E-W	
131	132	133	134	135	136	137	138	139	140
1500' N-S		2400' E-W		4500' E-W		4500' N-S		600' E-W	
126	127	128	129	130	122	123	124	125	
1500' N-S		2400' E-W		4500' E-W		4500' N-S		600' E-W	
121	120	119	118						

FILED AT THE REQUEST OF White Knight Gold  
on Mar 26 19 98 at 2:53 pm, per LD dh,  
RECORDS OF EUREKA COUNTY, NEVADA. M. N. REGALADO, Recorder  
File No. 6793 Fee \$ 315.00