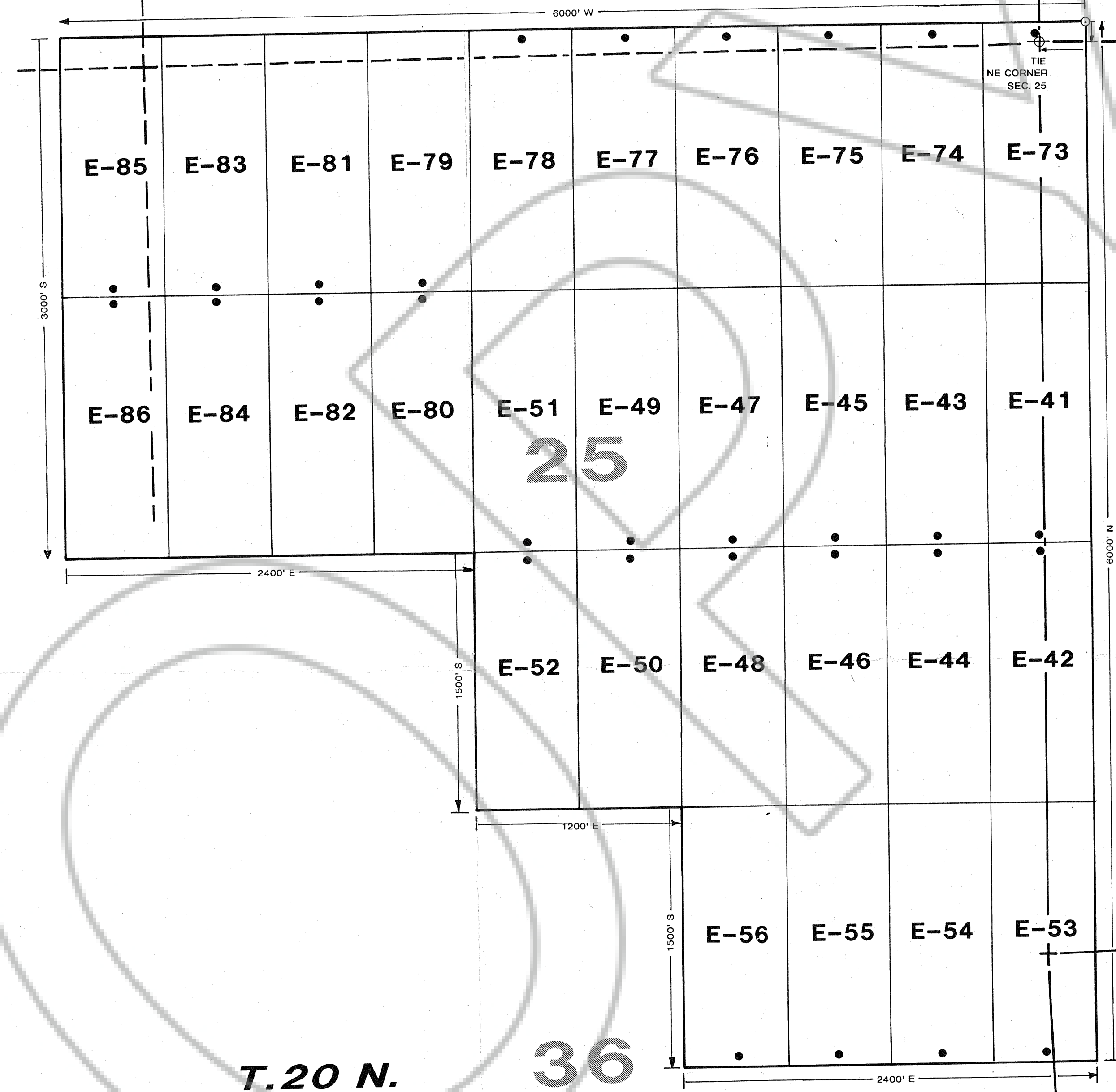


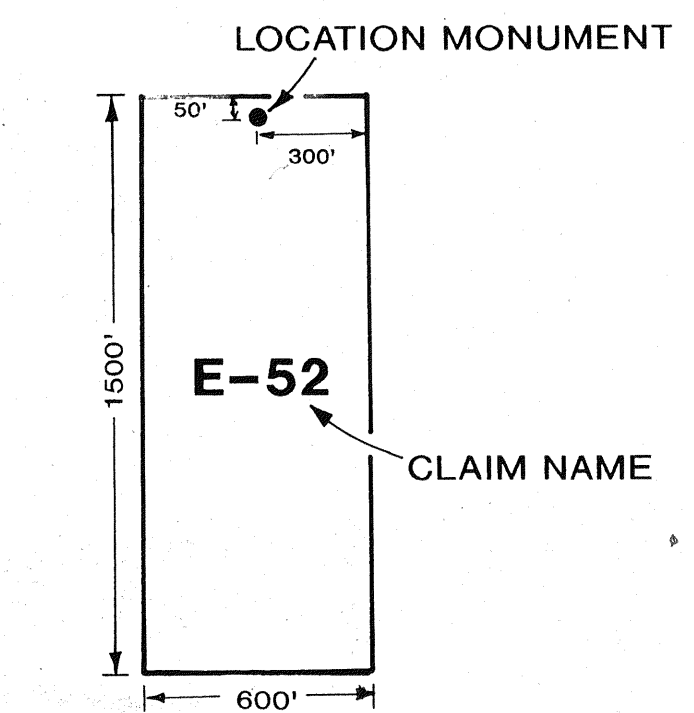
23

24

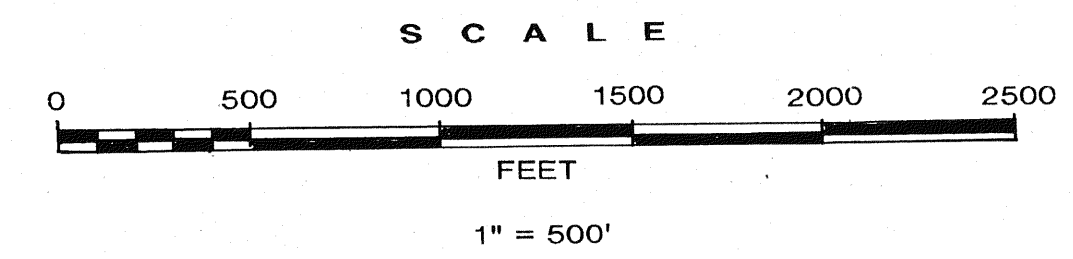
19



TYPICAL CLAIM

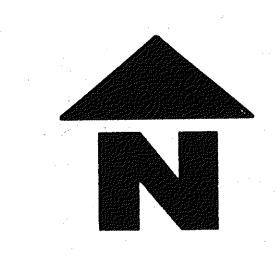


All claims are 600' x 1500'.
Discovery monuments for claims are 50' from claim end centers.

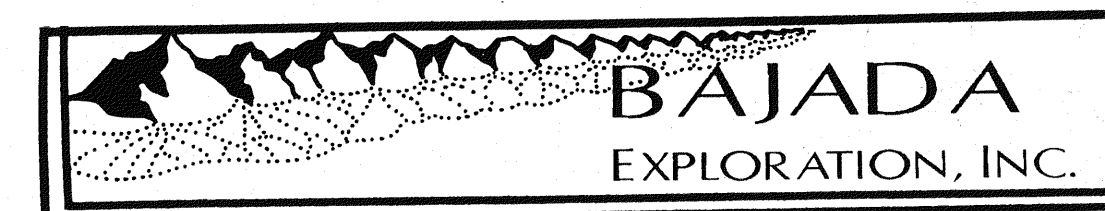


E-41 through E-56 claims were located on January 20, 1998.
E-73 through E-86 claims were located on February 12, 1998.

Claims staked by:
BAJADA EXPLORATION, INC.
310 RIVERBOAT ROAD
DAYTON, NEVADA 89403



DRAFTED BY: Peg O'Malley
BASE MAP: DEVON PEAK, NEVADA
7.5' QUADRANGLE
1986 PROVISIONAL EDITION



ME-53f CLAIM BLOCK

E CLAIMS 41-56 & 73-86

Sections 23, 24, 25, 26 & 36, T.20 N., R.52 E.;
Sections 19, 30 & 31, T.20 N., R.53 E. MDB&M

EUREKA COUNTY, NEVADA

MARCH 1998

FILED AT THE REQUEST OF *Bajada Exploration, Inc.*
on *Apr 7* 19 *98* at *11* mins, past *11 A.M.*
RECORDS & DEEDS COUNTY, NEVADA M. N. REBALZATI, Recorder
File No. **17000** Fee \$ **750.00**