

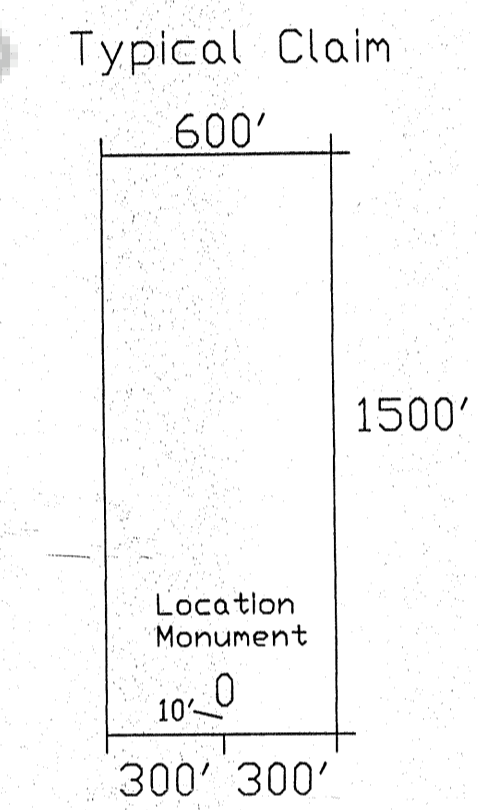
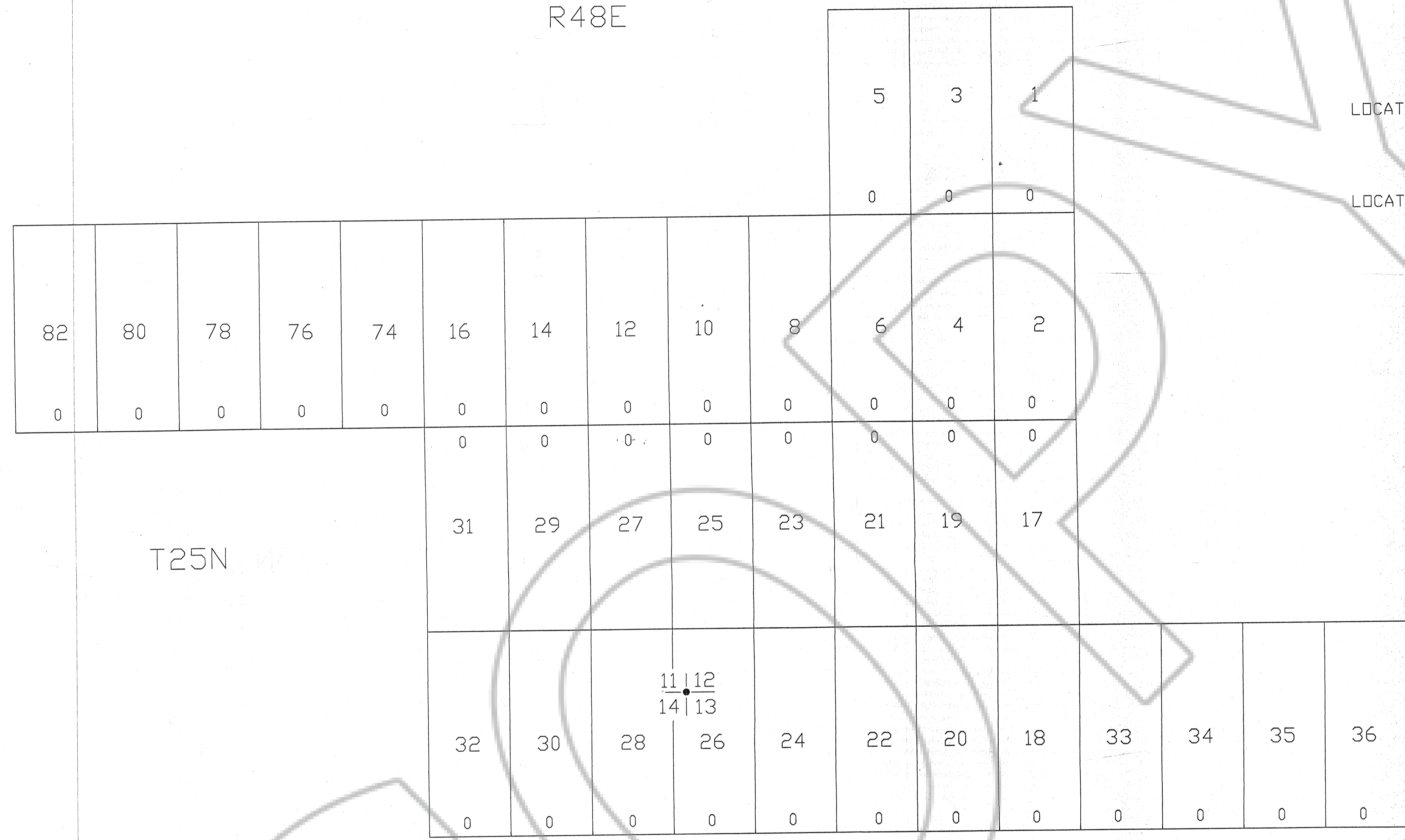
170105

R48E

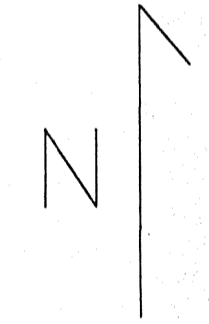
LOCATOR: RUBICON RESOURCES INC.
P.O. BOX 4940
SPARKS, NEVADA 89432

LOCATION: Section 11, 12, 13, 14, T25E R48E
Eureka County, Nevada

LOCATED: March 4, 16, 17, 1998



Scale 1" = 500'



TIE; The NW corner of GARDEN 26 is 100' west and 400' north of common corner of Sections 11, 12, 13 and 14, T25N R48E.

GARDEN LODE MINING CLAIMS
GARDEN 1-6, 8, 10, 12, 14, 16-36, 74, 76, 78, 80, 82

RUBICON RESOURCES INC.

DAVID R. SHADDRICK, AGENT May 12, 1998

FILED AT THE REQUEST OF *David R. Shadrack*
on *May 14* 19 *98*, at *2:30* mins, past *2:41* P.M.
RECORDS OF EUREKA COUNTY, NEVADA M. N. REBALEATI, Recorder
File No. **170105** Fee \$ *544.00*