

170128

COUNTY COMMISSIONERS APPROVAL

AT A REGULAR MEETING OF THE EUREKA COUNTY COMMISSIONERS HELD ON MAY 19, 1998, THIS MAP, CONSISTING OF ONE SHEET WAS PRESENTED AS A PROPOSED PARCEL MAP IN SECTION 14, T32N - R50E, M0B & M, AS EUREKA COUNTY HEREBY ACCEPTS THE OFFER OF DEDICATION FOR PUBLIC PURPOSES AND APPROVES THE DEDICATION OF THE PROPOSED PARCELS SHOWN ON THIS MAP. THE DEDICATION OF PUBLIC RIGHTS OF WAY SHOWN ON THIS MAP, STREETS AND ROAD RIGHTS OF WAY ARE NOT ACCEPTED BY THE COUNTY UNTIL THEY ARE IMPROVED TO COUNTY STANDARDS APPROVED BY THE COUNTY DEPARTMENT OF PUBLIC WORKS, AND EXPRESSLY ACCEPTED BY RESOLUTION OF THE BOARD OF EUREKA COUNTY COMMISSIONERS.

CHAIRMAN, EUREKA COUNTY COMMISSIONERS  
EUREKA COUNTY CLERK

ACCEPTANCE OF THIS PARCEL MAP BY EUREKA COUNTY DOES NOT CONSTITUTE A GUARANTEE THAT EACH OR ANY LOT SHOWN HEREON CONTAINS A LAWFUL BUILDING SITE.  
OWNER'S RESPONSIBILITY OF ANY PARCEL, CREATED BY THIS MAP MAY BE SUBJECT TO THE PROVISIONS OF NRS 278.482, PERMITTING IMPOSITION OF REASONABLE IMPROVEMENT STANDARDS, BUT NOT GREATER IMPROVEMENTS THAN REQUIRED FOR SUBDIVISIONS.  
ALL REQUIREMENTS OF GOVERNMENTAL AGENCIES WITH PERMIT AUTHORITY MUST BE MET.

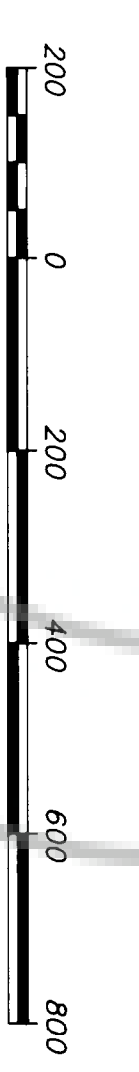
SURVEYOR'S CERTIFICATE

I, ROBERT E. WORLEY, A PROFESSIONAL LAND SURVEYOR LICENSED IN THE STATE OF NEVADA, CERTIFY THAT:  
1. THIS PLAT REPRESENTS THE RESULTS OF A SURVEY CONDUCTED UNDER MY DIRECT SUPERVISION AT THE INSTANCE OF JAMES M. AND HELEN M. KLINE, AND THE SURVEY WAS COMPLETED ON MARCH 18, 1997.  
2. THE LANDS SURVEYED LIE WITHIN SECTION 14, T32N - R50E, M0B & M, AND THE SURVEY WAS COMPLETED ON MARCH 18, 1997.  
3. THIS PLAT COMPLES WITH THE APPLICABLE STATE STATUTES AND ANY LOCAL ORDINANCES IN EFFECT ON THE DATE THAT THE GOVERNING BODY GAVE ITS FINAL APPROVAL.  
4. THE MONUMENTS DEPICTED ON THE PLAT ARE OF THE CHARACTER SHOWN, COPIED, OR POSITIONS INDICATED AND ARE OF SUFFICIENT NUMBER AND DURABILITY.

ROBERT E. WORLEY, P.L.S. 6203  
OWNERS CERTIFICATE  
BEING FIRST DULY SWORN, THE UNDERSIGNED, JAMES M. AND HELEN M. KLINE, AFFIRMS AND SAYS THAT THEY ARE THE SOLE OWNERS OF THE LAND TO BE DIVIDED BY THIS MAP, AND THEY CONSENT TO THIS LAND DIVISION.

JAMES M. KLINE  
HELEN M. KLINE  
DATE 5/13/98

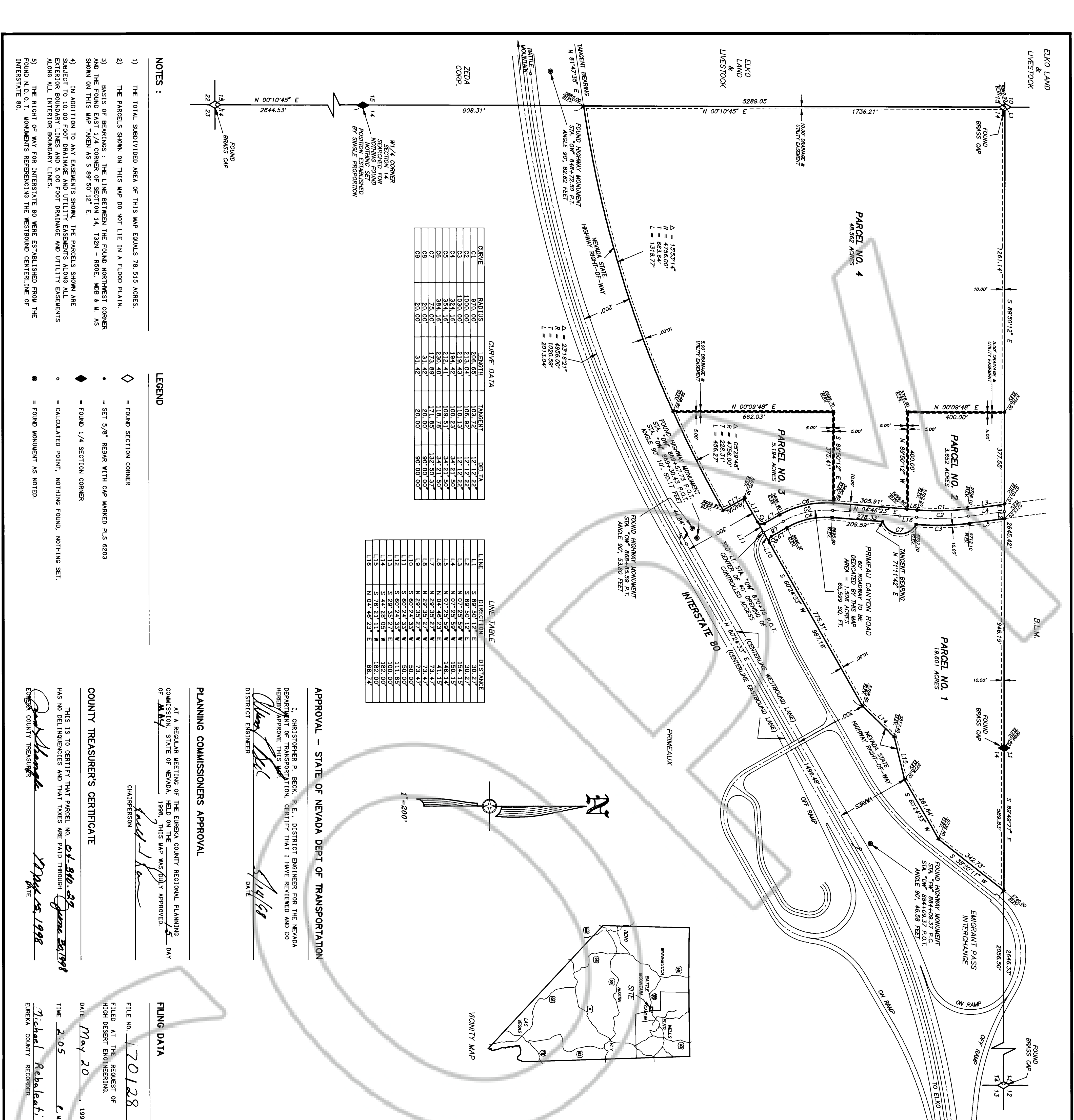
STATE OF NEVADA  
COUNTY OF ELKO  
THIS INSTRUMENT WAS ACKNOWLEDGED BEFORE ME ON THE 13th DAY OF MAY, 1998, BY JAMES M. AND HELEN M. KLINE.  
LINDAL PERKINS  
Notary Public  
Elko County, Nevada  
MY COMMISSION EXPIRES: MAY 5TH, 2001



PARCEL MAP

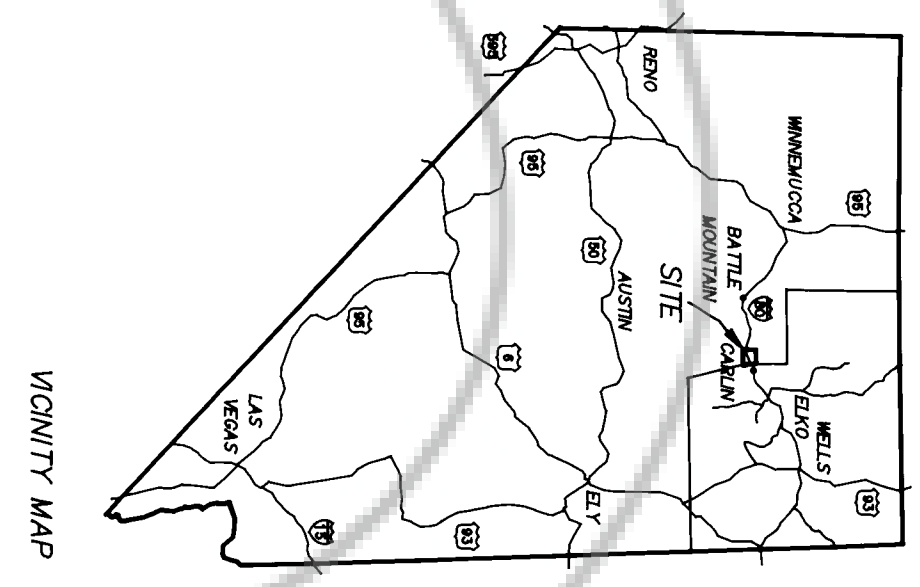
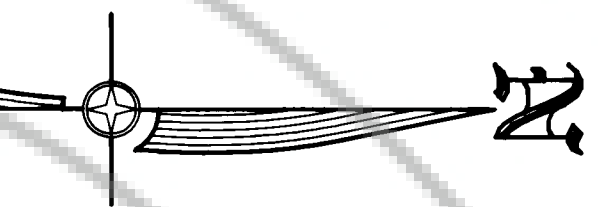
FOR  
JAMES M. & HELEN M. KLINE  
IN  
SECTION 14, T.32 N., R.50 E., M.D.B. & M.  
EUREKA COUNTY, NEVADA

HIGH DESERT ENGINEERING  
640 IDAHO STREET  
ELKO, NEVADA 89801  
(702) 738-4053  
97131



CURVE DATA table with columns: CURVE, RADIUS, LENGTH, TANGENT, DELTA.

LINE TABLE with columns: LINE, S. DIRECTION, E. DISTANCE.



- NOTES: 1) THE TOTAL SUBDIVIDED AREA OF THIS MAP EQUALS 78.515 ACRES...

- LEGEND: diamond symbol = FOUND SECTION CORNER...

PLANNING COMMISSIONERS APPROVAL  
AT A REGULAR MEETING OF THE EUREKA COUNTY REGIONAL PLANNING COMMISSION, STATE OF NEVADA, 1998, THIS MAP WAS DULY APPROVED.

FILE NO. 170128  
FILED AT THE REQUEST OF HIGH DESERT ENGINEERING.  
DATE May 20, 1998

COUNTY TREASURER'S CERTIFICATE  
THIS IS TO CERTIFY THAT PARCEL NO. 01-510-09...

Michael Raboleati  
EUREKA COUNTY TREASURER