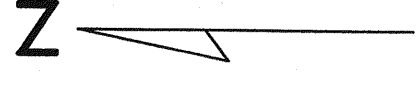
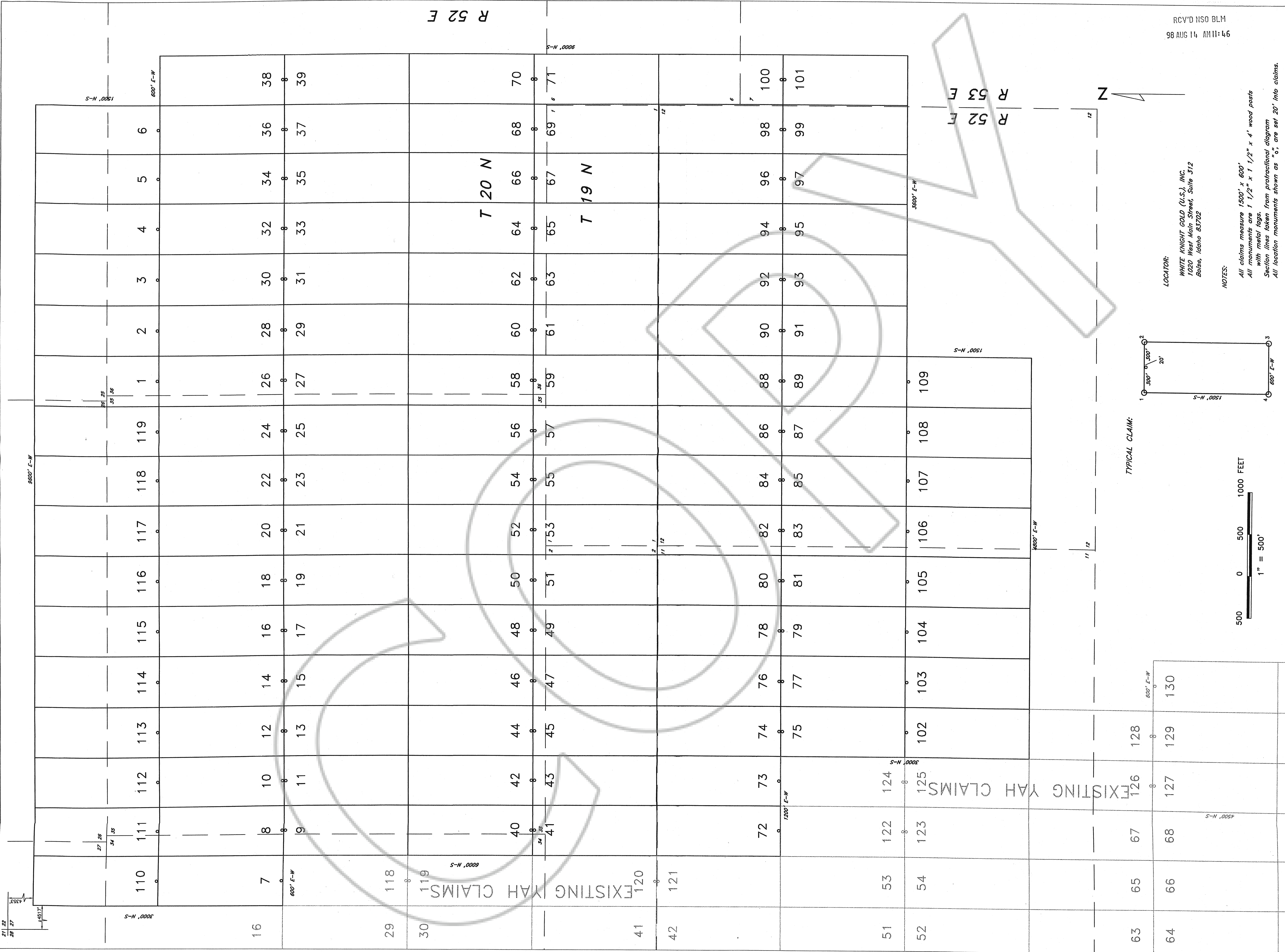


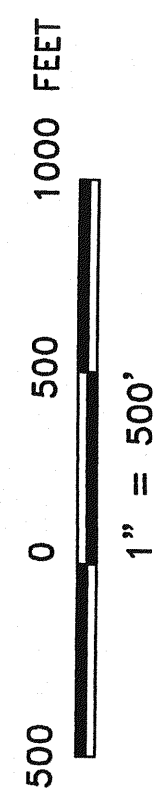
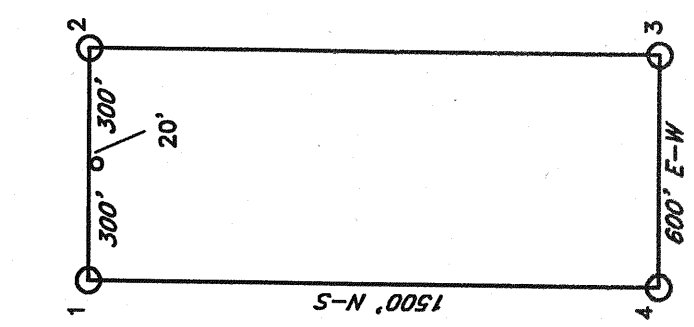
R 52 E

RCV'D NSO BLM
98 AUG 14 AM11:46



LOCATOR:
WHITE KNIGHT GOLD (U.S.), INC.
1020 West Main Street, Suite 312
Boise, Idaho 83702

NOTES:
All claims measure 1500' x 600'
All monuments are 1 1/2" x 1 1/2" x 4' wood posts
with metal tags.
Section lines taken from projection diagram
All location monuments shown as "o", are set 20' into claims.



YAE (1-119)
LODE MINING CLAIMS
UNSURVEYED SECTIONS 1-2, 11, 12 T19N R52E
UNSURVEYED SECTIONS 25-27, 34-36 T20N R52E
SECTIONS 6&7 T19N R53E
Eureka County, Nevada

FILED AT THE REQUEST OF
White Knight Gold (U.S.) Inc
Aug 20 1998
RECORDS SECTION, NEVADA DEPT. OF LANDS & MINES
FILE NO. 220-119-1

LOCATION DATES:
YAE 7-39 June 4th 1998
YAE 1-6 & 40-109 June 5th 1998
YAE 110-119 July 25th 1998