

LOCATION:
 WHITE KNIGHT GOLD (U.S.) INC.
 1020 West Main Street, Suite 312
 Boise, Idaho 83702

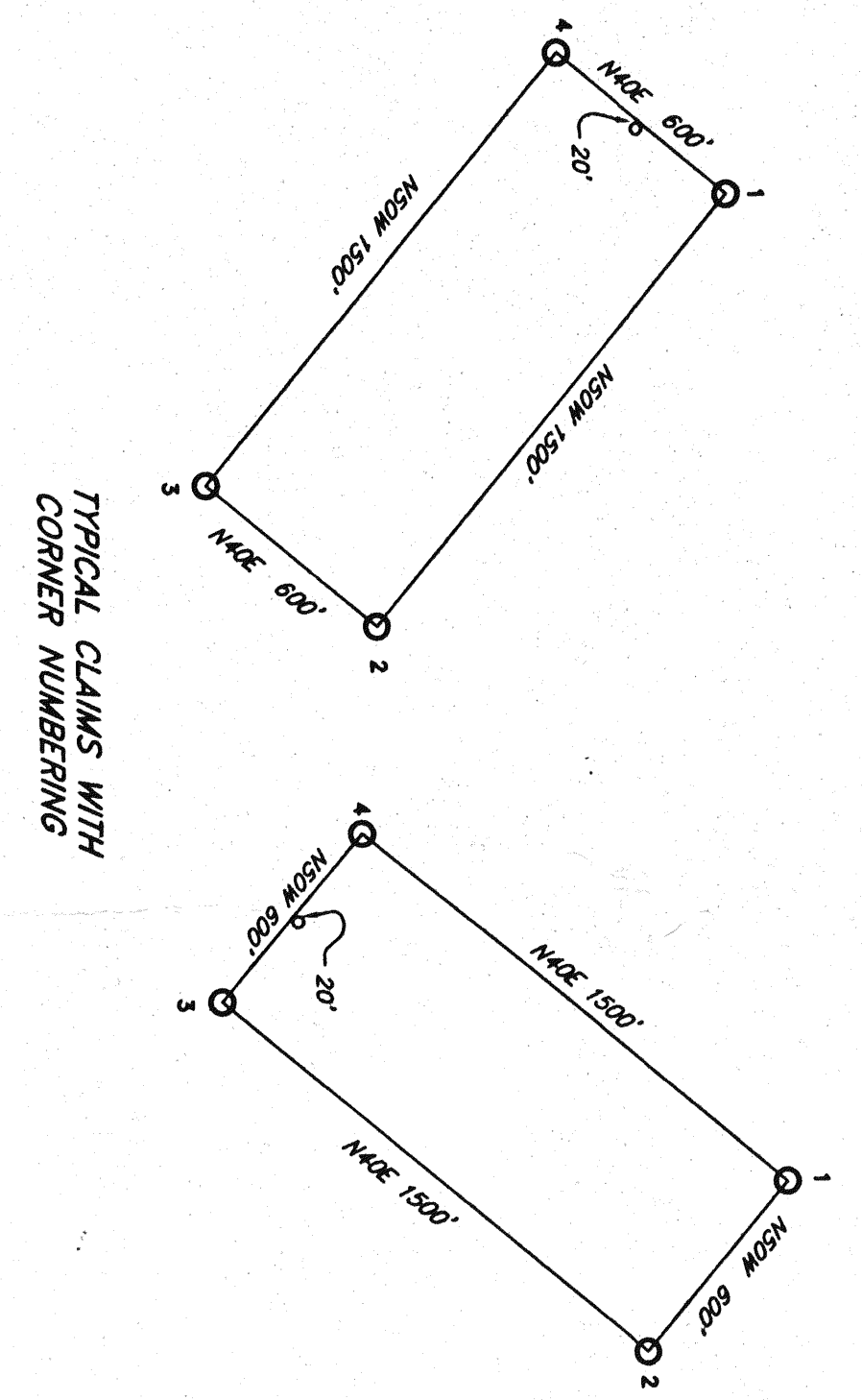
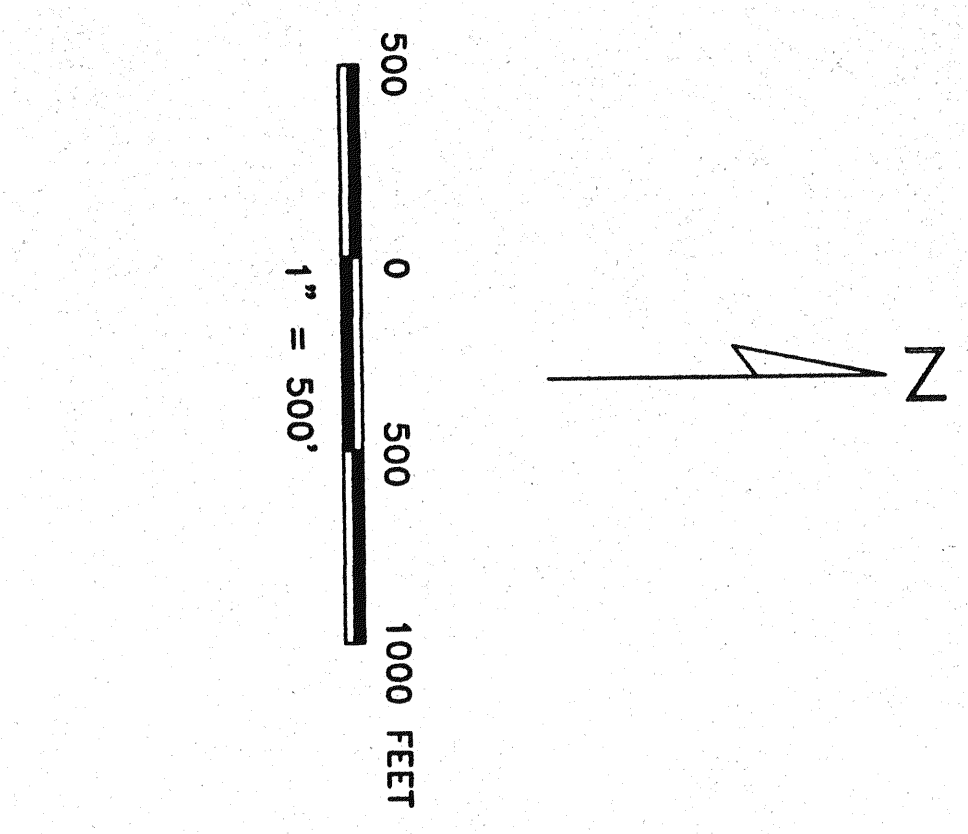
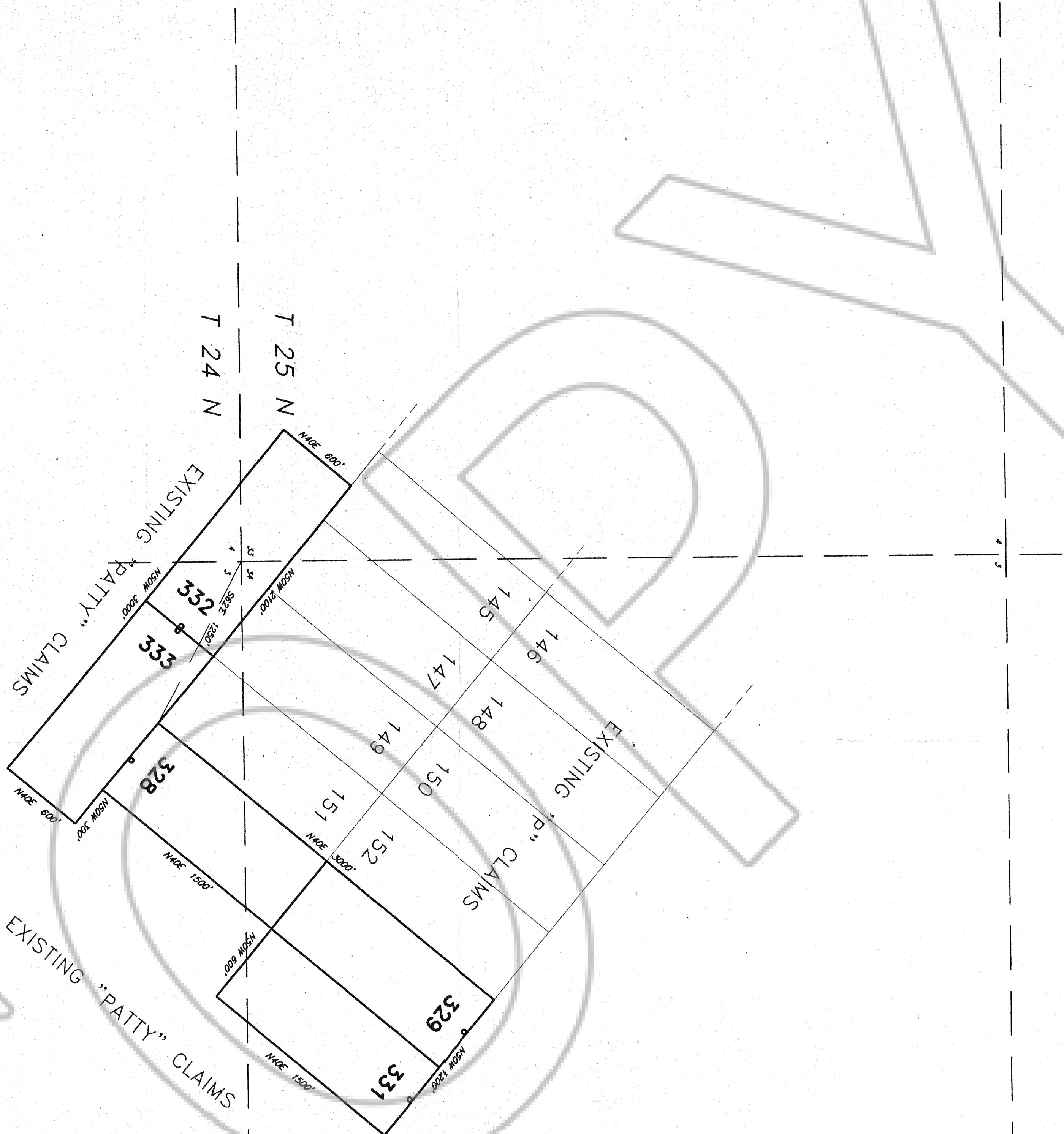
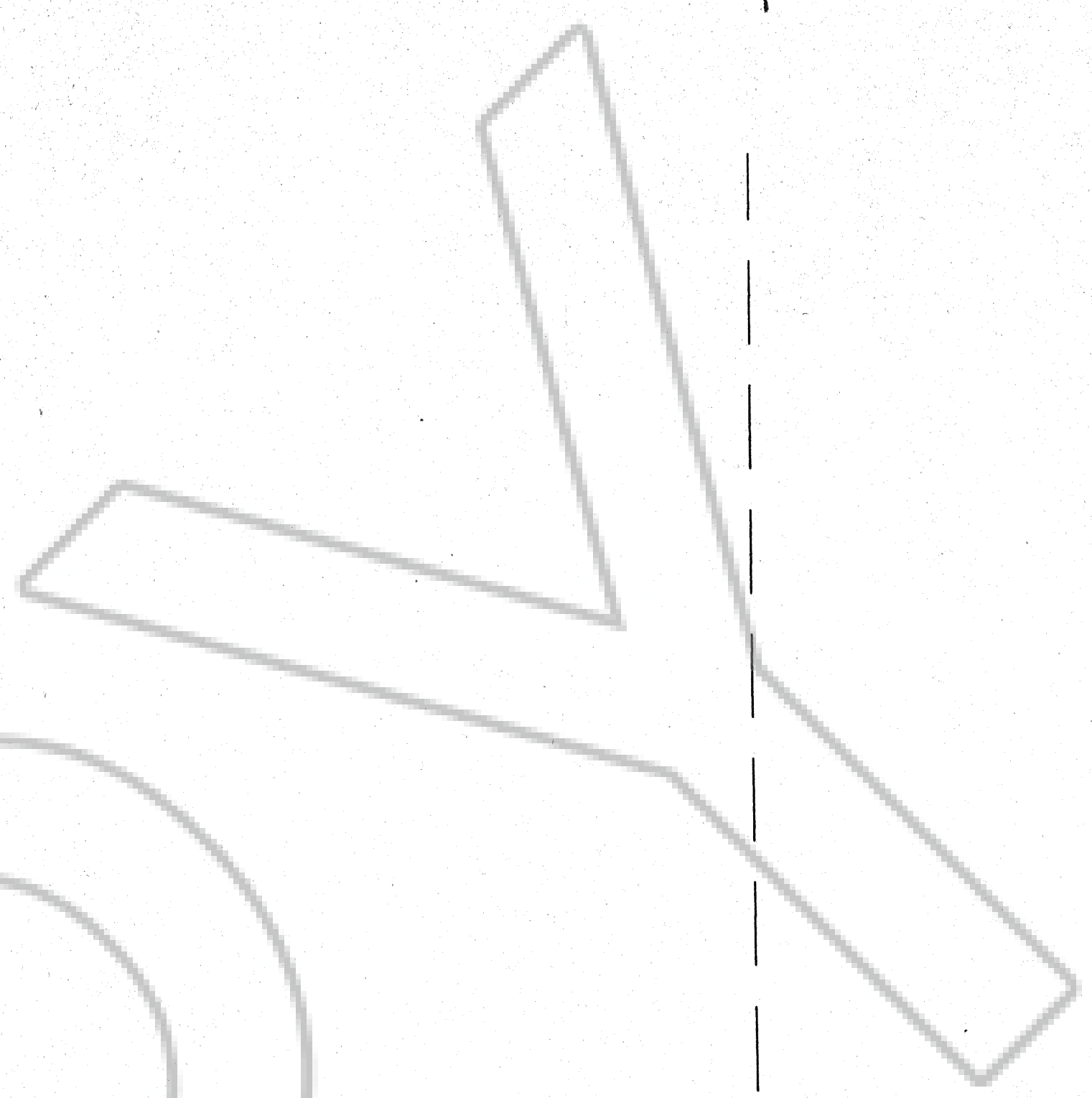
NOTES:
 All monuments are 1 1/2" x 1 1/2" x 4' wood posts
 with scribed metal tags.
 All location monuments shown as "0".

THE:
 The NW corner, Range S.33T.E. 4620' from the NW corner
 of Section 5, T24N, R49E

LOCATION DATE:
 JULY 28th, 1998

P 330
 LODGE MINING CLAIMS
 SECTIONS 3 T24N, R49E
 Eureka County, Nevada

FILED AT THE REQUEST OF *White Knight Gold (U.S.) Inc.*
 ON 01 23 98 at 10 19 mins, PM, 1998
 RECORDS OF EUREKA COUNTY, NEVADA IN N.E. 1/4, SECTION 3,
 T24N, R49E, FILE NO. 170916 Fee \$ 50.00



LOCATION:
 WHITE KNIGHT GOLD (U.S.) INC.
 1020 West Main Street, Suite 312
 Boise, Idaho 83702

NOTES:
 All claims measure 1500x600'
 All monuments are 1 1/2" x 1 1/2" x 4" wood posts
 with scribed metal tags.
 All location monuments shown as "o" are set 20' into claim.

TIE:
 The SW corner of P328 Bears S.62°E. 1250' from the NW corner
 of Section 3, 124N, R49E

LOCATION DATES:
 July 29th 1998

P (328,329,331-333)
 LODGE MINING CLAIMS
 SECTIONS 33,34 123N, R49E
 SECTIONS 3,4 124N, R49E
 Eureka County, Nevada

FILED AT THE REQUEST OF *White Knight Gold (US)*
 on 07 23 1998 at 19 minutes past 4 P. M.
 RECORDS OF EUREKA COUNTY, NEVADA, M. N. REESE, CLERK
 File No. 1790916 Fee \$ 90.00