

PDGV 1-255, 257-367 LODGE MINING CLAIMS		
Scale: 1" = 500'	Located: 9/15-20/98, 10/1/98	Drawn By: GH
October 22, 1998		Revised:
By:	NORTH AMERICAN EXPLORATION, INC.	
1315 Greg St., Suite 107, Sparks, Nevada 89431	Map 1 of 3	

LOCATOR:
PLACER DOME EXPLORATION, INC.
240 South Rock Blvd., Suite #117
Reno, NV 89502

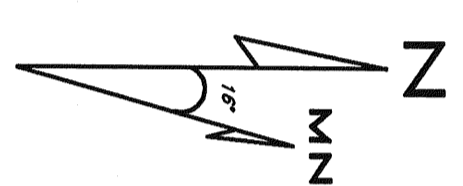
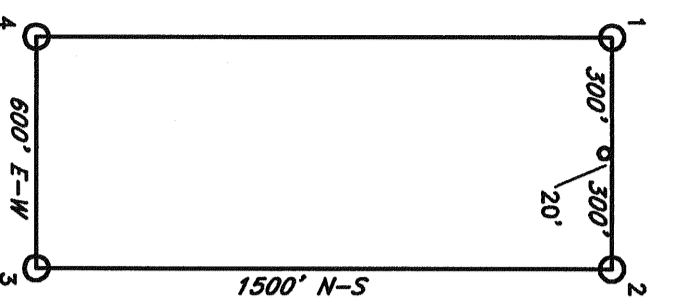
LOCATIONS:
Sections 11-14, 22-27, 35, 36, T26N, R47E MDBM,
Lander County, Nevada
Sections 7, 18-20, 28-33, T26N, R48E MDBM,
Lander & Esmeralda Counties, Nevada
Section 1, T26N, R47E MDBM, Lander County, Nevada
Sections 4-6, T25N, R48E MDBM,
Lander & Esmeralda Counties, Nevada

THE POINT:
The NE corner of PDGV 255 is located approximately
216' South and 202' East of the NW corner of
Section 7, T26N, R48E MDBM, Lander County, Nevada

LOCATION DATES:
09/15/98 PDGV 212-221
09/16/98 PDGV 202-211, 222-255
09/17/98 PDGV 173-201, 69-106
09/18/98 PDGV 1-38, 129-170
09/19/98 PDGV 39-68, 107-128
09/20/98 PDGV 255-364
10/01/98 PDGV 171, 172, 365-367

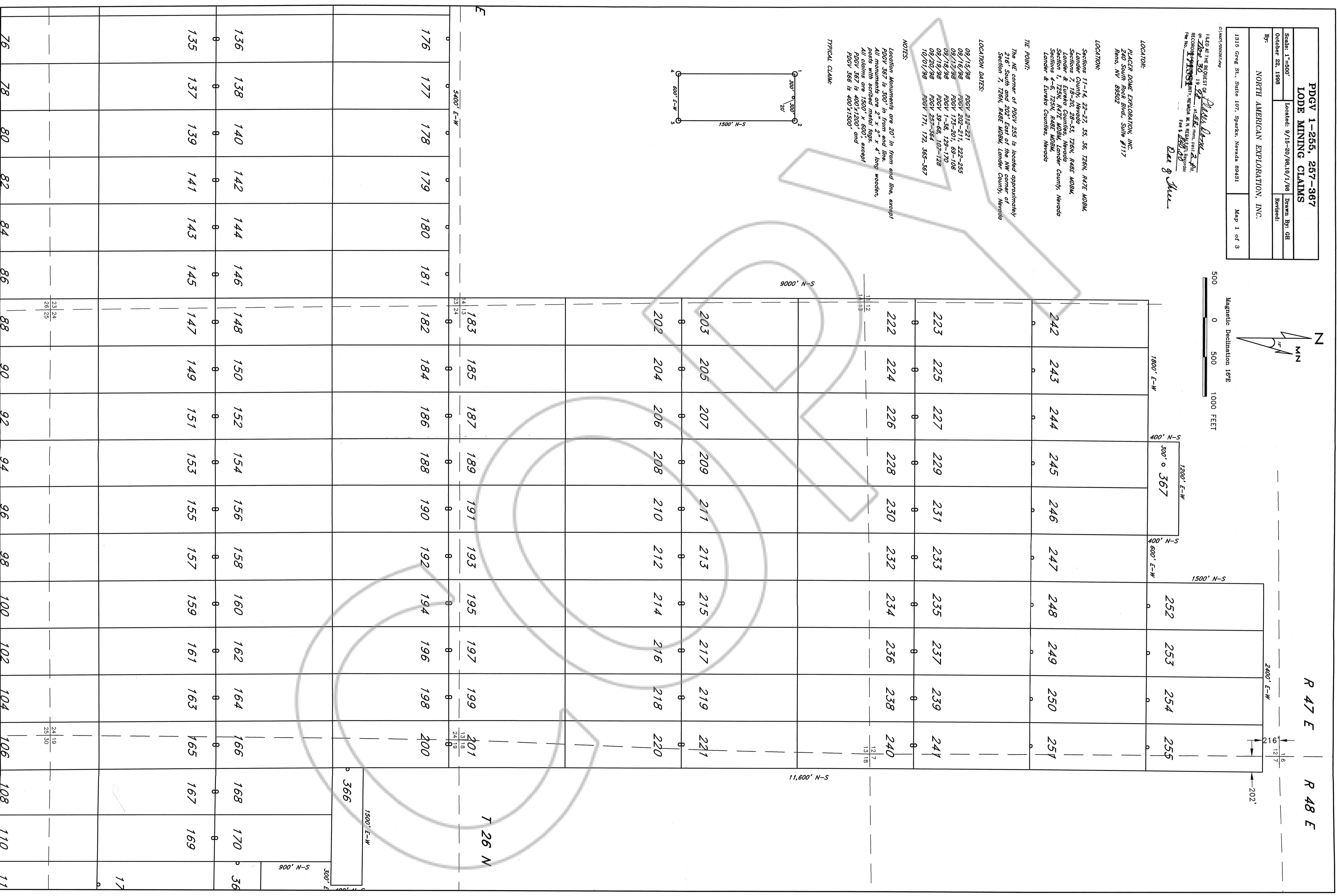
NOTES:
Location Monuments are 20' in from end line, except
PDGV 367 is 300' in from end line.
All monuments are 2" x 2" x 4' long wooden,
pois with scribed metal tags.
All claims are 1500' x 600', except
PDGV 367 is 400'x1200' and
PDGV 366 is 400'x1500'

TYPICAL CLAIM:



Magnetic Declination 16°E

Scale: 500 0 500 1000 FEET



R 47 E

R 48 E

T 26 N

366

1500' E-W

300' E-W

900' N-S

17

36

