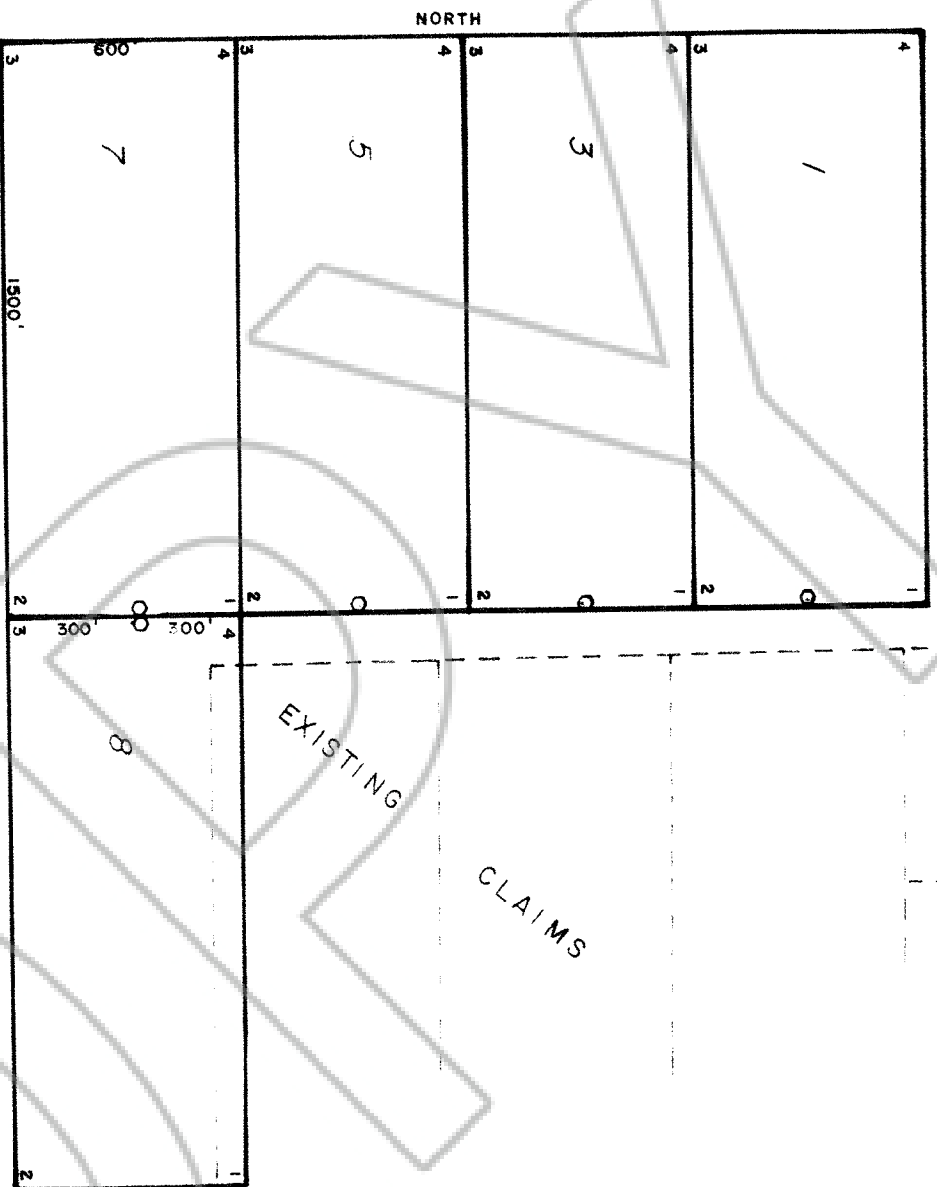


15 | 14
22 | 23

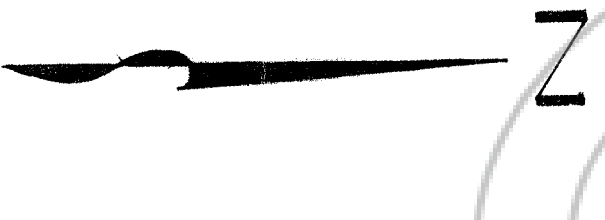


- Location Monument Set 5 ft. From End Line
- Corner Number
- All Location Monuments & Corners Are 2" x 2" x 4' Wood Posts With Permanent Ink Markings or Scribed Metal Tags.

NKP LODE CLAIMS
 Located Dec 1, 1998
 E1/2, E1/2 W1/2 Sec 22
 T 24N, R48E, MDBM
 Eureka County, Nevada

Claimant: PLATORO WEST, LLC
 PO BOX 12650

FILED AT THE REQUEST OF PRESCOTT, AZ86304 LLC
 on Jan 11 19 99, at 1 mins, post 1 P.M.
 RECORDS OF EUREKA COUNTY, NEVADA M. N. REBALEATI, Recorder
 File No. 2508 Fee \$ 25.00



TIE: 8.50' E
 3890'
 TO S1/4 COR.
 SEC. 25 T24N
 R48E