

**DEVIL'S GATE
GENERAL IMPROVEMENT DISTRICT**
THE DISTRICT BOUNDARY SHOWN ON THIS MAP HAS BEEN REVIEWED
AND IS HEREBY ACCEPTED.

HALE BAILEY
HALE BAILEY, MANAGER

DATE _____

SURVEYOR'S CERTIFICATE
I, DOUGLAS A. POTTS, DO HEREBY CERTIFY THAT THIS MAP WAS COMPILED
FROM AN INTERPRETATION OF RECORDED INFORMATION AND THAT IT
REPRESENTS THE BOUNDARY OF THE DEVIL'S GATE GENERAL IMPROVEMENT
DISTRICT EXISTING THIS DATE.

Douglas A. Potts
DOUGLAS A. POTTS, P.L.S. 5716

1-15-99

**BOUNDARY MAP
FOR THE
DEVIL'S GATE
GENERAL IMPROVEMENT DISTRICT**
LOCATED IN THE E 1/2 OF SECTION 17, AND
THE S 1/2 OF THE SE 1/4 OF SECTION 29
T 20 N., R 53 E., M 10 W.
NEVADA
EUREKA COUNTY,

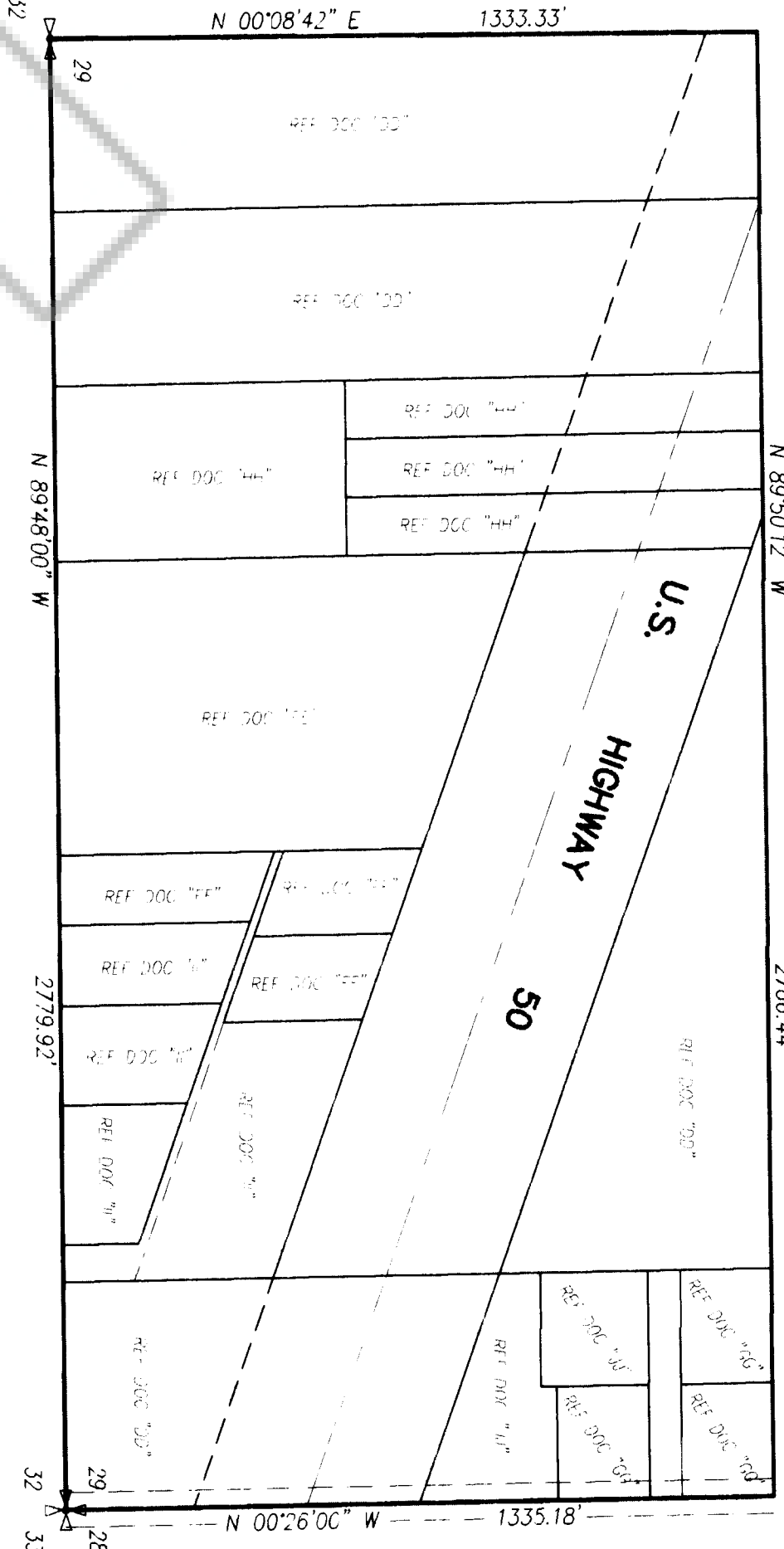
LUNDS AND ASSOCIATES
SURVEYORS
17001 860-7077
CARMEN CITY, NEVADA

DATE: January 12, 1999
JOB NO.: 3494.005
SHEET 1 OF 1

RECORDER'S CERTIFICATE
FILED AT THE REQUEST OF
Douglas A. Potts
ON THE *21st* DAY OF *January*, 1999
AT *3* MIN. PAST *11* AM. IN THE
OFFICIAL RECORDS OF EUREKA COUNTY,
NEVADA
FILE NUMBER: *171766*
FEE: *1 No fee*

REFERENCE DOCUMENTS

- A) LARGE DIVISION MAP FILE NO. 81925, OFFICIAL RECORDS OF EUREKA COUNTY.
- B) PARCEL MAP FILE NO. 82265, OFFICIAL RECORDS OF EUREKA COUNTY.
- C) PARCEL MAP FILE NO. 82266, OFFICIAL RECORDS OF EUREKA COUNTY.
- D) PARCEL MAP FILE NO. 82267, OFFICIAL RECORDS OF EUREKA COUNTY.
- E) PARCEL MAP FILE NO. 82268, OFFICIAL RECORDS OF EUREKA COUNTY.
- F) PARCEL MAP FILE NO. 82269, OFFICIAL RECORDS OF EUREKA COUNTY.
- G) PARCEL MAP FILE NO. 82270, OFFICIAL RECORDS OF EUREKA COUNTY.
- H) PARCEL MAP FILE NO. 84388, OFFICIAL RECORDS OF EUREKA COUNTY.
- I) PARCEL MAP FILE NO. 80926, OFFICIAL RECORDS OF EUREKA COUNTY.
- J) PARCEL MAP FILE NO. 80923, OFFICIAL RECORDS OF EUREKA COUNTY.
- K) PARCEL MAP FILE NO. 104804, OFFICIAL RECORDS OF EUREKA COUNTY.
- L) PARCEL MAP FILE NO. 104805, OFFICIAL RECORDS OF EUREKA COUNTY.
- M) PARCEL MAP FILE NO. 114556, OFFICIAL RECORDS OF EUREKA COUNTY.
- N) PARCEL MAP FILE NO. 114559, OFFICIAL RECORDS OF EUREKA COUNTY.
- O) PARCEL MAP FILE NO. 115499, OFFICIAL RECORDS OF EUREKA COUNTY.
- P) PARCEL MAP FILE NO. 115500, OFFICIAL RECORDS OF EUREKA COUNTY.
- Q) PARCEL MAP FILE NO. 117612, OFFICIAL RECORDS OF EUREKA COUNTY.
- R) PARCEL MAP FILE NO. 117990, OFFICIAL RECORDS OF EUREKA COUNTY.
- S) PARCEL MAP FILE NO. 118566, OFFICIAL RECORDS OF EUREKA COUNTY.
- T) PARCEL MAP FILE NO. 118810, OFFICIAL RECORDS OF EUREKA COUNTY.
- U) AMENDED PARCEL MAP FILE NO. 118810, OFFICIAL RECORDS OF EUREKA COUNTY.
- V) PARCEL MAP FILE NO. 120751, OFFICIAL RECORDS OF EUREKA COUNTY.
- W) PARCEL MAP FILE NO. 120753, OFFICIAL RECORDS OF EUREKA COUNTY.
- X) PARCEL MAP FILE NO. 126161, OFFICIAL RECORDS OF EUREKA COUNTY.
- Y) PARCEL MAP FILE NO. 126194, OFFICIAL RECORDS OF EUREKA COUNTY.
- Z) PARCEL MAP FILE NO. 127230, OFFICIAL RECORDS OF EUREKA COUNTY.
- AA) PARCEL MAP FILE NO. 126446, OFFICIAL RECORDS OF EUREKA COUNTY.
- BB) PARCEL MAP FILE NO. 126447, OFFICIAL RECORDS OF EUREKA COUNTY.
- CC) PARCEL MAP FILE NO. 127230, OFFICIAL RECORDS OF EUREKA COUNTY.
- DD) RECORD OF SURVEY, FILE NO. 85923, OFFICIAL RECORDS OF EUREKA COUNTY.
- EE) PARCEL MAP FILE NO. 89171, OFFICIAL RECORDS OF EUREKA COUNTY.
- FF) PARCEL MAP FILE NO. 96027, OFFICIAL RECORDS OF EUREKA COUNTY.
- GG) PARCEL MAP FILE NO. 96028, OFFICIAL RECORDS OF EUREKA COUNTY.
- HH) PARCEL MAP FILE NO. 96029, OFFICIAL RECORDS OF EUREKA COUNTY.
- II) PARCEL MAP FILE NO. 118062, OFFICIAL RECORDS OF EUREKA COUNTY.
- JJ) PARCEL MAP FILE NO. 118063, OFFICIAL RECORDS OF EUREKA COUNTY.
- KK) RECORD OF SURVEY, FILE NO. 169772, OFFICIAL RECORDS OF EUREKA COUNTY.
- LL) PARCEL MAP FILE NO. 169773, OFFICIAL RECORDS OF EUREKA COUNTY.
- MM) PARCEL MAP FILE NO. 169773, OFFICIAL RECORDS OF EUREKA COUNTY.
- NN) PARCEL MAP FILE NO. 124583, OFFICIAL RECORDS OF EUREKA COUNTY.
- OO) PARCEL MAP FILE NO. 130646, OFFICIAL RECORDS OF EUREKA COUNTY.



VICINITY MAP
N.T.S.