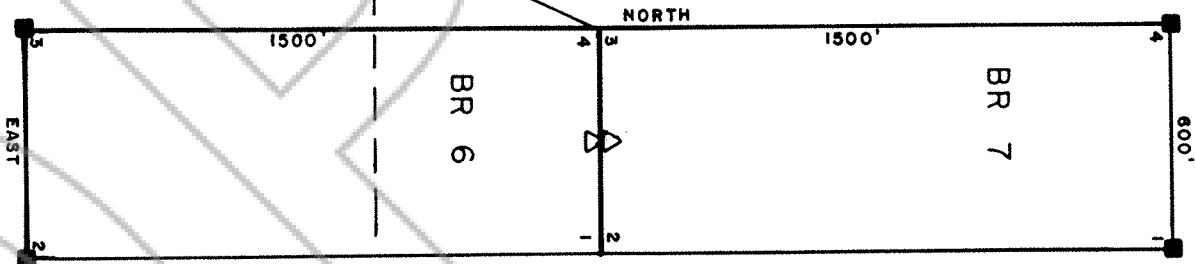


Tie: S25°W, 640'
 To SW Cor. Sec.
 13, T27N, R52E



- △ Location Monument Set 15 'From End Line
- ┆ Corner Number
- 3' Pile of Rocks

All Location Monuments & Corners Are 2"x2"x4'
 Wood Post, Unless Otherwise Noted, With
 Permanent Ink Markings or Scribed
 Metal Tags.

BR LODGE CLAIMS
 Located Dec. 1, 1998
 SW 1/4 Sec. 13 & NW 1/4
 Sec. 24, T27N, R52E
 Eureka County, Nevada

Claimant: Platona West, LLC
 PO Box 12650
 Prescott, Az. 86304



0 500'
 SCALE: 1"=500'

FILED AT THE REQUEST OF Platona West LLC
 ON March 22 19 99 at 3 mins, past 1 P.M.
 RECORDS OF EUREKA COUNTY, NEVADA M. N. REBALEATI, Recorder
 File No. 191857 Fee \$ 30.00