

36

6

NOTES

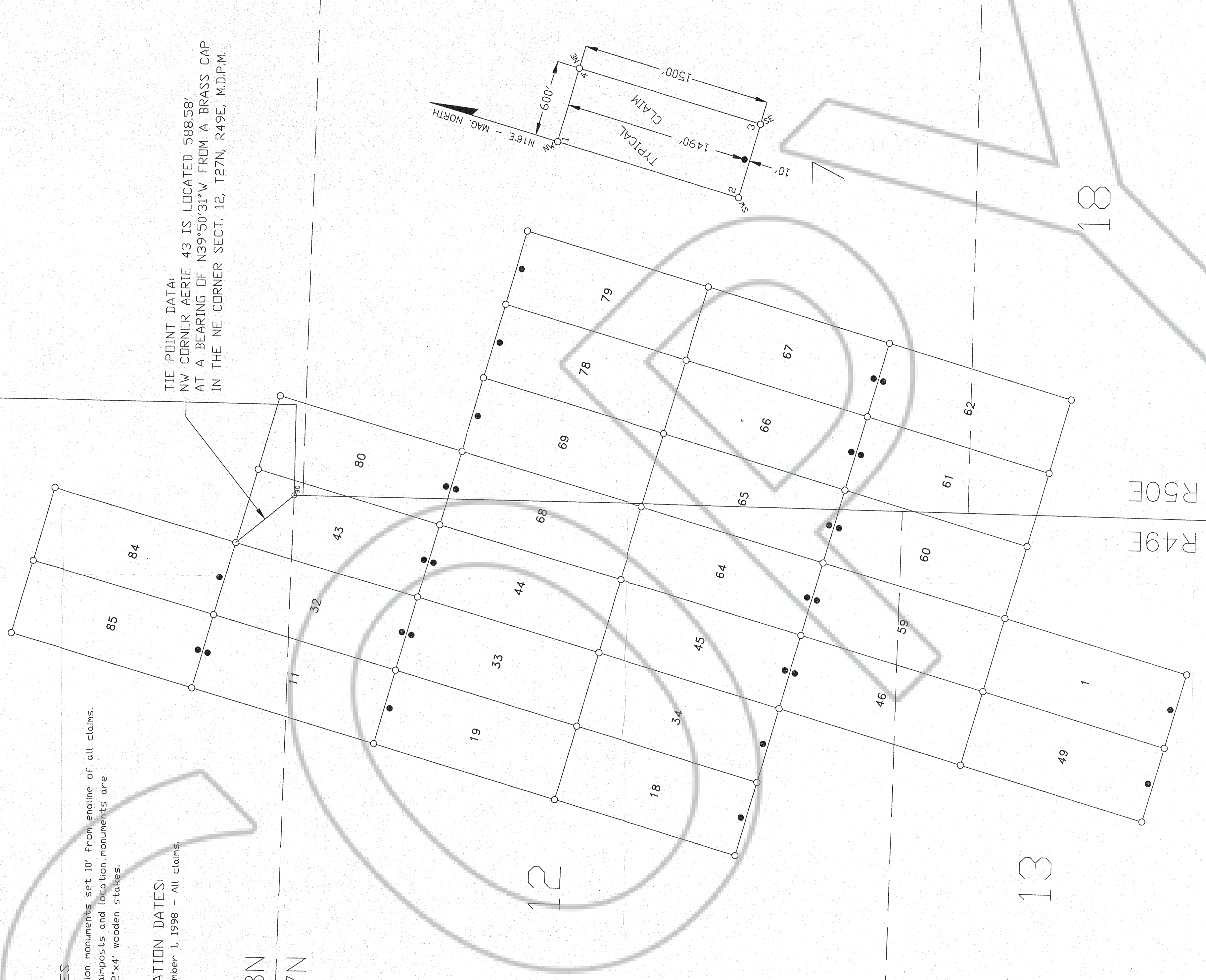
Location monuments set 10' from endline of all claims.  
All claimposts and location monuments are  
2"x2"x4' wooden stakes.

LOCATION DATES:

September 1, 1998 - All claims.

TIE POINT DATA:  
NW CORNER AERIE 43 IS LOCATED 588.58'  
AT A BEARING OF N39°50'31"W FROM A BRASS CAP  
IN THE NE CORNER SECT. 12, T27N, R49E, M.D.P.M.

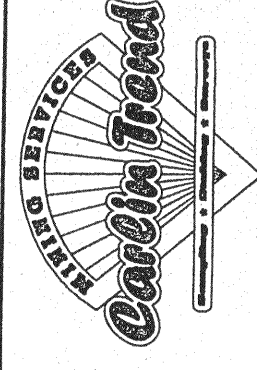
T28N  
T27N



AMENDED CLAIM MAP

Supersedes and corrects Eureka  
County Recorder file #170757  
by modifying the tie point data  
per Chilton Engineering.

FILED BY REQUEST OF *Jerry D. Oak*  
ON *SEP 5* 1998  
RECORDS OF EUREKA COUNTY, NEMADA  
FILE NO. **171862**



Jerry D. Oak  
P.O. Box 606  
Elko, Nevada 89803  
Aerie Claim Group

FILE NO.	171862
DATE	10/01/98
BY	JERRY D. OAK
CHECKED BY	JERRY D. OAK