

35

36

6

NOTES

Location monuments set 10' from endline of all claims.  
All claimposts and location monuments are 2"x2"x4' wooden stakes.

LOCATION DATES:

October 1, 1998 - AR 10, 17, 20, 35-36 & 89  
October 15, 1998 - AR 500 - 512

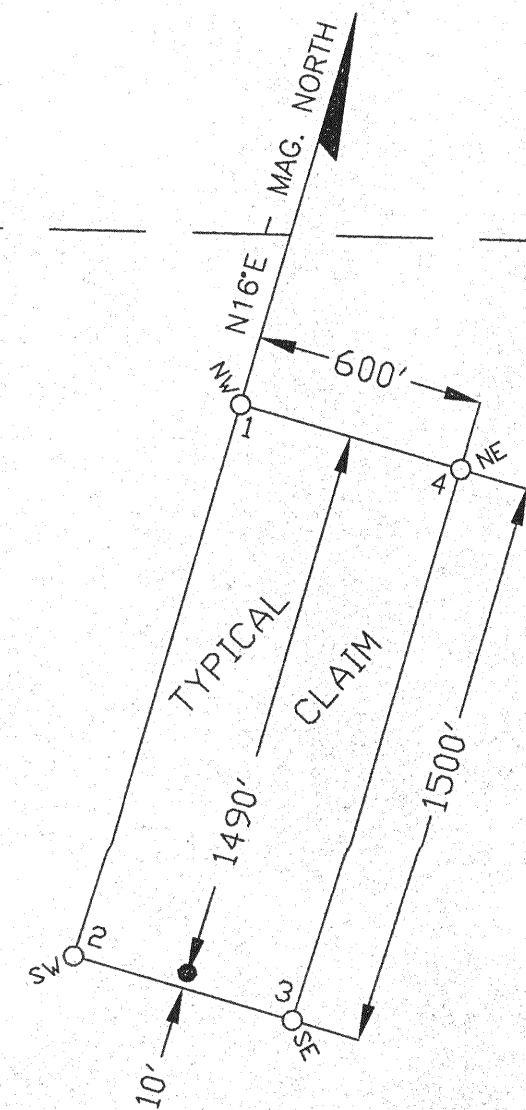
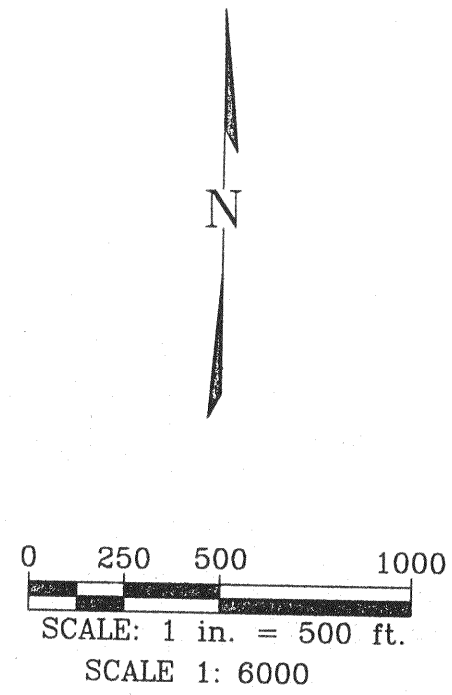
TIE POINT DATA:  
NW CORNER AERIE 43 IS LOCATED 588.58'  
AT A BEARING OF N39°50'31"W FROM A BRASS CAP  
IN THE NE CORNER SECT. 12, T27N, R49E, M.D.P.M.

T28N  
T27N

12

7

EXISTING CLAIMS



13

R49E

R50E

18



Jerry D. Oak  
P.O. Box 606  
Elko, Nevada 89803  
Aerie Claim Group

FILED AT THE REQUEST OF *Jerry Oak*  
on *Sub 5* 19 *99*, at *402* mins, dist *8A* M.  
RECORDS OF EUREKA COUNTY, NEVADA M. N. REDALE ATL Recorder  
File No. **171883** Fee \$ *7.00*

310 SILVER STREET ELKO, NV 89801 PH: (702) 778-0688	DATE: 01/13/99	ACAD FILE NAME: CLIENTS\NET\VAR1103	DRAWN BY: rgt
Sec. 36, T28N R49E; Sec. 6, T28N R50E; Eureka County, Nevada		FILE SCALE: 1" = 500'	CHECKED BY:

AMENDED CLAIM MAP  
Supersedes and corrects Eureka  
County Recorder file #171543  
by modifying the tie point data  
per Chilton Engineering.