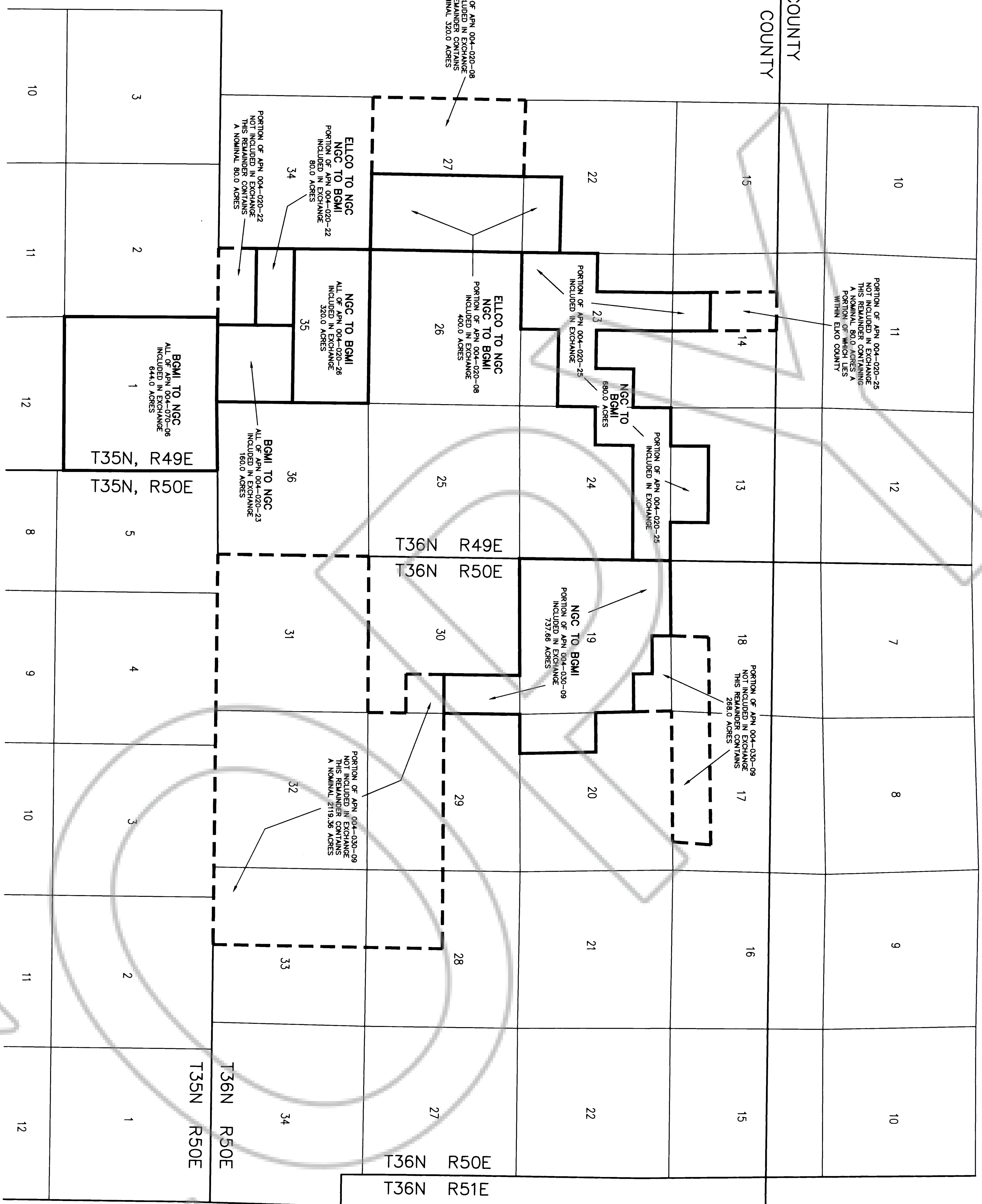


ELKO COUNTY
EUREKA COUNTY



BARRICK GOLDSTRIKE MINES INC. TO NEWMONT GOLD COMPANY
 TOWNSHIP 35 NORTH, RANGE 49 EAST, M.D.B. & M., EUREKA COUNTY, NEVADA
 SECTION 1: LOT 1 (40.97), LOT 2 (40.99), LOT 3 (41.01), LOT 4 (41.03), S1/2SE1/4, S1/2NW1/4, S1/2E, BEING ALL AND CONTAINING A NOMINAL 644.0 ACRES
 THE ABOVE BEING ALL OF APN 004-020-08.

TOWNSHIP 36 NORTH, RANGE 49 EAST, M.D.B. & M., EUREKA COUNTY, NEVADA
 SECTION 35: S1/4, CONTAINING A NOMINAL 180.0 ACRES
 THE ABOVE BEING ALL OF APN 004-020-23.

ELKO LAND AND LIVESTOCK COMPANY TO NEWMONT GOLD COMPANY
 TOWNSHIP 36 NORTH, RANGE 49 EAST, M.D.B. & M., EUREKA COUNTY, NEVADA
 SECTION 22: S1/2SE1/4, CONTAINING A NOMINAL 80.0 ACRES
 SECTION 27: E1/2, CONTAINING A NOMINAL 320.0 ACRES
 THE ABOVE BEING PART OF APN 004-020-08.

TOWNSHIP 36 NORTH, RANGE 49 EAST, M.D.B. & M., EUREKA COUNTY, NEVADA
 SECTION 35: N1/2SW1/4, CONTAINING A NOMINAL 80.0 ACRES
 THE ABOVE BEING PART OF APN 004-020-22.

NEWMONT GOLD COMPANY TO BARRICK GOLDSTRIKE MINES INC.
 TOWNSHIP 36 NORTH, RANGE 49 EAST, M.D.B. & M., EUREKA COUNTY, NEVADA
 SECTION 13: SE1/4SW1/4, SW1/4SE1/4, CONTAINING A NOMINAL 80.0 ACRES
 SECTION 14: SE1/4SW1/4, CONTAINING A NOMINAL 40.0 ACRES
 SECTION 23: SE1/4NE1/4, E1/2NW1/4, SW1/4, N1/2SE1/4, CONTAINING A NOMINAL 280.0 ACRES
 SECTION 24: 200.0 ACRES N1/2SW1/4, SW1/4NW1/4, CONTAINING A NOMINAL 200.0 ACRES
 THE ABOVE BEING PART OF APN 004-020-25.

TOWNSHIP 36 NORTH, RANGE 49 EAST, M.D.B. & M., EUREKA COUNTY, NEVADA
 SECTION 22: S1/2SE1/4, CONTAINING A NOMINAL 80.0 ACRES
 SECTION 27: E1/2, CONTAINING A NOMINAL 320.0 ACRES
 THE ABOVE BEING PART OF APN 004-020-08.

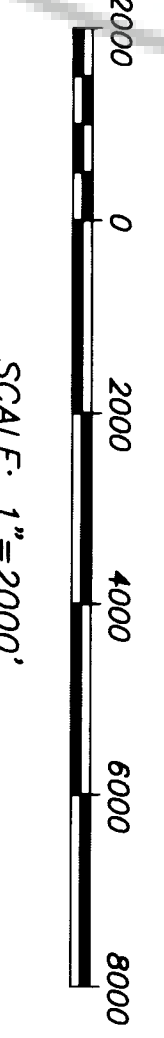
TOWNSHIP 36 NORTH, RANGE 49 EAST, M.D.B. & M., EUREKA COUNTY, NEVADA
 SECTION 35: N1/2SW1/4, CONTAINING A NOMINAL 80.0 ACRES
 THE ABOVE BEING PART OF APN 004-020-22.

TOWNSHIP 36 NORTH, RANGE 50 EAST, M.D.B. & M., EUREKA COUNTY, NEVADA
 SECTION 19: LOT 1 (39.40), LOT 2 (39.41), LOT 3 (39.42), LOT 4 (39.43), S1/2NW1/4NE1/4, S1/2NE1/4, E1/2NW1/4, E1/2SW1/4, SE1/4, CONTAINING A NOMINAL 577.66 ACRES
 SECTION 20: N1/2SW1/4, CONTAINING A NOMINAL 80.0 ACRES
 SECTION 30: N1/2SW1/4, CONTAINING A NOMINAL 80.0 ACRES
 SECTION 31: THE ABOVE BEING PART OF APN 004-030-09

COUNTY COMMISSIONERS' APPROVAL

A PUBLIC MEETING OF THE EUREKA COUNTY COMMISSIONERS HELD ON APRIL 18, 1999, THIS MAP CONSISTING OF ONE SHEET WAS PRESENTED AS THE DOCUMENT 9999 PERTAINING TO THE WAIVER OF THE REQUIREMENT FOR A PARCEL MAP PRESENTING TO THE WAIVER OF THE REQUIREMENT FOR A PARCEL MAP PRESENTING TO N.R.S. 278.497, FOR THE PARCELS DESCRIBED AND SHOWN HEREON.

CHAIRMAN, EUREKA COUNTY COMMISSIONERS
 EUREKA COUNTY CLERK



MAP

TO
 SERVE AS THE DOCUMENT REFERENCED UNDER
 N.R.S. 278.497 PERTAINING TO THE WAIVER
 OF SURVEY AND PARCEL MAP REQUIREMENTS
 FOR
 ELKO LAND AND LIVESTOCK COMPANY,
 NEWMONT GOLD COMPANY & BARRICK GOLDSTRIKE MINES INC.
 IN
 EUREKA COUNTY, NEVADA

99023

LEGEND

BQMI = BARRICK GOLDSTRIKE MINES INC.
 NGC = NEWMONT GOLD COMPANY
 ELKO = ELKO LAND AND LIVESTOCK COMPANY

FILE NO. 171974
 FILED AT THE REQUEST OF:
 NEWMONT GOLD COMPANY,
 ELKO LAND AND LIVESTOCK COMPANY,
 AND BARRICK GOLDSTRIKE MINES INC.

DATE: March 5, 1999
 TIME: 2:18 P.M.
 W.N. Rabeleah, by Shannon D. Kelly
 EUREKA COUNTY REGISTERED CLERK

COUNTY TREASURER'S CERTIFICATE

THIS IS TO CERTIFY THAT ALL PROPERTY TAXES ON PARCEL NO. 1'S 004-020-08, 004-020-25, 004-020-28, 004-030-08, & 004-070-08 HAVE BEEN PAID FOR THIS FISCAL YEAR.
 COUNTY TREASURER
 DATE: 7/20/02 5/19/99

COUNTY SURVEYOR'S CERTIFICATE

1. Barry Fitzpatrick, COUNTY SURVEYOR FOR EUREKA COUNTY, NEVADA, DO HEREBY WAIVE THE REQUIREMENT FOR THE SURVEY OF THE PARCELS DESCRIBED AND SHOWN HEREON PURSUANT TO N.R.S. 278.483.
 COUNTY SURVEYOR
 DATE: 3/5/99