

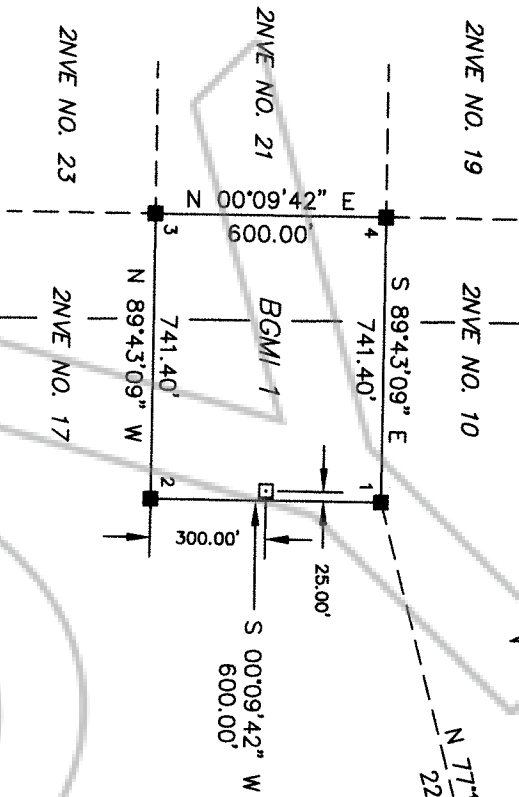
172161

BASIS OF BEARING
N 89°30'10" E
2710.34'

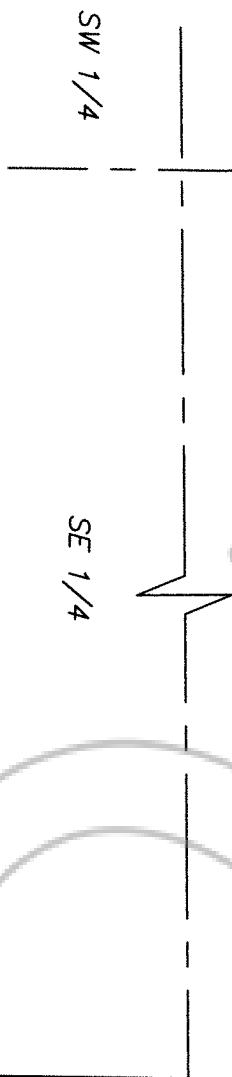
NE CORNER SECTION 36
POSITION ESTABLISHED FROM
HISTORIC EVIDENCE

25 30
36 31

FOUND BLM
BRASS CAP
S 1/4 CORNER
SECTION 30
T36N - R50E



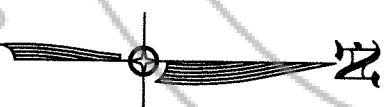
T36N - R49E, MDB & M
T36N - R50E, MDB & M



LEGEND

- = 2"x2"x4' WOOD POST LOCATION MONUMENT
- = 2"x2"x4' WOOD POST CLAIM CORNER
- ◇ = SECTION CORNER AS NOTED
- ◆ = 1/4 SECTION CORNER AS NOTED

SCALE: 1"=500'



FILED AT THE REQUEST OF Newmont Gold Co
 on April 21 19 99, at 22 mins, post 10 AM,
 RECORDS OF EUREKA COUNTY, NEVADA R.M. NEVADA
 File No. 172161 Fee \$ 15.00

OWNER & LOCATOR

NEWMONT GOLD COMPANY
 555 FIFTH STREET
 ELKO, NEVADA 89801

MAP
 OF
 LODGE CLAIM
 IN
 BGM 1

SECTION 36, T.36 N., R.49 E., M.D.B. & M.
 EUREKA COUNTY, NEVADA

NEWMONT GOLD COMPANY