

DRAWING NUMBER

DRAWING NUMBER

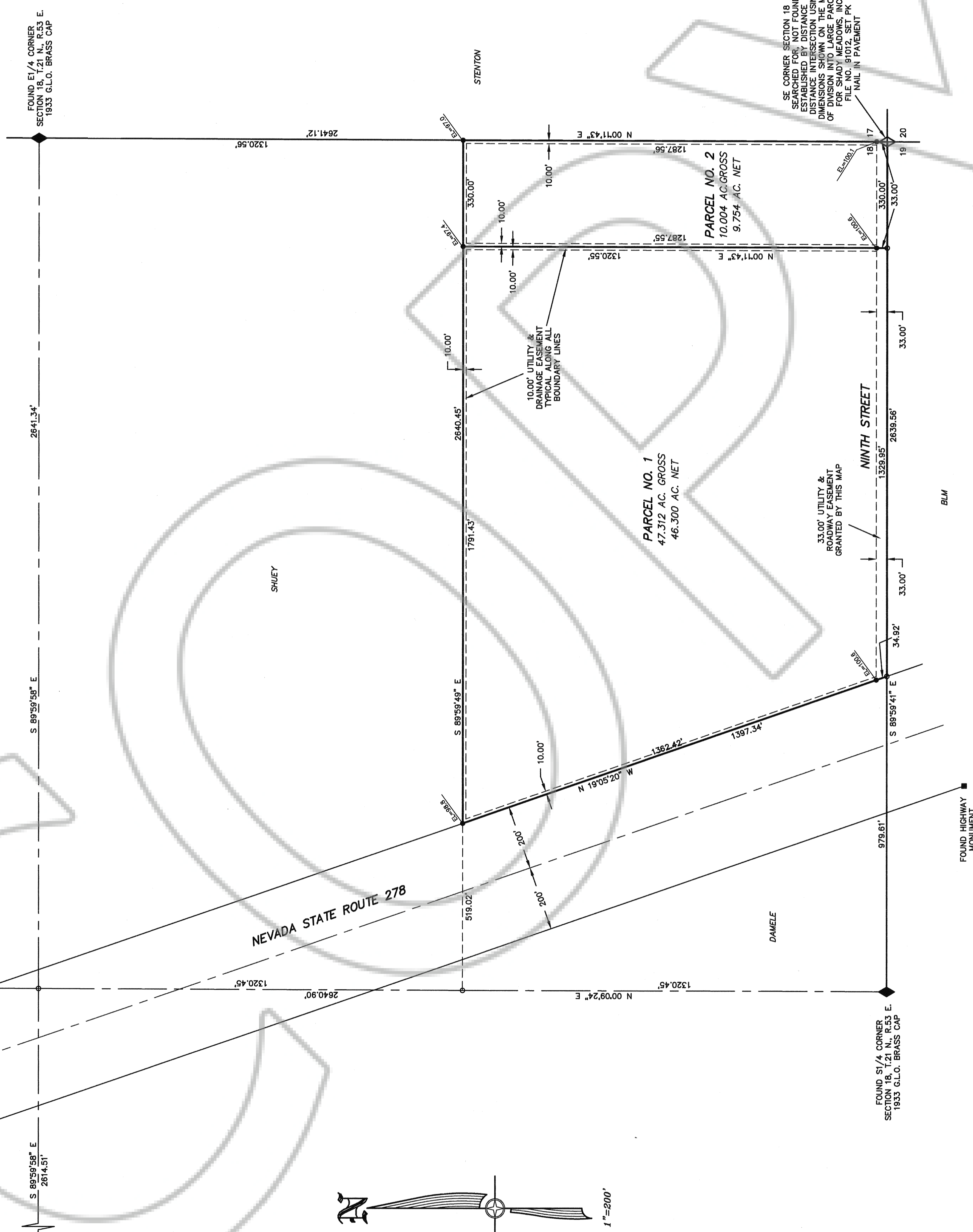
DRAWING NUMBER
172351

DRAWING NUMBER
Parcel
T21D R53E Sec 18
Eureka Producers Coop
6/20/99

FOUND 1/4 CORNER
SECTION 18, T.21 N., R.53 E.
1933 G.L.O. BRASS CAP

FOUND 1/4 CORNER
SECTION 18, T.21 N., R.53 E.
1933 G.L.O. BRASS CAP

FOUND 1/4 CORNER
SECTION 18, T.21 N., R.53 E.
1933 G.L.O. BRASS CAP



OWNERS CERTIFICATE

BEING FIRST DULY SWORN, THE UNDERSIGNED, JAMES E. GALLAGHER, PRESIDENT OF EUREKA PRODUCERS COOPERATIVE, AFFIRM AND SAY THAT THEY ARE THE SOLE OWNERS OF THE LAND TO BE DIVIDED BY THIS MAP, AND THEY CONSENT TO THIS LAND DIVISION.

EUREKA PRODUCERS COOPERATIVE

BY James E. Gallagher PRESIDENT
DATE July 1, 1999

**STATE OF NEVADA
COUNTY OF EUREKA**

SUBSCRIBED AND SWORN TO BEFORE ME, A NOTARY PUBLIC, IN AND FOR SAID STATE AND COUNTY THIS 1st DAY OF July, 1999.

NOTARY PUBLIC
Joan Shangle

JOAN SHANGLE
Notary Public - State of Nevada
Appointed & Licensed in Eureka County
No. 95284-1-Exp. 12/31/01

PLANNING COMMISSIONERS APPROVAL

AT A REGULAR MEETING OF THE EUREKA COUNTY REGIONAL PLANNING COMMISSION, STATE OF NEVADA, HELD ON THE 1st DAY OF July, 1999, THIS MAP WAS DULY APPROVED.

CHAIRPERSON
Chatterperson

COUNTY COMMISSIONERS APPROVAL

AT A REGULAR MEETING OF THE EUREKA COUNTY COMMISSIONERS HELD ON THE 1st DAY OF July, 1999, THIS MAP WAS DULY APPROVED.

CHAIRMAN, EUREKA COUNTY COMMISSIONERS
Robert E. Morley
EUREKA COUNTY CLERK
Robert E. Morley

ACCEPTANCE OF THIS PARCEL MAP BY EUREKA COUNTY DOES NOT CONSTITUTE A GUARANTEE THAT EACH OR ANY LOT SHOWN THEREON CONTAINS A LAWFUL BUILDING SITE.

FURTHER REPARCELING OF ANY PARCEL CREATED BY THIS MAP MAY BE NECESSARY TO MEET THE REQUIREMENTS OF GOVERNMENTAL AGENCIES WITH PERMIT AUTHORITY MUST BE MET.

SURVEYOR'S CERTIFICATE

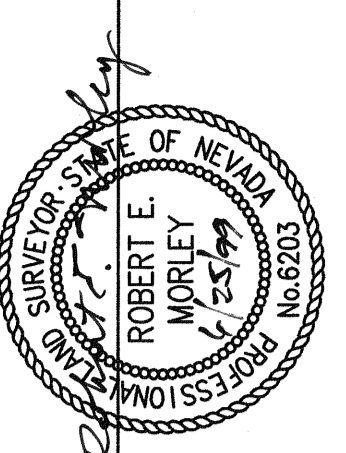
1. ROBERT E. MORLEY, A PROFESSIONAL LAND SURVEYOR LICENSED IN THE STATE OF NEVADA, CERTIFY THAT:

1. THIS PLAT REPRESENTS THE RESULTS OF A SURVEY CONDUCTED UNDER MY SUPERVISION AT THE INSTANCE OF THE EUREKA PRODUCERS COOPERATIVE.

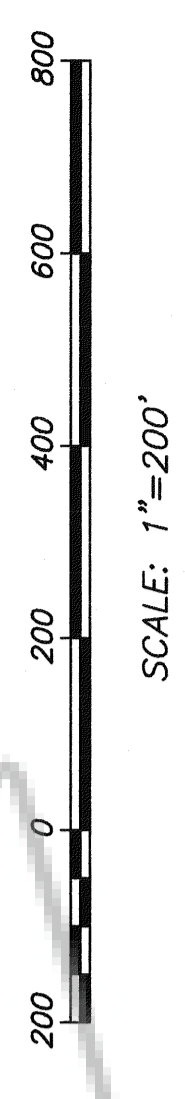
2. THE LANDS SURVEYED LIE WITHIN SECTION 18, T.21 N., R.53 E., M.D.B. & M., AND THE SURVEY WAS COMPLETED ON JUNE 22, 1999.

3. THIS PLAT COMPLIES WITH THE APPLICABLE STATE STATUTES AND ANY LOCAL ORDINANCES IN EFFECT ON THE DATE THAT THE GOVERNING BODY GAVE ITS FINAL APPROVAL.

4. THE MONUMENTS DEPICTED ON THE PLAT ARE OF THE CHARACTER SHOWN, AND THE POSITIONS INDICATED AND ARE OF SUFFICIENT NUMBER AND DURABILITY.



ROBERT E. MORLEY, P.L.S. - 6203



COUNTY TREASURER'S CERTIFICATE

THIS IS TO CERTIFY THAT PARCEL NO. 007-400-07 HAS NO DELINQUENCIES AND THAT TAXES ARE PAID THROUGH 6-20-99

EUREKA COUNTY TREASURER
Joan Shangle
DATE 7-1-99

NOTES:

- 1) THE TOTAL SUBDIVIDED AREA OF THIS MAP EQUALS 57.316 ACRES.
- 2) THE PARCELS SHOWN ON THIS MAP DO NOT LIE IN A FLOOD PLAIN.
- 3) BASIS OF BEARINGS: THE LINE BETWEEN THE FOUND WEST 1/4 CORNER & W. AS SHOWN ON THE MAP OF SECTION 18, T.21 N., R.53 E., M.D.B. & M., AS SHOWN ON THE MAP OF DIVISION INTO LARGE PARCELS FOR SHADY MEADOWS INC., FILE NO. 91012, AS S 89°59'58" E.
- 4) IN ADDITION TO ANY EASEMENTS SHOWN, THE PARCELS SHOWN ARE SUBJECT TO 10.00 FOOT DRAINAGE AND UTILITY EASEMENTS ALONG ALL BOUNDARY LINES.

LEGEND

- ◇ = SECTION CORNER AS NOTED
- = SET 5/8" REBAR WITH CAP MARKED PLS 8203
- ◆ = 1/4 SECTION CORNER AS NOTED
- = CALCULATED POINT, NOTHING FOUND, NOTHING SET
- = FOUND MONUMENT AS NOTED

FILING DATA

FILE NO. 172-351
FILED AT THE REQUEST OF HIGH DESERT ENGINEERING.
DATE July 20, 1999
TIME 1:53 P.M.
M.N. Rebeleath
EUREKA COUNTY RECORDER
Marvin Stewart, Deputy

PARCEL MAP FOR EUREKA PRODUCERS COOPERATIVE

IN SECTION 18, T.21 N., R.53 E., M.D.B. & M. EUREKA COUNTY, NEVADA

HIGH DESERT ENGINEERING
640 IDAHO STREET
ELIKA, NEVADA 89401
(775) 738-4053

99061