

DRAWING NUMBER

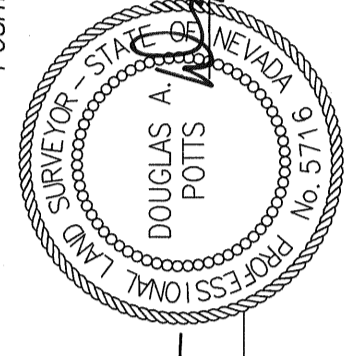
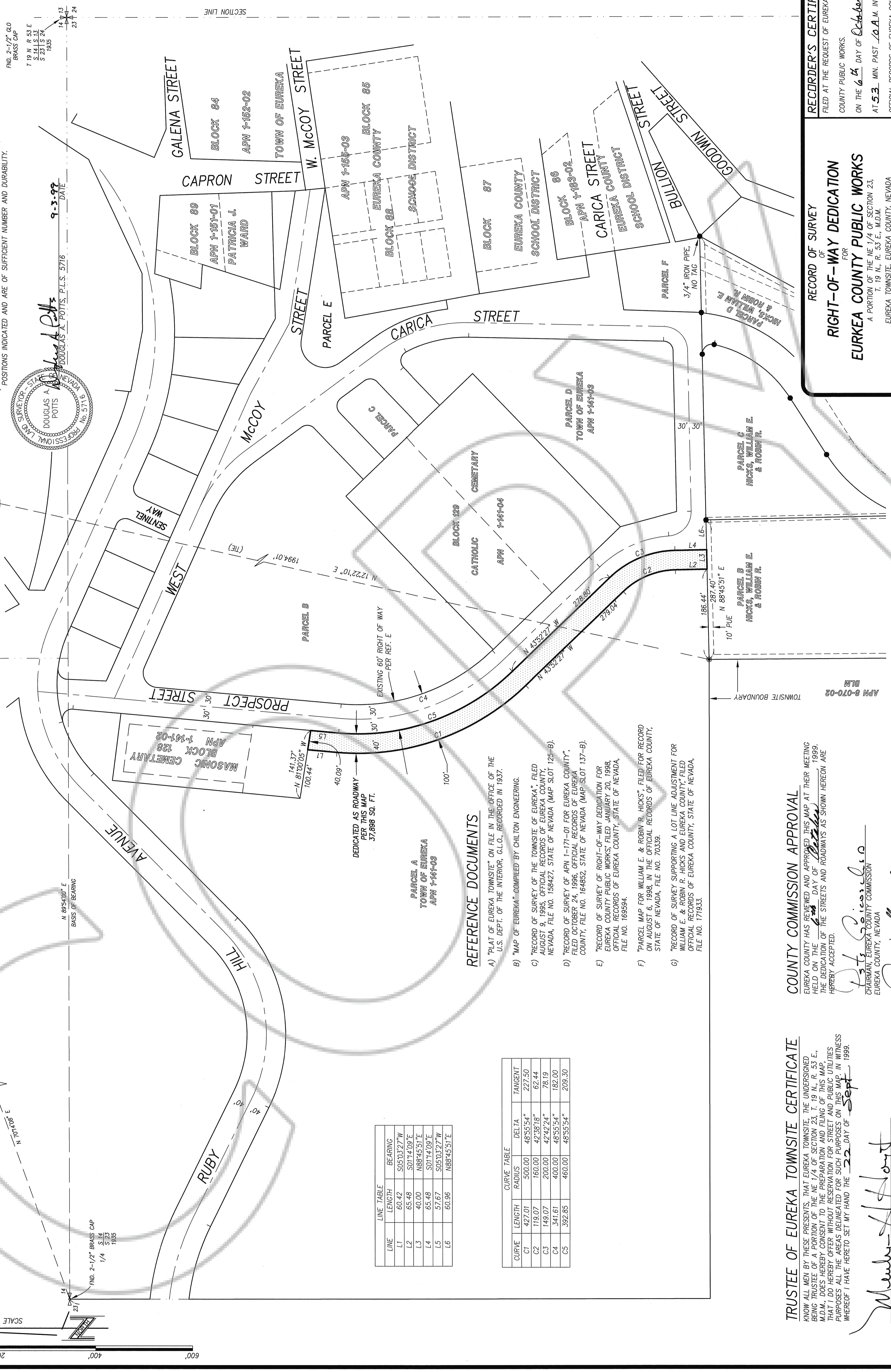
DRAWING NUMBER

DRAWING NUMBER
173053

DRAWING NUMBER
Right of Way
1211 R 532 Sec 23
Eureka County, Nevada

BASIS OF BEARING
THE BASIS OF BEARING FOR THIS SURVEY IS THE NORTH LINE OF THE NORTHEAST 1/4 OF SECTION 23, T. 19 N., R. 53 E., M.D.M., 1999, AS SHOWN ON REFERENCE DOCUMENTS A & B. THE BEARING OF SAID LINE BEING S 89°54' W.

- LEGEND**
- FOUND 5/8" REBAR W/CAP, PLS 5716, OR AS NOTED
 - ⊗ FOUND STD. GLO SECTION CORNER, AS NOTED
 - FOUND STD. GLO 1/4 CORNER, AS NOTED
 - ⊙ FOUND STD. BRASS CAP PER REFERENCE A
 - △ BRASS CAP - USGS STATION "TANK"



SURVEYOR'S CERTIFICATE
I, DOUGLAS A. POTTS, A PROFESSIONAL LAND SURVEYOR LICENSED IN THE STATE OF NEVADA, CERTIFY THAT:

- THIS PLAT REPRESENTS THE RESULTS OF A SURVEY CONDUCTED UNDER MY DIRECT SUPERVISION AT THE INSTANCE OF EUREKA COUNTY PUBLIC WORKS.
- THE LANDS SURVEYED LIE WITHIN A PORTION OF THE NE 1/4 OF SECTION 23, TOWNSHIP 19 NORTH, RANGE 53 EAST, M.D.M., AND THE SURVEY WAS COMPLETED ON AUGUST 6, 1998.
- THE APPLICABLE STATE STATUTES AND APPLICABLE STATE POLICIES AND ORDINANCES IN EFFECT ON THE DATE THAT THE GOVERNING BODY GAVE ITS FINAL APPROVAL.
- THE MONUMENTS DEPICTED ON THE PLAT ARE OF THE CHARACTER SHOWN, OCCUPY THE POSITIONS INDICATED AND ARE OF SUFFICIENT NUMBER AND DURABILITY.

REFERENCE DOCUMENTS

- "PLAT OF EUREKA TOWNSITE" ON FILE IN THE OFFICE OF THE U.S. DEPT. OF THE INTERIOR, G.L.O., RECORDED IN 1937.
- "MAP OF EUREKA" COMPILED BY CHILTON ENGINEERING.
- "RECORD OF SURVEY OF THE TOWNSITE OF EUREKA", FILED AUGUST 9, 1995, OFFICIAL RECORDS OF EUREKA COUNTY, NEVADA, FILE NO. 158427, STATE OF NEVADA (MAP SLOT 125-B).
- "RECORD OF SURVEY OF APN 1-171-01 FOR EUREKA COUNTY", FILED OCTOBER 24, 1996, OFFICIAL RECORDS OF EUREKA COUNTY, FILE NO. 164852, STATE OF NEVADA (MAP SLOT 137-B).
- "RECORD OF SURVEY OF RIGHT-OF-WAY DEDICATION FOR EUREKA COUNTY PUBLIC WORKS" FILED JANUARY 20, 1998, OFFICIAL RECORDS OF EUREKA COUNTY, STATE OF NEVADA, FILE NO. 165594.
- "PARCEL MAP FOR WILLIAM E. & ROBIN R. HICKS", FILED FOR RECORD ON AUGUST 6, 1998, IN THE OFFICIAL RECORDS OF EUREKA COUNTY, STATE OF NEVADA, FILE NO. 70339.
- "RECORD OF SURVEY SUPPORTING A LOT LINE ADJUSTMENT FOR WILLIAM E. & ROBIN R. HICKS AND EUREKA COUNTY", FILED OFFICIAL RECORDS OF EUREKA COUNTY, STATE OF NEVADA, FILE NO. 171933.

LINE	LENGTH	BEARING
L1	60.42	S05°03'27"W
L2	65.48	S01°14'09"E
L3	40.00	N88°45'51"E
L4	65.48	S01°14'09"E
L5	57.67	S05°03'27"W
L6	60.96	N88°45'51"E

CURVE	LENGTH	RADIUS	DELTA	TANGENT
C1	427.01	500.00	48°55'54"	227.50
C2	119.07	160.00	42°38'18"	62.44
C3	149.07	200.00	42°42'24"	78.19
C4	341.61	400.00	48°55'54"	182.00
C5	392.85	460.00	48°55'54"	209.30

TRUSTEE OF EUREKA TOWNSITE CERTIFICATE

KNOW ALL MEN BY THESE PRESENTS, THAT EUREKA TOWNSITE, THE UNDERSIGNED TRUSTEE OF A PORTION OF THE NE 1/4 OF SECTION 23, T. 19 N., R. 53 E., M.D.M., DOES HEREBY CONSENT TO THE PREPARATION AND FILING OF THIS MAP, THAT I DO HEREBY OFFER WITHOUT RESERVATION FOR STREET AND PUBLIC UTILITIES PURPOSES ALL THE AREAS DELINEATED FOR SUCH PURPOSES ON THIS MAP. IN WITNESS WHEREOF I HAVE HERETO SET MY HAND THE 22 DAY OF Sept 1999.

Merlon H. Hoyt
MERLON H. HOYT, DISTRICT JUDGE, 2ND-DISTRICT
ATTEST: *Jack Standa*
CLERK, EUREKA COUNTY

COUNTY COMMISSION APPROVAL

EUREKA COUNTY HAS REVIEWED AND APPROVED THIS MAP AT THEIR MEETING HELD ON THE 22 DAY OF September 1999. THE DEDICATION OF THE STREETS AND ROADWAYS AS SHOWN HEREON ARE HEREBY ACCEPTED.

Pete Goicoechea
CHAIRMAN, EUREKA COUNTY COMMISSION
EUREKA COUNTY, NEVADA
ATTEST: *Jack Standa*
CLERK, EUREKA COUNTY

RECORD OF SURVEY
RIGHT-OF-WAY DEDICATION
FOR
EUREKA COUNTY PUBLIC WORKS
A PORTION OF THE NE 1/4 OF SECTION 23,
T. 19 N., R. 53 E., M.D.M.
EUREKA TOWNSITE, EUREKA COUNTY, NEVADA.

DATE: September 3, 1999
JOB NO.: 3632.015
SHEET 1 OF 1

RECORDERS CERTIFICATE
FILED AT THE REQUEST OF EUREKA COUNTY PUBLIC WORKS.
ON THE 24 DAY OF October 1999,
AT 5:30 MIN. PAST 10 A.M. IN THE OFFICIAL RECORDS OF EUREKA COUNTY, NEVADA.
FILE NUMBER: 173053
FEE: \$110