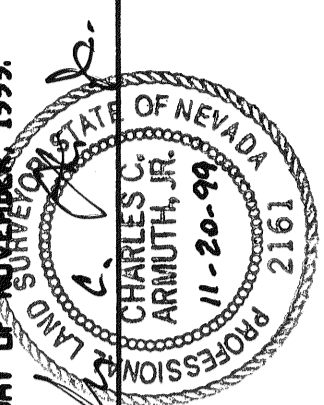
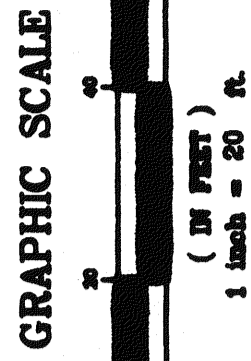


LAND SURVEYOR'S CERTIFICATE

I, CHARLES C. ARMUTH, JR., A PROFESSIONAL LAND SURVEYOR LICENSED IN THE STATE OF NEVADA, DO HEREBY CERTIFY THAT THIS PLAT IS A TRUE AND ACCURATE MAP OF THE LAND SURVEYED UNDER MY SUPERVISION AND DIRECTION BETWEEN THE 13th DAY OF SEPTEMBER, 1999, AND THE 17th DAY OF NOVEMBER, 1999; THAT SAID SURVEY IS FULLY AND CORRECTLY DESIGNATED THEREON. SURVEY COMPLETED ON THE 17th DAY OF NOVEMBER, 1999.



CHARLES C. ARMUTH, JR., P.L.S.
 NEVADA REGISTRATION NO. 2161
 421 RAILROAD STREET
 ELKO, NEVADA 89801
 PH. (702) 738-7369
 FAX (702) 738-7368



RECORD OF SURVEY
 OF A PORTION OF
 BLOCK 14
 TOWN OF EUREKA, NEVADA
 FOR
 JERRY AND ED ANDERSON
 WITHIN THE
 SW 1/4 SW 1/4 OF SECTION 13,
 T.19N., R.53E., M.D.B.&M.

SURVEYOR: CHARLES C. ARMUTH, JR., P.L.S.
 421 RAILROAD STREET
 ELKO, NEVADA 89801
 PHONE: 775-738-7369 FAX: 775-738-7368
 ACAD DRAWING: ANDERSON\EUREKA-ADN-2ADWG

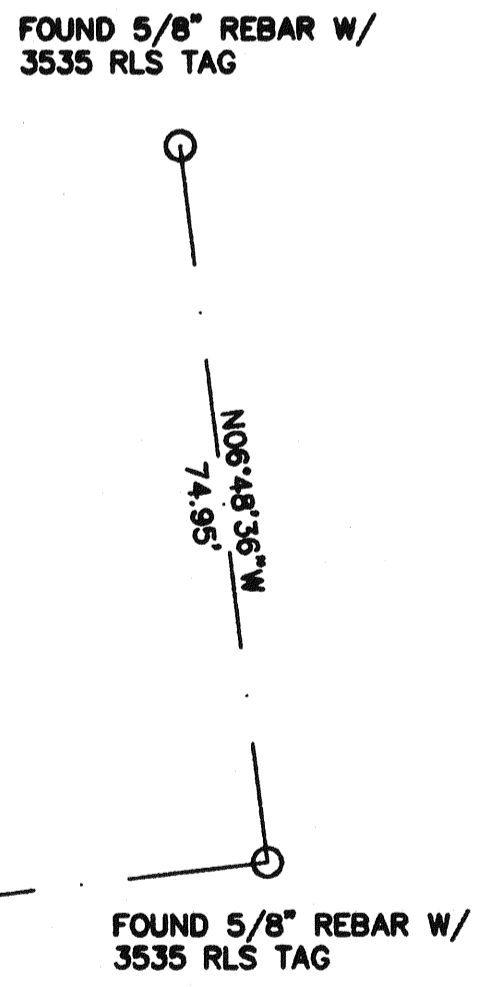
COUNTY RECORDER'S CERTIFICATE

FILE NO. 173387 FILED AT THE REQUEST OF
Jerry and Ed Anderson ON THE 22nd DAY
 OF November, 1999
 AT 2:14 MINUTES PAST 2 O'CLOCK P.M.

M.N. Rebeleati
 EUREKA COUNTY RECORDER
Mervene Stineset, Deputy

LEGEND

- PROPERTY CORNER SET
5/8" REBAR W/ PLS 2161 YELLOW CAP
- PROPERTY CORNER FOUND
DESCRIBED AS SHOWN ON MAP
- SURVEY POINT FOUND
DESCRIBED AS SHOWN ON MAP
- × NOTHING FOUND, NOTHING SET



DRAWING NUMBER

DRAWING NUMBER
 173387

DRAWING NUMBER
 173387

DRAWING NUMBER
 173387