

13

24

19

24

25

30

25

31

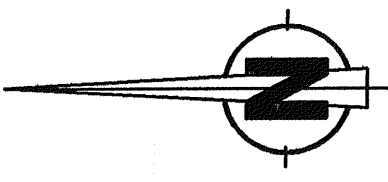
36

5

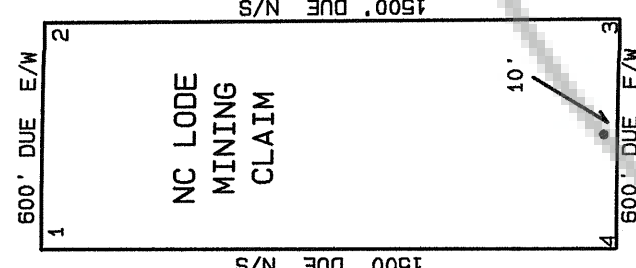
1

6

5



SCALE: 1 INCH = 500 FEET



TYPICAL CLAIM & CORNER NUMBERS

LOCATION DATES:

SEPTEMBER 11, 1899 NC (1-150)
SEPTEMBER 12, 1899 NC (57-68)

NOTES:

ALL CLAIMS ARE 600' X 1500' EXCEPT WHERE NOTED.
ALL MONUMENTS ARE 2"x2"x4" WOOD POST WITH METAL TAG ATTACHED.
ALL LOCATION MONUMENTS ARE SET 10' IN FROM THE END CENTER OF THE CLAIM EXCEPT WHERE NOTED.

□ INDICATES A FOUND SECTION CORNER (BRASS CAP).

TIE POINT:

THE SW CORNER OF SECTION 36, T24N, R48.5E, M.D.M.
IS COMMON CORNER WITH THE SW CORNER #4 OF NC 44.

R48E
R48.5E

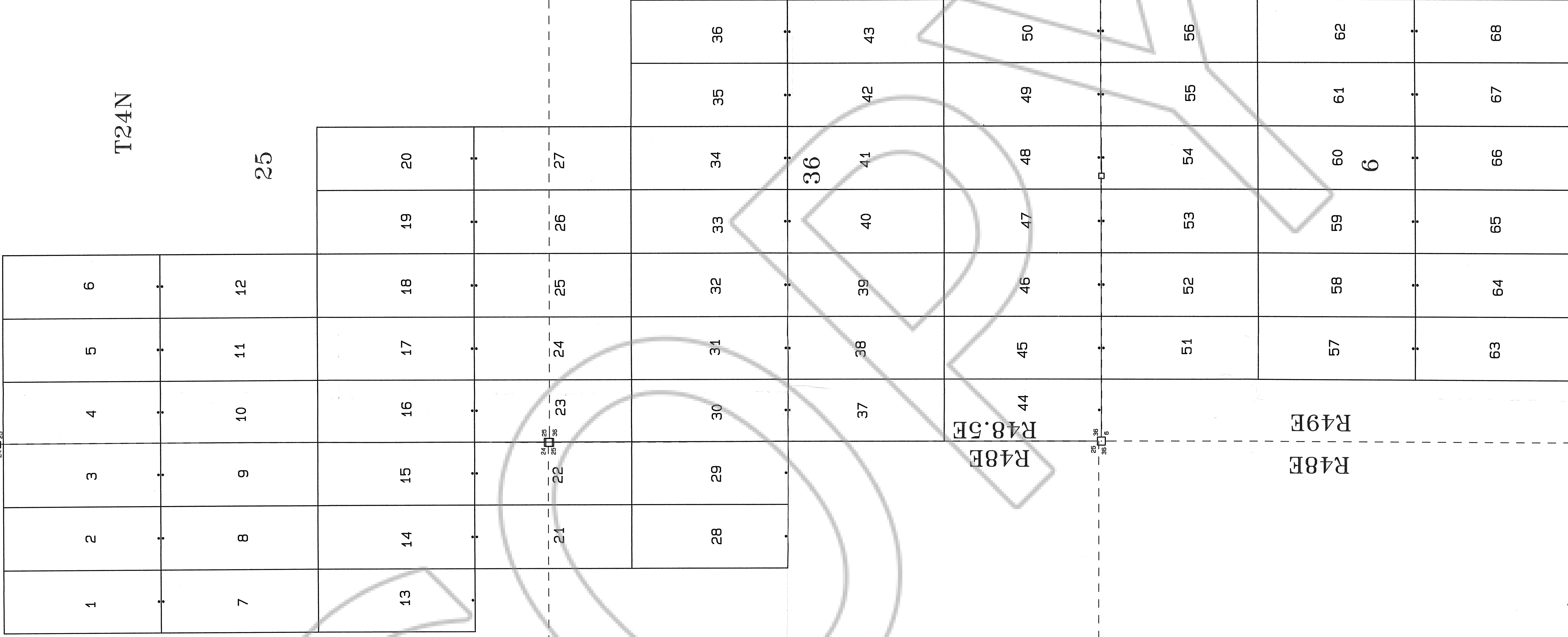
T24N

R48.5E
R49E

R48E
R48.5E

R48E
R49E

T24N
T23.5N



FILED AT THE REQUEST OF *Tonkin Springs LLC*
ON *Dec 6* 19 *99* at *11:37* AM, PAGES *36* W.
RECORDS OF EUREKA COUNTY, NEVADA M. N. RECORDS DIVISION
FILE NO. *173557* Page *1* of *2*

NC LODGE MINING CLAIMS

NO'S (1-68).

SECTIONS 24, & 25, T24N, R48E, M.D.M.

SECTION 6, T23.5N, R49E, M.D.M.

SECTIONS 25, & 36, T24N, R48.5E M.D.M.

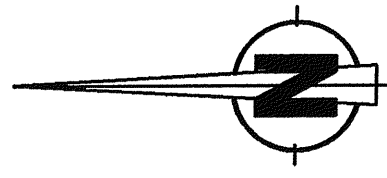
EUREKA COUNTY, NEVADA

SHEET 1 OF 2

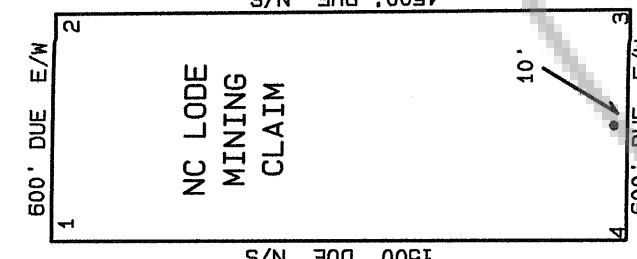
TONKIN SPRINGS LLC.
P.O. BOX 557
EUREKA, NEVADA 89316

T24N
T23N

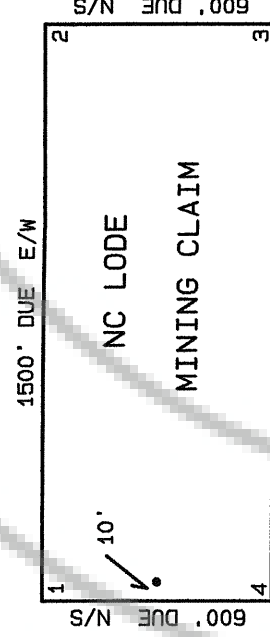
T23.5N
T23N



SCALE: 1 INCH = 500 FEET



TYPICAL CLAIM & CORNER NUMBERS



12

18

LOCATION DATES:

OCTOBER 2, 1999 ----- NC (69-107).
OCTOBER 3, 1999 ----- NC (108-122).

NOTES:

ALL CLAIMS ARE 600' X 1500' EXCEPT WHERE NOTED.
ALL MONUMENTS ARE 2"x2"x4" WOOD POST WITH METAL TAG ATTACHED.
ALL LOCATION MONUMENTS ARE SET 10' IN FROM THE END CENTER
OF THE CLAIM EXCEPT WHERE NOTED.

□ INDICATES A FOUND SECTION CORNER (BRASS CAP).

TIE POINT:

FROM THE SE CORNER OF SECTION 12, T24N, R48.5E, M.D.M., BEAR
DUE NORTH 50 FEET TO THE SE CORNER #3 OF NC 96.

FROM THE EAST 1/4 CORNER OF SECTION 24, T24N, R48.5E, M.D.M.,
BEAR DUE EAST 212 FEET TO THE SE CORNER # 3 OF NC 112.

R48.5E R49E

12

T24N

R48E R48.5E

69	82	95
70	83	96
71	84	97
72	85	98
73	86	99
74	87	100
75	88	101
76	89	102
77	90	103
78	91	104
79	92	105
80	93	106
81	94	107

13

R48E R48.5E

19

108	109	110	111	112
24	:	:	:	:
113	114	115	116	117
118	119	120	121	122

24

T24N

R48.5E R49E

25

NC LOD MINING CLAIMS

NUMBERS 69-122

SECTIONS 12,13,24,&25, T24N, R48.5E, M.D.M.
SECTIONS 19, &30, T24N, R49E, M.D.M.
EUREKA COUNTY, NEVADA

TONKIN SPRINGS LLC.
P.O. BOX 557
EUREKA, NEVADA 89316