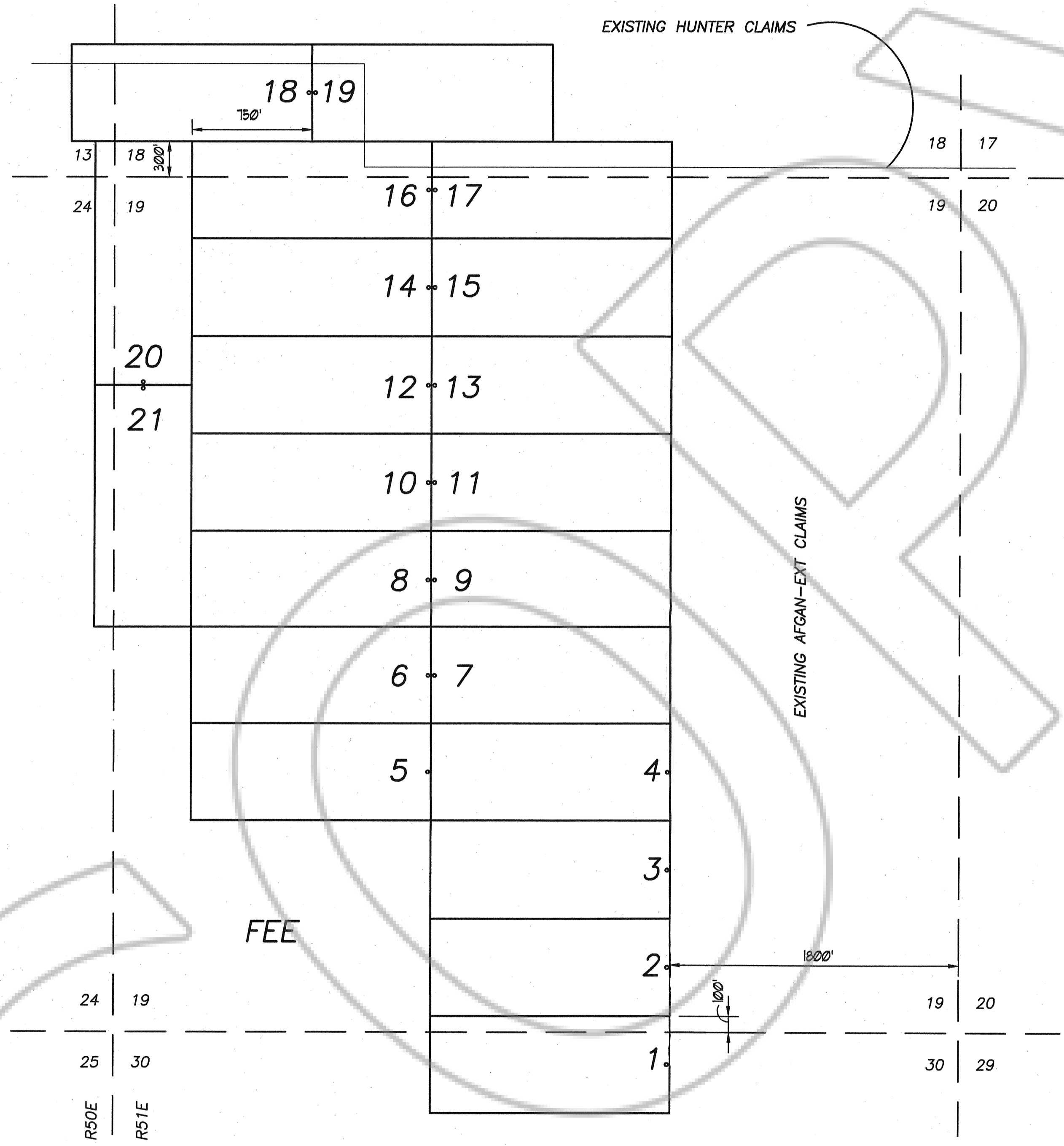


T22N

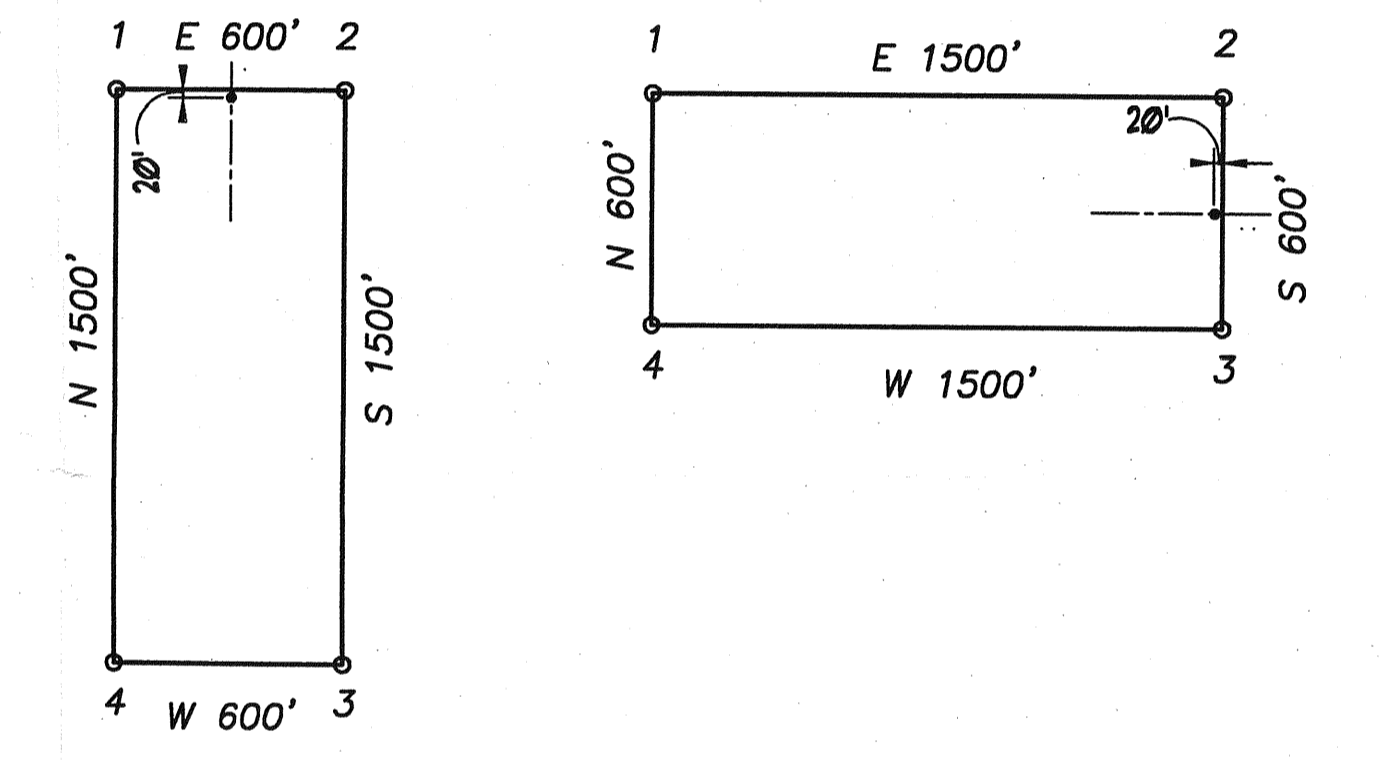


LOCATOR:  
 White Knight Gold (U.S.), Inc.  
 760 Warm Springs AVE., Suite A  
 Boise, ID 83712

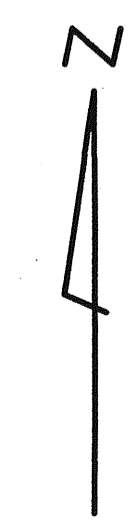
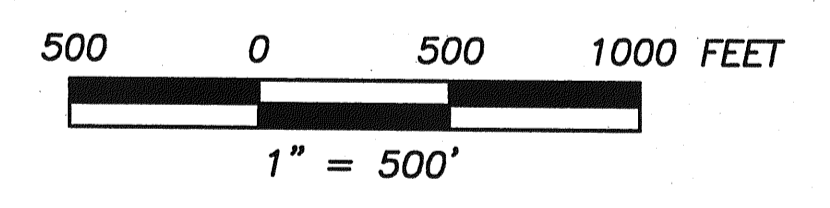
LOCATION DATES:  
 11/12/99 BOB 1-19  
 11/13/99 BOB 20 & 21

TIE:  
 THE NE CORNER BOB 1  
 BEARS 1800' WEST & 100' N  
 FROM THE S.E. CORNER OF  
 SECTION 19 T22N R51E

TYPICAL CLAIM: with corner numbering.



NOTE: All claims measure 1500'x600'  
 All location monuments shown as "o", are set 20' into claim.  
 All monuments are 1 1/2" x 1 1/2" x 4' wood posts  
 with scribed metal tags.



**BOB ( 1-21 )**  
**LODE MINING CLAIMS**  
 SEC. 18,19, & 30 T22N, R51E  
 SEC. 13,24 T22N, R50E  
 Eureka County, Nevada

January 10, 2000 Map 1 of 1