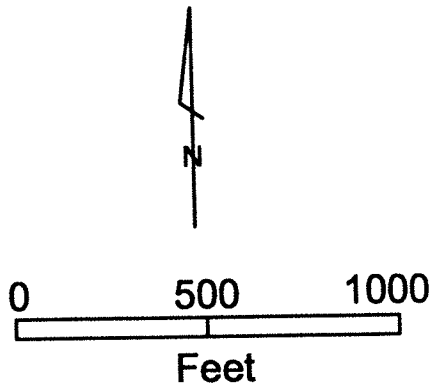


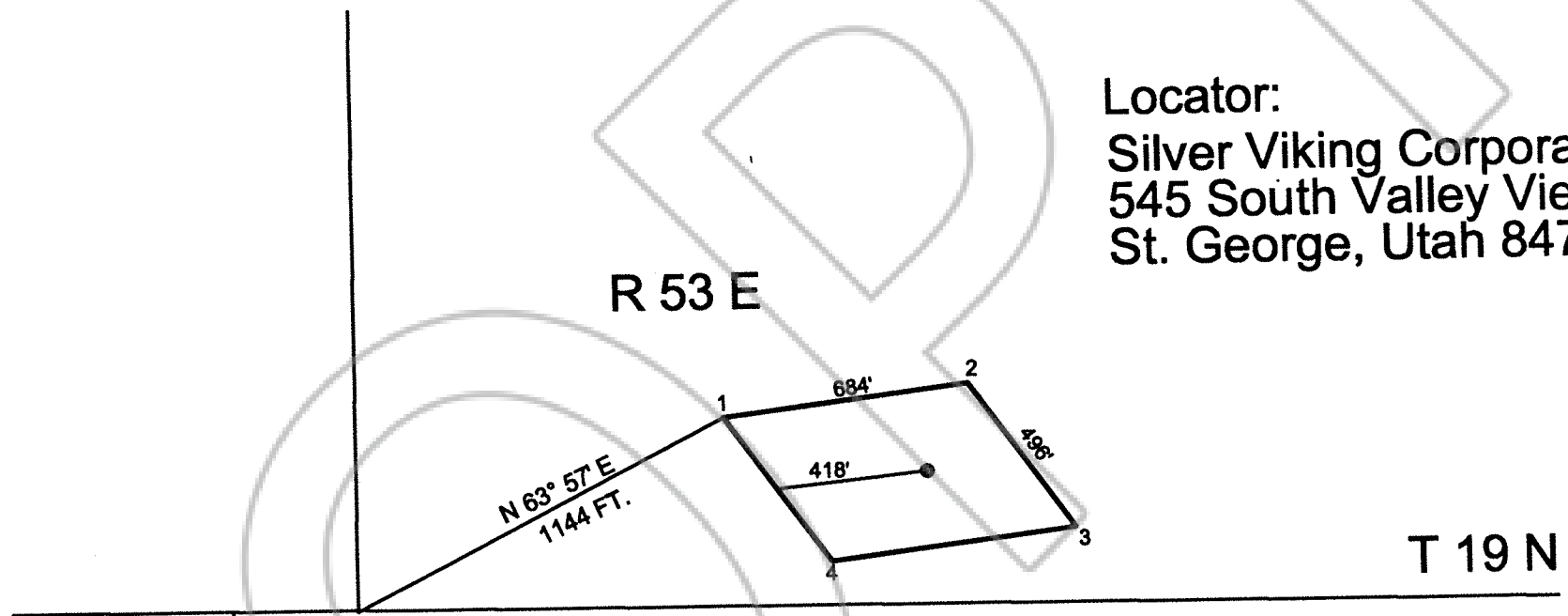
# Grover Cleveland Lode Claim Amended Location Map

Section 34, T19N, R53E, Eureka County, Nevada

8-23-2000



Locator:  
Silver Viking Corporation  
545 South Valley View Drive, #100  
St. George, Utah 84770



FILED AT THE REQUEST OF Cy & Wesley  
on Sept 12 20 00 at 5:53 mins. past 2 P.M.  
RECORDS of EUREKA COUNTY, NEVADA M. N. REBALEATI, Recorder  
File No. 175144 Fee \$ 15.00

Original Location Date: October 24, 1998  
Amended Location Date: July 12, 2000