

OWNERS CERTIFICATE

BEING FIRST DULY SWORN THE UNDERSIGNED, ROBERTA M. DAMELE AFFIRMS AND SAYS THAT SHE IS THE SOLE OWNER OF THE LAND TO BE DIVIDED BY THIS MAP, AND SHE CONSENTS TO THIS LAND DIVISION.

Roberta M. Damele
 ROBERTA M. DAMELE
 DATE 8/18/2000



STATE OF NEVADA
 COUNTY OF EUREKA

SUBSCRIBED AND SWORN TO before me, a Notary Public, in and for said State and County this 18th day of August, 2000.

Gladys Goicoechea
 NOTARY PUBLIC

PLANNING COMMISSIONER'S APPROVAL

AT A REGULAR MEETING OF THE EUREKA COUNTY REGIONAL PLANNING COMMISSION, STATE OF NEVADA, HELD ON September 14, 2000, THIS MAP WAS DULY APPROVED.

Michael Rebalcasti
 CHAIRPERSON

COUNTY COMMISSIONER'S APPROVAL

AT A REGULAR MEETING OF THE EUREKA COUNTY COMMISSIONERS HELD ON September 14, 2000, THIS MAP, CONSISTING OF ONE SHEET WAS PRESENTED AS A PROPOSED PARCEL MAP IN SECTION 35, T.21 N., R.53 E., M.D.B. & M., AND THE SURVEY WAS APPROVED FOR THE PURPOSES OF THE STREET, AND ROAD RIGHTS OF WAY AND PUBLIC UTILITY PURPOSES OF THE COUNTY UNTIL THEY ARE IMPROVED TO COUNTY STANDARDS NOT ACCEPTED BY THE EUREKA COUNTY DEPARTMENT OF PUBLIC WORKS, AND EXPRESSLY ACCEPTED BY RESOLUTION OF THE BOARD OF EUREKA COUNTY COMMISSIONERS.

Robert E. Morley
 CHAIRMAN, EUREKA COUNTY COMMISSIONERS
Robert E. Morley
 EUREKA COUNTY CLERK

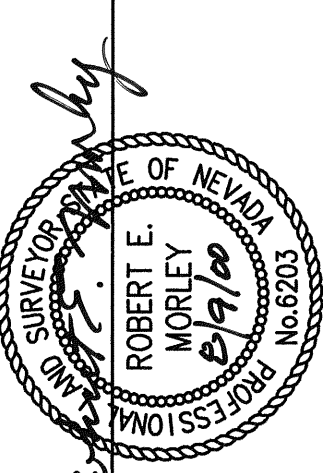
ACCEPTANCE OF THIS PARCEL MAP BY EUREKA COUNTY DOES NOT CONSTITUTE A GUARANTEE THAT EACH OR ANY LOT SHOWN THEREON CONTAINS A LAWFUL BUILDING SITE.

FURTHER REPARCELING OF ANY PARCEL CREATED BY THIS MAP MAY BE SUBJECT TO THE PROVISIONS OF NRS 278.462.3 PERMITTING IMPOSITION OF SURVEYING STANDARDS, BUT NOT GREATER IMPROVEMENTS THAN REQUIRED FOR SUBDIVISIONS.

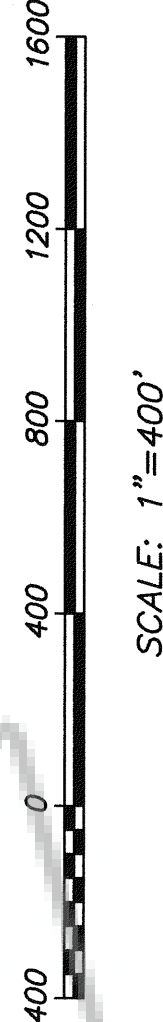
ALL REQUIREMENTS OF GOVERNMENTAL AGENCIES WITH PERMIT AUTHORITY MUST BE MET.

SURVEYOR'S CERTIFICATE

I, ROBERT E. MORLEY, A PROFESSIONAL LAND SURVEYOR LICENSED IN THE STATE OF NEVADA, CERTIFY THAT:
 1. THIS PLAT REPRESENTS THE RESULTS OF A SURVEY CONDUCTED UNDER MY DIRECT SUPERVISION AT THE INSTANCE OF ROBERTA M. DAMELE.
 2. THE LANDS SURVEYED LIE WITHIN SECTION 35, T.21 N., R.53 E., M.D.B. & M., AND THE SURVEY WAS COMPLETED ON JULY 27, 2000.
 3. THIS PLAT COMPLIES WITH THE APPLICABLE STATE STATUTES AND ANY LOCAL ORDINANCES IN EFFECT ON THE DATE THAT THE GOVERNING BODY GAVE ITS FINAL APPROVAL.
 4. THE MONUMENTS DEPICTED ON THE PLAT ARE OF THE CHARACTER SHOWN, OCCUPY THE POSITIONS INDICATED AND ARE OF SUFFICIENT NUMBER AND DURABILITY.



ROBERT E. MORLEY, P.L.S. 8203



RECORDER'S CERTIFICATE

FILE NO. 175165
 FILED AT THE REQUEST OF
 HIGH DESERT ENGINEERING,
 DATE September 21, 2000
 TIME 4:03 P.M.
Michael Rebalcasti
 EUREKA COUNTY RECORDER

NOTES:

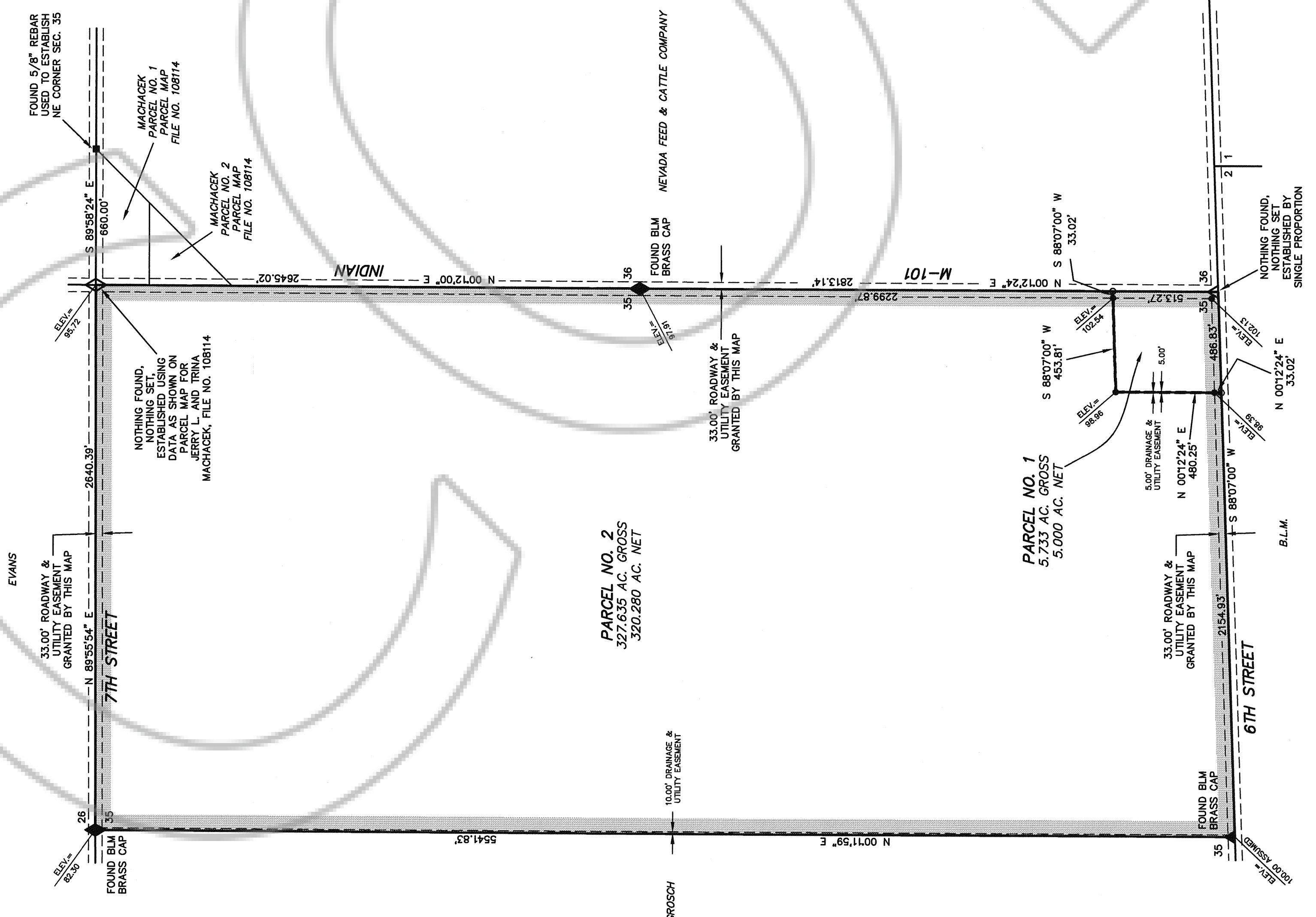
- 1) THE TOTAL SUBDIVIDED AREA OF THIS MAP EQUALS 333.368 ACRES.
- 2) THE PARCELS SHOWN ON THIS MAP DO NOT LIE IN A FLOOD PLAIN.
- 3) BASIS OF BEARINGS: THE LINE BETWEEN THE FOUND SOUTH 1/4 CORNER OF SECTION 35 AND THE FOUND SOUTHWEST CORNER OF SECTION 36, T.21 N., R.53 E., M.D.B. & M., SHOWN ON THE BLM SURVEY PLAT AS N 88°07'00" E.
- 4) IN ADDITION TO ANY EASEMENTS SHOWN, THE PARCELS SHOWN ARE SUBJECT TO 10.00 FOOT DRAINAGE AND UTILITY EASEMENTS ALONG ALL SURVEY BOUNDARIES AND 5.00 FOOT DRAINAGE AND UTILITY EASEMENTS ALONG ALL INTERIOR BOUNDARY LINES.

COUNTY TREASURER'S CERTIFICATE

THIS IS TO CERTIFY THAT PARCEL NO. 007-515-18 HAS NO DELINQUENCIES AND THAT TAXES ARE PAID THROUGH 6-30-2001
Roberta M. Damele
 EUREKA COUNTY TREASURER
 DATE 8-25-00

LEGEND

- ◇ = SECTION CORNER AS NOTED
- = SET 5/8" REBAR WITH CAP MARKED PLS 6203
- ◆ = 1/4 SECTION CORNER AS NOTED
- = FOUND MONUMENT AS NOTED
- = CALCULATED POINT, NOTHING FOUND, NOTHING SET



PARCEL MAP FOR
ROBERTA M. DAMELE
 IN
 E1/2 OF SECTION 35, T.21 N., R.53 E., M.D.B. & M.
 EUREKA COUNTY, NEVADA