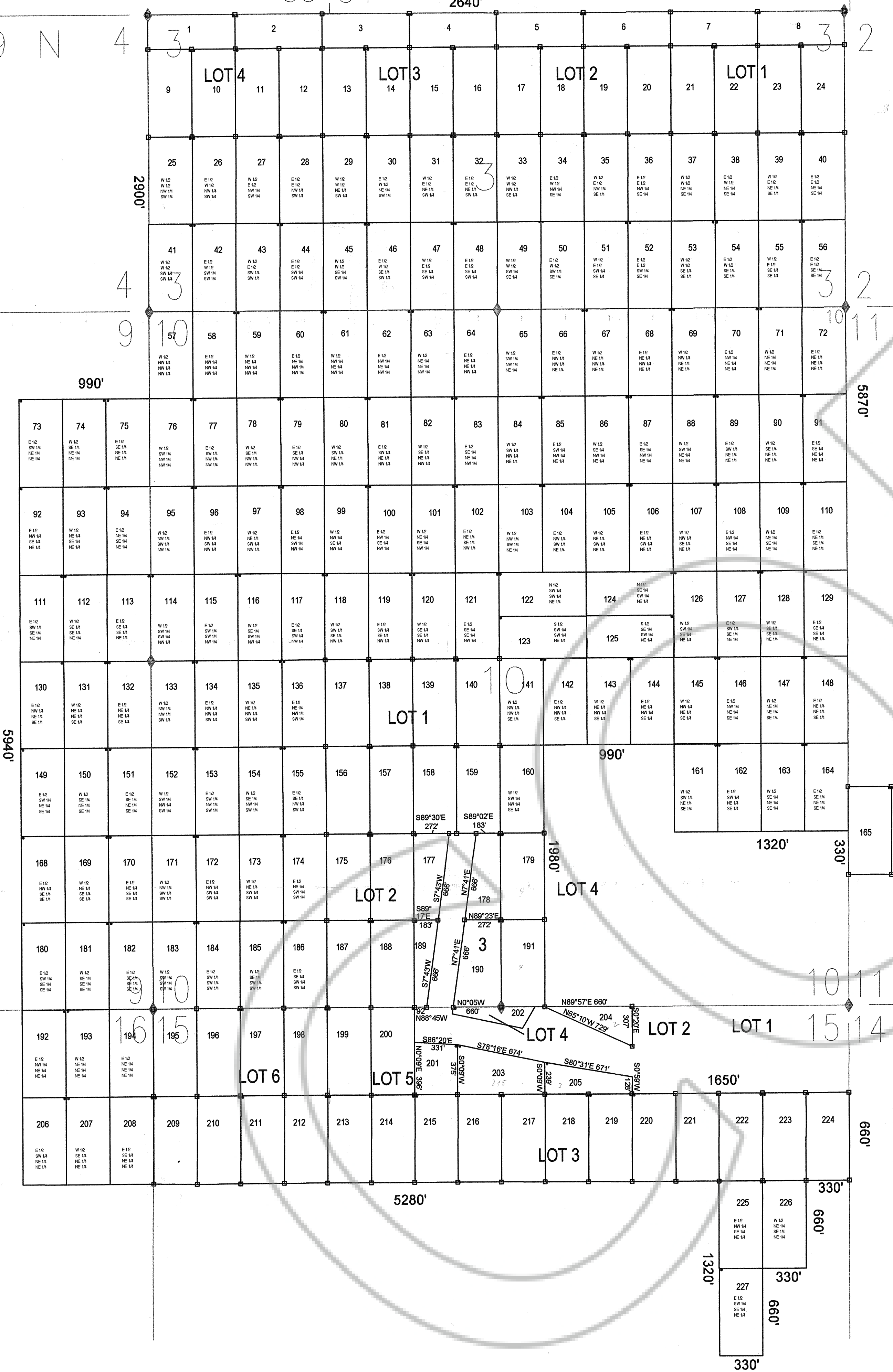


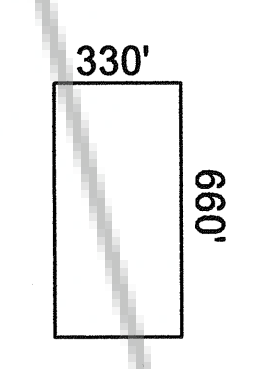
T 20 N
T 19 N

33 34

2640'



TYPICAL CLAIM

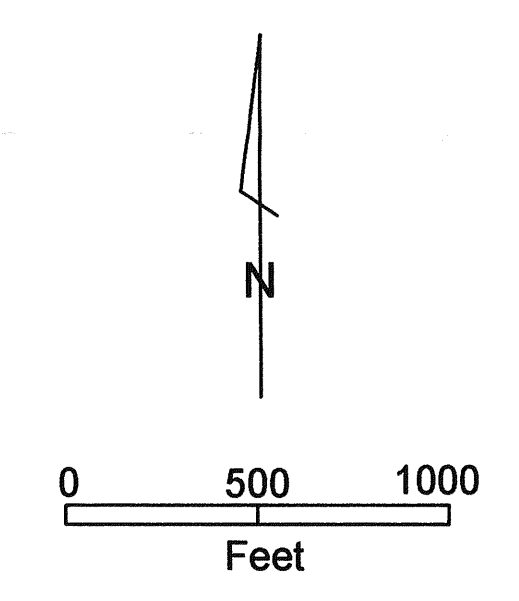


- LOCATION MONUMENTS
- CORNER MONUMENTS
- ALL CLAIM MONUMENTS ARE 2" X 2" WOOD POSTS WITH METAL TAGS
- ◆ FOUND SECTION CORNER

Location Dates:

- 9-2-2000 RHMS 34-36, 51-52, 103-108, 122-126, 141-144
- 9-3-2000 RHMS 88-89, 127-129, 145-148, 152-157, 161-164, 171-176, 68, 69
- 9-4-2000 RHMS 149-151, 158-160, 168-170, 177-186
- 9-5-2000 RHMS 111-121, 130-140
- 9-6-2000 RHMS 57-59, 73-77, 84-85, 92-98, 101-102
- 9-7-2000 RHMS 41-50, 60-67, 78-83, 86-87, 99-100
- 9-8-2000 RHMS 1-4, 9-16, 25-30
- 9-9-2000 RHMS 5-8, 17-24, 31-33, 37-38, 53-54
- 9-11-2000 RHMS 39-40, 55-56, 70-72, 90-91, 109-110, 165-167, 187-191
- 9-12-2000 RHMS 192-203, 206-211
- 9-13-2000 RHMS 204-205, 212-219
- 9-14-2000 RHMS 222-227
- 9-15-2000 RHMS 220-221

Locator:
 Homestake Mining Company of California
 1600 Riviera Ave. Suite 200
 Walnut Creek, California 94596-3568



RHMS Millsite Claims
 Sections 3,9,10,11,15,16 T19N, R53E
 Eureka County, Nevada
 9-19-2000

FILED AT THE REQUEST OF *Homestake Mining Co.*
 on *Oct 31* 20 *00*, at *6* mins past *2 P*
 RECORDS OF EUREKA COUNTY, NEVADA BY *H. H. REBER, Esq., Recorder*
 File No. *3406.00*