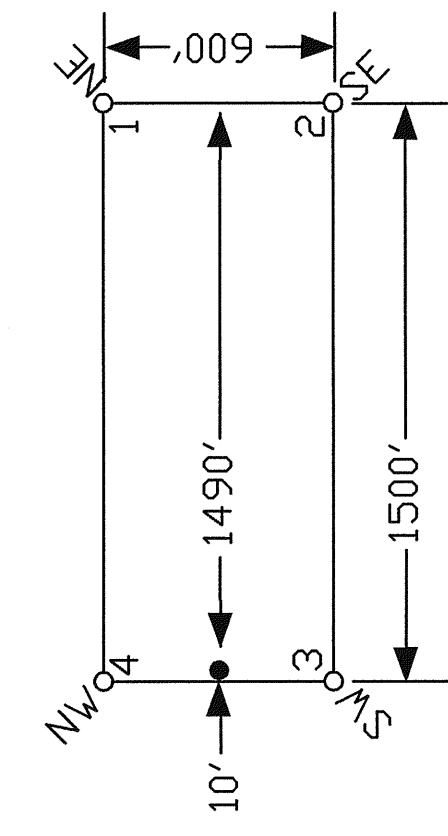


TYPICAL CLAIMS



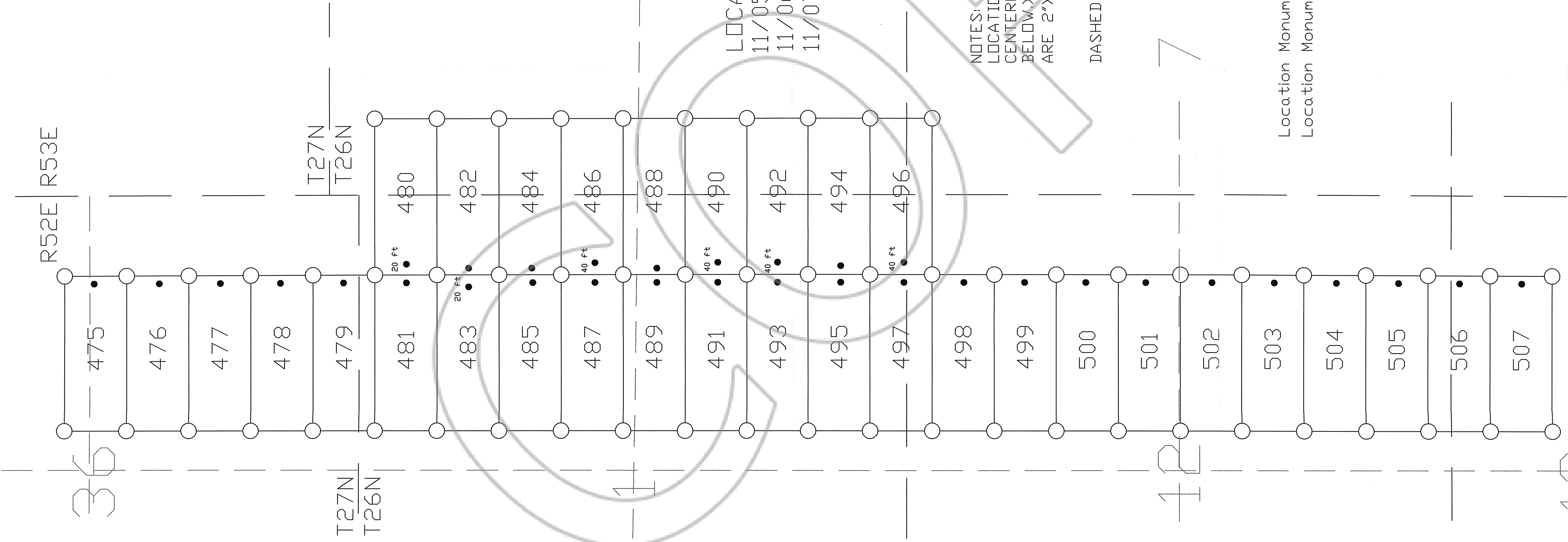
LOCATION DATES:

- 11/05/00 - Phoenix 475, 477-489
- 11/06/00 - Phoenix 490-497
- 11/07/00 - Phoenix 476, 498-507

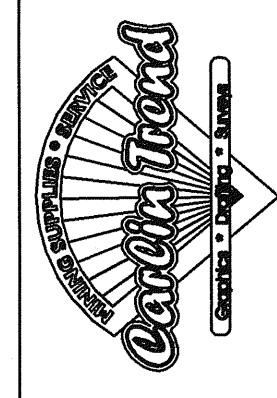
NOTES:
 LOCATION MONUMENTS SET 10' FROM CLAIM END CENTERLINES UNLESS OTHERWISE INDICATED. (SEE LIST BELOW) ALL LOCATION MONUMENTS AND CLAIM POSTS ARE 2"X2"X4' WOODEN STAKES.

DASHED SECTION LINES INDICATE PROJECTED SECTIONS.

Location Monuments Offset 20 Feet: 480, 483
 Location Monuments Offset 40 Feet: 486, 490, 492, 496



FILED AT THE REQUEST OF *Golden Gryphon USA, Inc.*
 on *11/12* at *11:30* AM
 RECORDS OF EUREKA COUNTY, NEVADA, IN REBALANCE Recorder
 File No. *175788* Fee \$ *49.50*



Golden Gryphon USA Inc.
 1400 Tanager Place RR21, Roberts Creek, BC V0N 2W1
 Phoenix Claims
 T26,27N R52,53E; Eureka County, Nevada

DATE: *11/12/00* DRAWN BY: *RS*
 3710 SILVER STREET ELKO, NV 89801
 PH: (775) 778-0668 FAX: (775) 778-0667
 December 2000 1"=500'

18