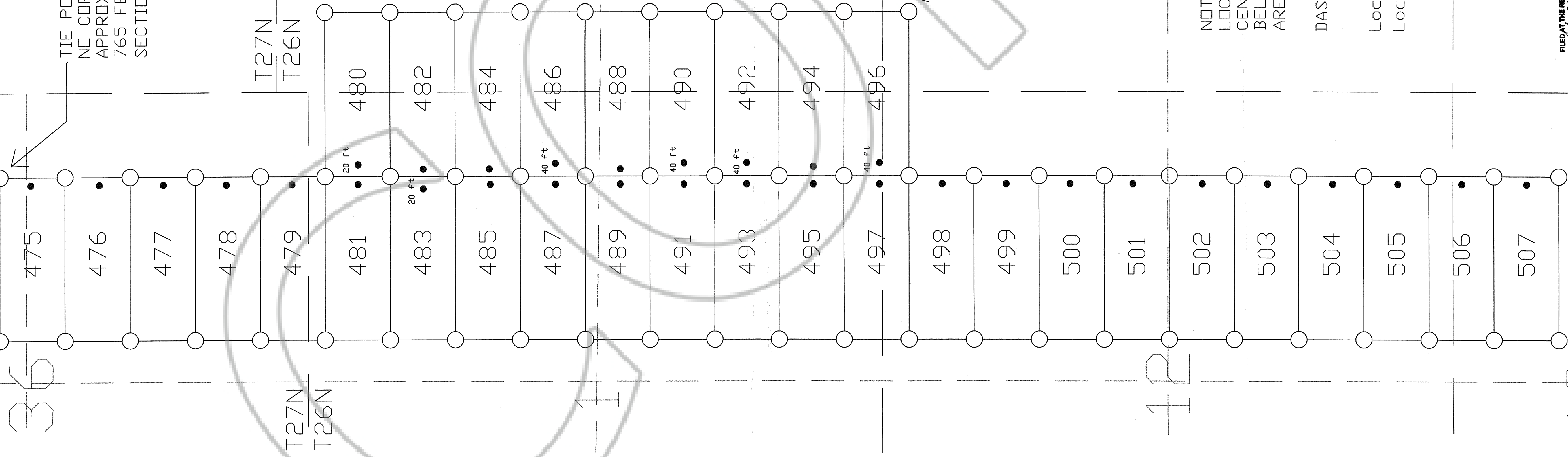


R52E R53E

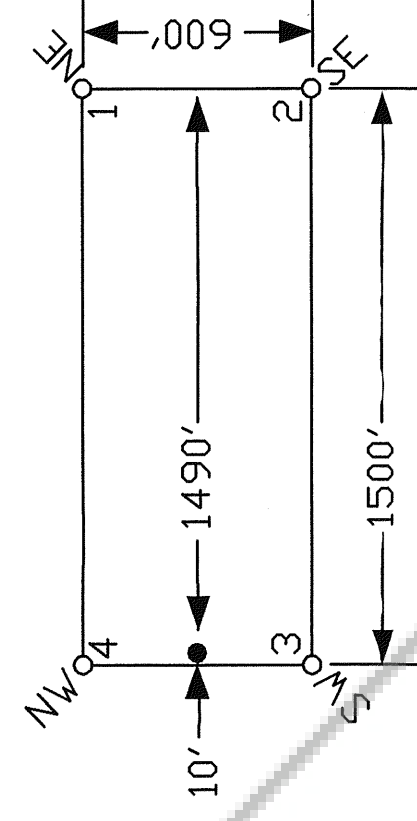
TIE POINT DATA:

NE CORNER OF PHOENIX 475 IS LOCATED APPROXIMATELY 2,865 FEET NORTH AND 765 FEET WEST OF THE NE CORNER OF SECTION 1, T.26N., R.52E., M.D.B.M.



LOCATION DATES:
 11/05/00 - Phoenix 475, 477-489
 11/06/00 - Phoenix 490-497
 11/07/00 - Phoenix 476, 498-507

TYPICAL CLAIMS

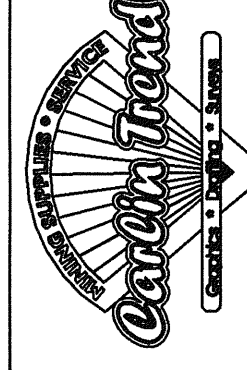
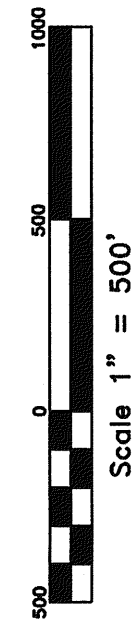


TIE POINT DATA:
 SE CORNER OF PHOENIX 462 IS LOCATED APPROXIMATELY 290 FEET SOUTH AND 765 FEET EAST OF THE SE CORNER OF SECTION 1, T.26N., R.52E., M.D.B.M.

NOTES:
 LOCATION MONUMENTS SET 10' FROM CLAIM END CENTERLINES UNLESS OTHERWISE INDICATED. (SEE LIST BELOW.) ALL LOCATION MONUMENTS AND CLAIM POSTS ARE 2"x2"x4' WOODEN STAKES.

DASHED SECTION LINES INDICATE PROJECTED SECTIONS.

Location Monuments Offset 20 Feet: 480, 483
 Location Monuments Offset 40 Feet: 486, 490, 492, 496



Golden Gryphon USA Inc.
 1400 Tanger Place RR21, Roberts Creek, BC V0N 2W1
 Phoenix Claims
 T26.27N R52.53E; Eureka County, Nevada

FILED AT THE REQUEST OF *Golden Gryphon USA Inc.*
 on *22* *11* at *3:56* *pm*, year *2007*
 RECORDS OF EUREKA COUNTY, NEVADA IN N. RESUBMIT RECORDER
 File No. **175827** Fee \$ *2.00*
Amended Map

Concedo # 175788

3170 SILVER STREET
 PH: (775) 778-0668 ELKO, NV, 89801 FAX: (775) 778-0687

DATE: December 2007
 DRAWN BY: [Signature]
 CHECKED BY: [Signature]
 PLOT SCALE: 1" = 500'