

BOUNDARY LINE ADJUSTMENT RECORD OF SURVEY
NEWMONT MINING CORPORATION & EUREKA COUNTY, NEVADA
 IN SECTION 25, T.33 N., R.48 E., M.D.B. & M. EUREKA COUNTY, NEVADA
 HIGH DESERT ENGINEERING
 640 IDAHO STREET
 ELKO, NEVADA 89801
 (775) 738-4053

SCALE: 1"=400'
 0 400 800 1200 1600

RECORDER'S CERTIFICATE
 FILE NO. 176386
 DATE 3/23/2001
 TIME 3:15 P.M.
 M.N. Rebalca
 EUREKA COUNTY RECORDER
 M.N. Rebalca
 EUREKA COUNTY RECORDER

OWNERS CERTIFICATE
 KNOWN OF ALL MEN BY THESE PRESENTS THAT, NEWMONT MINING CORPORATION AND EUREKA COUNTY, NEVADA, BEING THE OWNERS OF THOSE PARCELS AFFECTED BY THE ADJUSTMENT OF THE BOUNDARY LINES AS SHOWN ON THIS PLAT, DO HEREBY CERTIFY THAT:

1) THEY HAVE EXAMINED THIS PLAT AND APPROVE AND AUTHORIZE THE RECORDED THEREOF.
 2) THEY AGREE TO EXECUTE THE REQUIRED DOCUMENTS CREATING ANY EASEMENT WHICH IS SHOWN.
 3) THEY AGREE TO EXECUTE THE REQUIRED DOCUMENTS ABANDONING ANY EXISTING EASEMENT, IF NECESSARY, PURSUANT TO THE PROVISIONS OF NRS 278.010 TO 278.030 INCLUSIVE.
 4) ALL PROPERTY TAXES ON THE LAND FOR THIS FISCAL YEAR HAVE BEEN PAID.
 5) ANY LENDER WITH AN IMPOUND ACCOUNT FOR THE PAYMENT OF TAXES HAS BEEN NOTIFIED OF THE ADJUSTMENT OF THE BOUNDARY LINE OR THE TRANSFER OF THE LAND.
 IN WITNESS WHEREOF, THE OWNERS, SET OUR HANDS ON THE DATE SHOWN.

BY: LELAND W. KRUGER, VICE PRESIDENT
 DATE: March 5, 2001

BY: PETE GOICOECHEA, CHAIRMAN, EUREKA COUNTY COMMISSIONERS
 DATE: March 5, 2001

THIS INSTRUMENT WAS ACKNOWLEDGED BEFORE ME ON THE 5 DAY OF MARCH, 2001, BY LELAND W. KRUGER, VICE PRESIDENT OF NEWMONT MINING CORPORATION.

NOTARY PUBLIC
 MY COMMISSION EXPIRES: 12/31/2001

THIS INSTRUMENT WAS ACKNOWLEDGED BEFORE ME ON THE 5 DAY OF MARCH, 2001, BY PETE GOICOECHEA, CHAIRMAN, EUREKA COUNTY COMMISSIONERS.

AT A REGULAR MEETING OF THE EUREKA COUNTY COMMISSIONERS HELD ON REGULARLY APPROVED PURSUANT TO N.R.S. 278.0693 AND 025.340 INCLUSIVE.

CHAIWMAN, EUREKA COUNTY COMMISSIONERS
 EUREKA COUNTY CLERK

COUNTY TREASURER'S CERTIFICATE
 THIS IS TO CERTIFY THAT PARCEL NO. 004-400-04 AND 004-220-11 HAS NO DELINQUENCIES AND THAT TAXES ARE PAID THROUGH 6-30-01
 DATE: March 6, 2001

EUREKA COUNTY TREASURER

COUNTY COMMISSIONER'S APPROVAL

STATE OF NEVADA
 COUNTY OF EUREKA

NOTARY PUBLIC
 MY COMMISSION EXPIRES: 12/31/2001

STATE OF NEVADA
 COUNTY OF EUREKA

NOTARY PUBLIC
 MY COMMISSION EXPIRES: 12/31/2001

STATE OF NEVADA
 COUNTY OF EUREKA

NOTARY PUBLIC
 MY COMMISSION EXPIRES: 12/31/2001

STATE OF NEVADA
 COUNTY OF EUREKA

NOTARY PUBLIC
 MY COMMISSION EXPIRES: 12/31/2001

STATE OF NEVADA
 COUNTY OF EUREKA

NOTARY PUBLIC
 MY COMMISSION EXPIRES: 12/31/2001

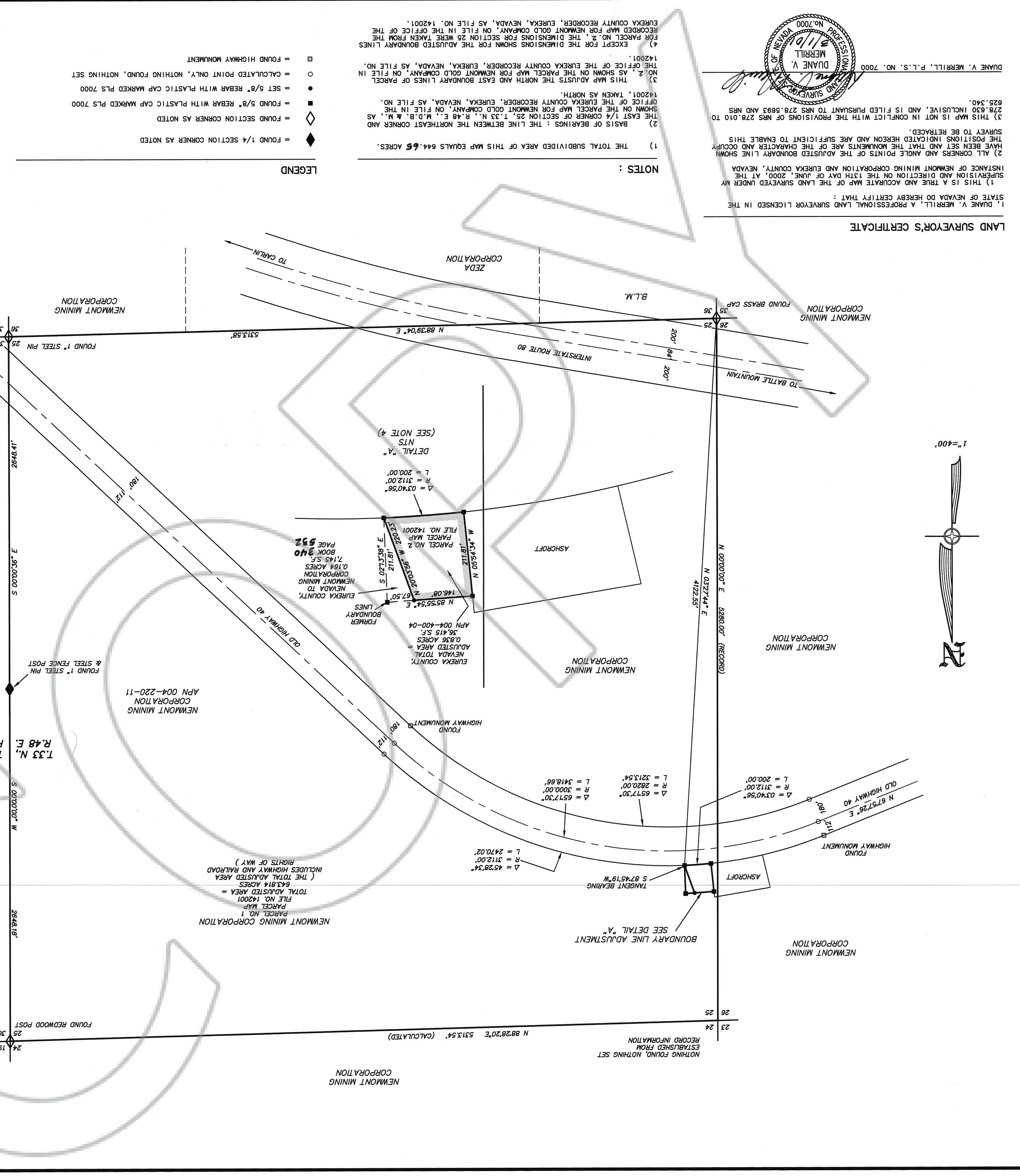
STATE OF NEVADA
 COUNTY OF EUREKA

NOTARY PUBLIC
 MY COMMISSION EXPIRES: 12/31/2001

STATE OF NEVADA
 COUNTY OF EUREKA

NOTARY PUBLIC
 MY COMMISSION EXPIRES: 12/31/2001

STATE OF NEVADA
 COUNTY OF EUREKA



LEGEND
 ◆ = FOUND 1/4 SECTION CORNER AS NOTED
 ◇ = FOUND SECTION CORNER AS NOTED
 ● = SET 5/8" REBAR WITH PLASTIC CAP MARKED PLS 7000
 ○ = CALCULATED POINT ONLY, NOTHING FOUND, NOTHING SET
 □ = FOUND HIGHWAY MONUMENT

NOTES
 1) THE TOTAL SUBDIVIDED AREA OF THIS MAP EQUALS 644.65 ACRES.
 2) BASIS OF BEARINGS: THE LINE BETWEEN THE NORTHEAST CORNER AND THE EAST 1/4 CORNER OF SECTION 25, T.33 N., R.48 E., M.D.B. & M., AS SHOWN ON THE PARCEL MAP FOR NEWMONT GOLD COMPANY, ON FILE IN THE OFFICE OF THE EUREKA COUNTY RECORDER, EUREKA, NEVADA, AS FILE NO. 142001, TAKEN AS NORTH.
 3) THIS MAP ADJUSTS THE NORTH AND EAST BOUNDARY LINES OF PARCEL NO. 2, AS SHOWN ON THE PARCEL MAP FOR NEWMONT GOLD COMPANY, ON FILE IN THE OFFICE OF THE EUREKA COUNTY RECORDER, EUREKA, NEVADA, AS FILE NO. 142001.
 4) EXCEPT FOR THE DIMENSIONS SHOWN FOR THE ADJUSTED BOUNDARY LINES FOR PARCEL NO. 2, THE DIMENSIONS FOR SECTION 25 WERE TAKEN FROM THE RECORDED MAP FOR NEWMONT GOLD COMPANY, ON FILE IN THE OFFICE OF THE EUREKA COUNTY RECORDER, EUREKA, NEVADA, AS FILE NO. 142001.

LAND SURVEYOR'S CERTIFICATE
 I, DUANE V. MERRILL, A PROFESSIONAL LAND SURVEYOR LICENSED IN THE STATE OF NEVADA DO HEREBY CERTIFY THAT:
 1) THIS IS A TRUE AND ACCURATE MAP OF THE LAND SURVEYED UNDER MY SUPERVISION AND DIRECTION ON THE 13TH DAY OF JUNE, 2000, AT THE INSTANCE OF NEWMONT MINING CORPORATION AND EUREKA COUNTY, NEVADA.
 2) ALL CORNERS AND ANGLE POINTS OF THE ADJUSTED BOUNDARY LINE SHOWN ON THE MAP WERE SET AND THAT THE MONUMENTS ARE OF THE CHARACTER AND OCCUR AT THE POSITIONS INDICATED HEREON AND ARE SUFFICIENT TO ENABLE THIS SURVEY TO BE RETRACED.
 3) THIS MAP IS NOT IN CONFLICT WITH THE PROVISIONS OF NRS 278.010 TO 278.030 INCLUSIVE, AND IS FILED PURSUANT TO NRS 278.0693 AND NRS 025.340.
 DUANE V. MERRILL, P.L.S. NO. 7000
 MERRILL
 LAND SURVEYOR
 NO. 7000
 STATE OF NEVADA

OWNERS CERTIFICATE
 KNOWN OF ALL MEN BY THESE PRESENTS THAT, NEWMONT MINING CORPORATION AND EUREKA COUNTY, NEVADA, BEING THE OWNERS OF THOSE PARCELS AFFECTED BY THE ADJUSTMENT OF THE BOUNDARY LINES AS SHOWN ON THIS PLAT, DO HEREBY CERTIFY THAT:

1) THEY HAVE EXAMINED THIS PLAT AND APPROVE AND AUTHORIZE THE RECORDED THEREOF.
 2) THEY AGREE TO EXECUTE THE REQUIRED DOCUMENTS CREATING ANY EASEMENT WHICH IS SHOWN.
 3) THEY AGREE TO EXECUTE THE REQUIRED DOCUMENTS ABANDONING ANY EXISTING EASEMENT, IF NECESSARY, PURSUANT TO THE PROVISIONS OF NRS 278.010 TO 278.030 INCLUSIVE.
 4) ALL PROPERTY TAXES ON THE LAND FOR THIS FISCAL YEAR HAVE BEEN PAID.
 5) ANY LENDER WITH AN IMPOUND ACCOUNT FOR THE PAYMENT OF TAXES HAS BEEN NOTIFIED OF THE ADJUSTMENT OF THE BOUNDARY LINE OR THE TRANSFER OF THE LAND.
 IN WITNESS WHEREOF, THE OWNERS, SET OUR HANDS ON THE DATE SHOWN.

BY: LELAND W. KRUGER, VICE PRESIDENT
 DATE: March 5, 2001

BY: PETE GOICOECHEA, CHAIRMAN, EUREKA COUNTY COMMISSIONERS
 DATE: March 5, 2001

THIS INSTRUMENT WAS ACKNOWLEDGED BEFORE ME ON THE 5 DAY OF MARCH, 2001, BY LELAND W. KRUGER, VICE PRESIDENT OF NEWMONT MINING CORPORATION.

NOTARY PUBLIC
 MY COMMISSION EXPIRES: 12/31/2001

STATE OF NEVADA
 COUNTY OF EUREKA

NOTARY PUBLIC
 MY COMMISSION EXPIRES: 12/31/2001

STATE OF NEVADA
 COUNTY OF EUREKA

NOTARY PUBLIC
 MY COMMISSION EXPIRES: 12/31/2001

STATE OF NEVADA
 COUNTY OF EUREKA

NOTARY PUBLIC
 MY COMMISSION EXPIRES: 12/31/2001

STATE OF NEVADA
 COUNTY OF EUREKA

NOTARY PUBLIC
 MY COMMISSION EXPIRES: 12/31/2001

STATE OF NEVADA
 COUNTY OF EUREKA

NOTARY PUBLIC
 MY COMMISSION EXPIRES: 12/31/2001

STATE OF NEVADA
 COUNTY OF EUREKA

NOTARY PUBLIC
 MY COMMISSION EXPIRES: 12/31/2001

STATE OF NEVADA
 COUNTY OF EUREKA

NOTARY PUBLIC
 MY COMMISSION EXPIRES: 12/31/2001

STATE OF NEVADA
 COUNTY OF EUREKA

NOTARY PUBLIC
 MY COMMISSION EXPIRES: 12/31/2001

STATE OF NEVADA
 COUNTY OF EUREKA

NOTARY PUBLIC
 MY COMMISSION EXPIRES: 12/31/2001

STATE OF NEVADA
 COUNTY OF EUREKA

LAND SURVEYOR'S CERTIFICATE
 I, DUANE V. MERRILL, A PROFESSIONAL LAND SURVEYOR LICENSED IN THE STATE OF NEVADA DO HEREBY CERTIFY THAT:
 1) THIS IS A TRUE AND ACCURATE MAP OF THE LAND SURVEYED UNDER MY SUPERVISION AND DIRECTION ON THE 13TH DAY OF JUNE, 2000, AT THE INSTANCE OF NEWMONT MINING CORPORATION AND EUREKA COUNTY, NEVADA.
 2) ALL CORNERS AND ANGLE POINTS OF THE ADJUSTED BOUNDARY LINE SHOWN ON THE MAP WERE SET AND THAT THE MONUMENTS ARE OF THE CHARACTER AND OCCUR AT THE POSITIONS INDICATED HEREON AND ARE SUFFICIENT TO ENABLE THIS SURVEY TO BE RETRACED.
 3) THIS MAP IS NOT IN CONFLICT WITH THE PROVISIONS OF NRS 278.010 TO 278.030 INCLUSIVE, AND IS FILED PURSUANT TO NRS 278.0693 AND NRS 025.340.
 DUANE V. MERRILL, P.L.S. NO. 7000
 MERRILL
 LAND SURVEYOR
 NO. 7000
 STATE OF NEVADA

OWNERS CERTIFICATE
 KNOWN OF ALL MEN BY THESE PRESENTS THAT, NEWMONT MINING CORPORATION AND EUREKA COUNTY, NEVADA, BEING THE OWNERS OF THOSE PARCELS AFFECTED BY THE ADJUSTMENT OF THE BOUNDARY LINES AS SHOWN ON THIS PLAT, DO HEREBY CERTIFY THAT:

1) THEY HAVE EXAMINED THIS PLAT AND APPROVE AND AUTHORIZE THE RECORDED THEREOF.
 2) THEY AGREE TO EXECUTE THE REQUIRED DOCUMENTS CREATING ANY EASEMENT WHICH IS SHOWN.
 3) THEY AGREE TO EXECUTE THE REQUIRED DOCUMENTS ABANDONING ANY EXISTING EASEMENT, IF NECESSARY, PURSUANT TO THE PROVISIONS OF NRS 278.010 TO 278.030 INCLUSIVE.
 4) ALL PROPERTY TAXES ON THE LAND FOR THIS FISCAL YEAR HAVE BEEN PAID.
 5) ANY LENDER WITH AN IMPOUND ACCOUNT FOR THE PAYMENT OF TAXES HAS BEEN NOTIFIED OF THE ADJUSTMENT OF THE BOUNDARY LINE OR THE TRANSFER OF THE LAND.
 IN WITNESS WHEREOF, THE OWNERS, SET OUR HANDS ON THE DATE SHOWN.

BY: LELAND W. KRUGER, VICE PRESIDENT
 DATE: March 5, 2001

BY: PETE GOICOECHEA, CHAIRMAN, EUREKA COUNTY COMMISSIONERS
 DATE: March 5, 2001

THIS INSTRUMENT WAS ACKNOWLEDGED BEFORE ME ON THE 5 DAY OF MARCH, 2001, BY LELAND W. KRUGER, VICE PRESIDENT OF NEWMONT MINING CORPORATION.

NOTARY PUBLIC
 MY COMMISSION EXPIRES: 12/31/2001

STATE OF NEVADA
 COUNTY OF EUREKA

NOTARY PUBLIC
 MY COMMISSION EXPIRES: 12/31/2001

STATE OF NEVADA
 COUNTY OF EUREKA

NOTARY PUBLIC
 MY COMMISSION EXPIRES: 12/31/2001

STATE OF NEVADA
 COUNTY OF EUREKA

NOTARY PUBLIC
 MY COMMISSION EXPIRES: 12/31/2001

STATE OF NEVADA
 COUNTY OF EUREKA

NOTARY PUBLIC
 MY COMMISSION EXPIRES: 12/31/2001

STATE OF NEVADA
 COUNTY OF EUREKA

NOTARY PUBLIC
 MY COMMISSION EXPIRES: 12/31/2001

STATE OF NEVADA
 COUNTY OF EUREKA

NOTARY PUBLIC
 MY COMMISSION EXPIRES: 12/31/2001

STATE OF NEVADA
 COUNTY OF EUREKA

NOTARY PUBLIC
 MY COMMISSION EXPIRES: 12/31/2001

STATE OF NEVADA
 COUNTY OF EUREKA

NOTARY PUBLIC
 MY COMMISSION EXPIRES: 12/31/2001

STATE OF NEVADA
 COUNTY OF EUREKA

NOTARY PUBLIC
 MY COMMISSION EXPIRES: 12/31/2001

STATE OF NEVADA
 COUNTY OF EUREKA

NOTARY PUBLIC
 MY COMMISSION EXPIRES: 12/31/2001

STATE OF NEVADA
 COUNTY OF EUREKA

DRAWING NUMBER
 176386
 1331 R48E, Sec 25
 Neumont Mining
 NEW HOPES, MINNESOTA
 SAFCO PRODUCTS
 REORDER BY PART NUMBER 001

DRAWING NUMBER
 176386
 1331 R48E, Sec 25
 Neumont Mining
 NEW HOPES, MINNESOTA
 SAFCO PRODUCTS
 REORDER BY PART NUMBER 001

DRAWING NUMBER
 176386
 1331 R48E, Sec 25
 Neumont Mining
 NEW HOPES, MINNESOTA
 SAFCO PRODUCTS
 REORDER BY PART NUMBER 001

DRAWING NUMBER
 176386
 1331 R48E, Sec 25
 Neumont Mining
 NEW HOPES, MINNESOTA
 SAFCO PRODUCTS
 REORDER BY PART NUMBER 001

DRAWING NUMBER
 176386
 1331 R48E, Sec 25
 Neumont Mining
 NEW HOPES, MINNESOTA
 SAFCO PRODUCTS
 REORDER BY PART NUMBER 001

DRAWING NUMBER
 176386
 1331 R48E, Sec 25
 Neumont Mining
 NEW HOPES, MINNESOTA
 SAFCO PRODUCTS
 REORDER BY PART NUMBER 001

DRAWING NUMBER
 176386
 1331 R48E, Sec 25
 Neumont Mining
 NEW HOPES, MINNESOTA
 SAFCO PRODUCTS
 REORDER BY PART NUMBER 001